







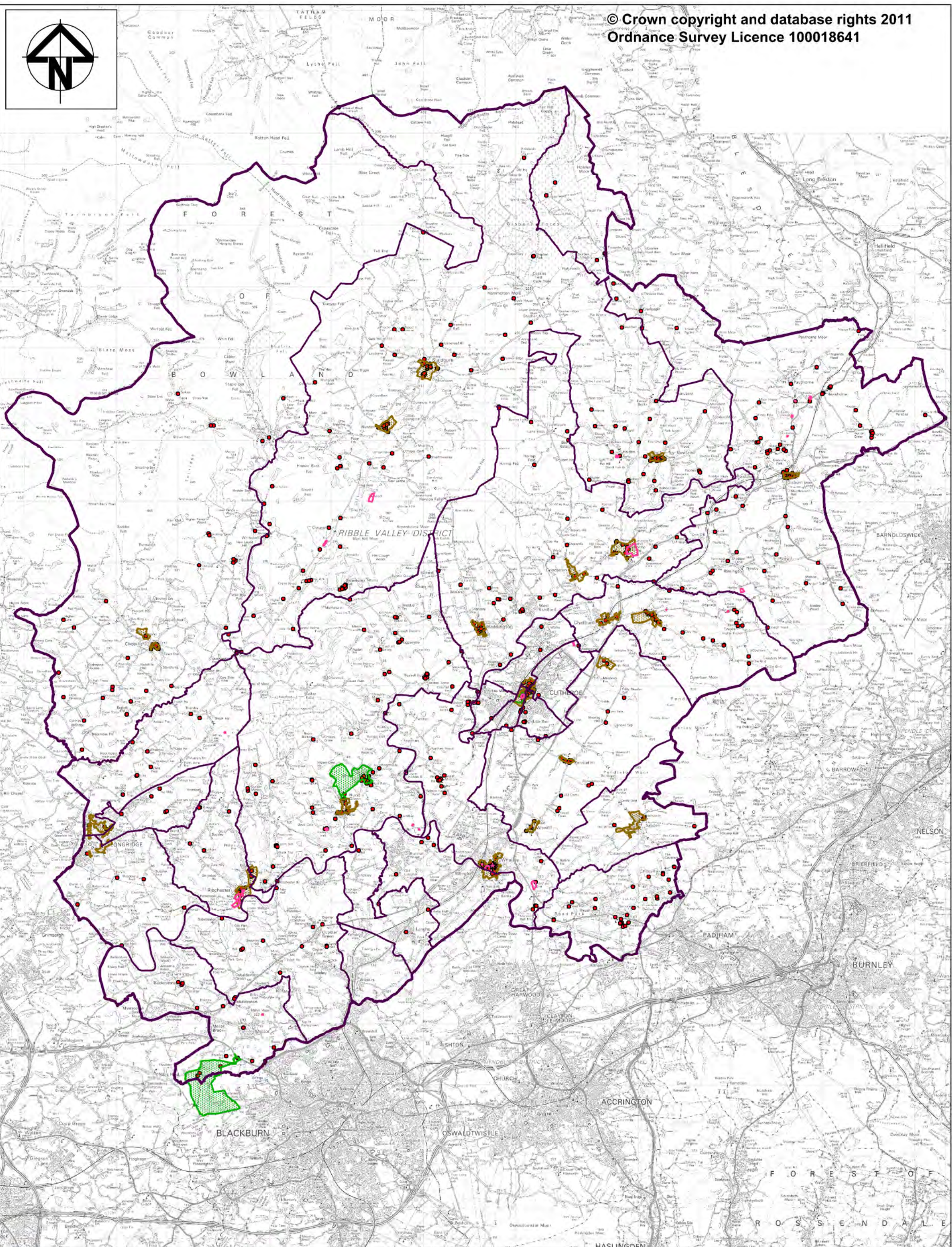
-  Area of Outstanding Natural Beauty
-  Greenbelt
-  Essential Open Space Policy G6
-  National Trails
-  District Boundary
-  Ward Boundaries



Figure 1 Landscape and Open Space







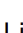




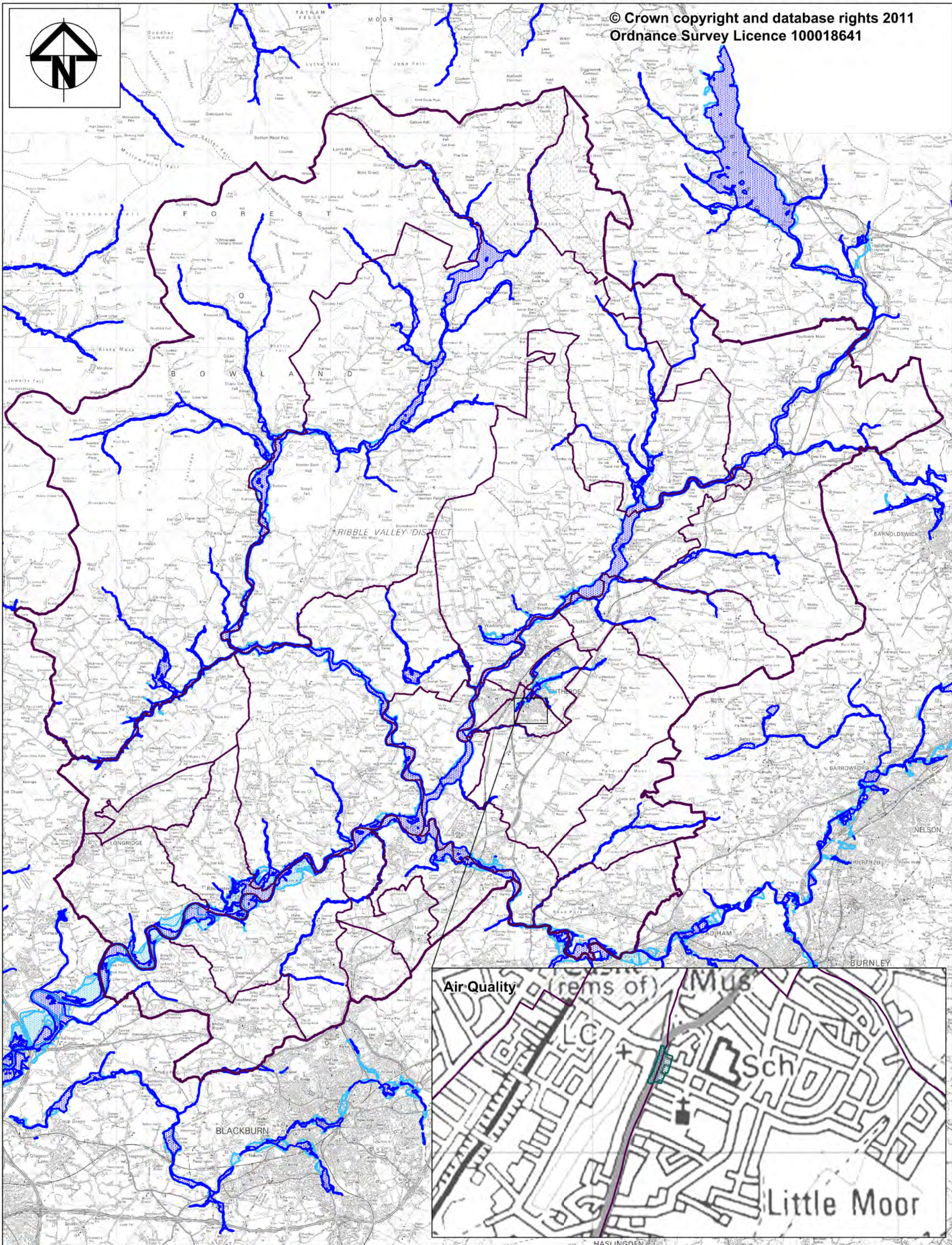
-  Conservation Areas
-  Historic Parks and Gardens
-  Listed Buildings
-  Scheduled Ancient Monuments
-  District Boundary
-  Ward Boundaries



Figure 2 Heritage Assets



Ribble Valley
Borough Council




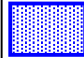



-  Flood Zone 2
-  Flood Zone 3
-  Air Quality Management Area
-  District Boundary
-  Ward Boundaries



Figure 3 Flood Zones and Air Quality



Ribble Valley
Borough Council

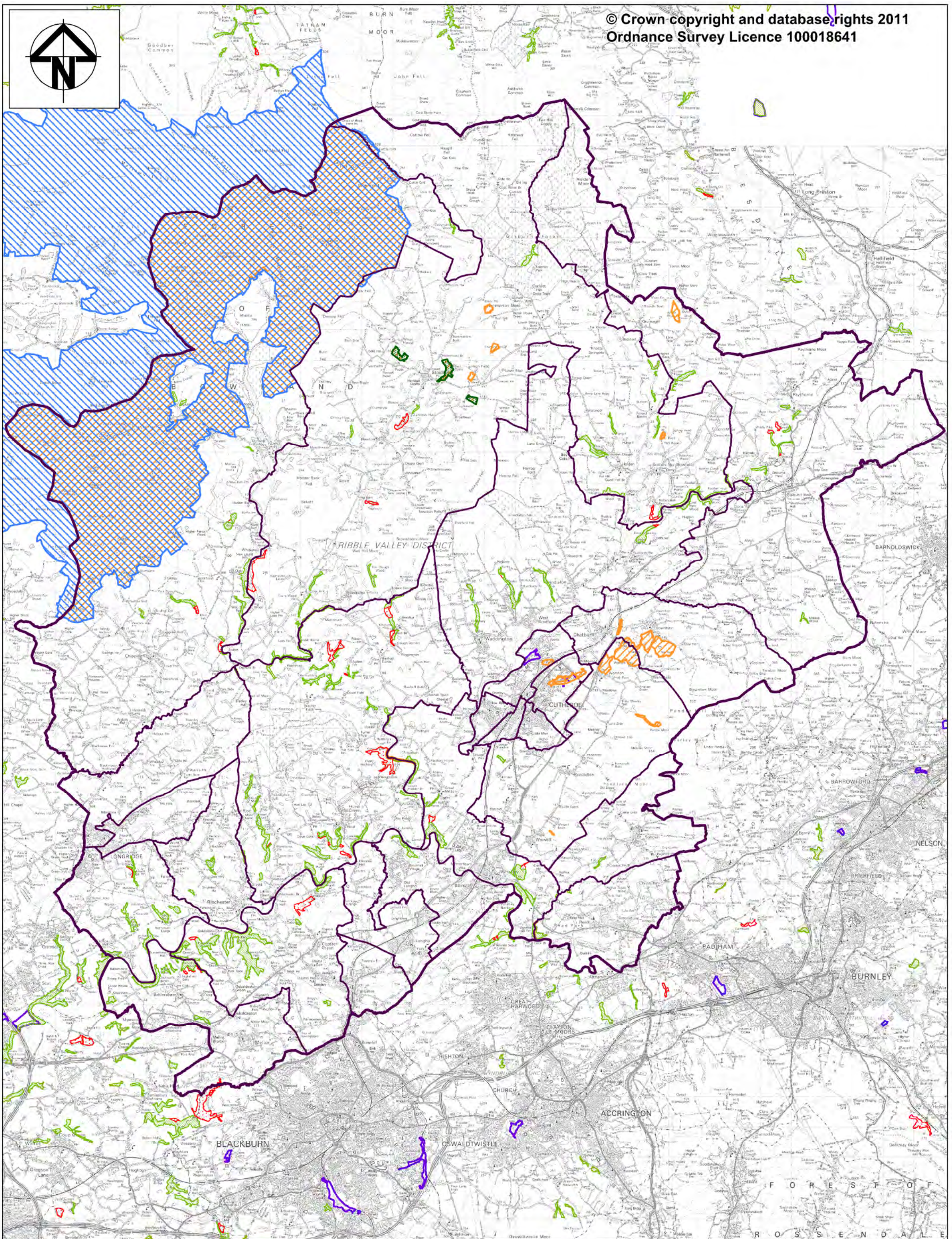
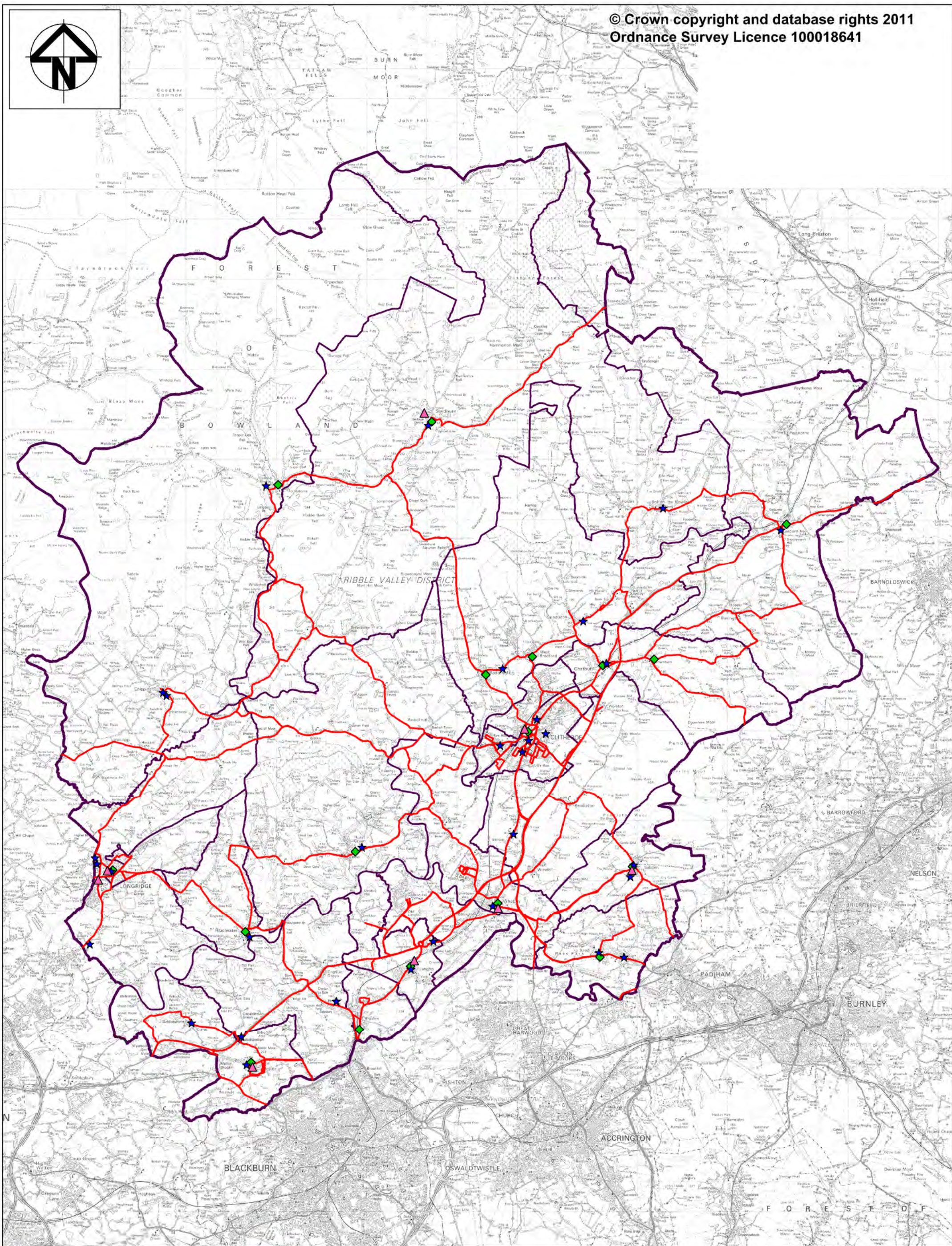


Figure 4 Ecological Assets



Ribble Valley
Borough Council



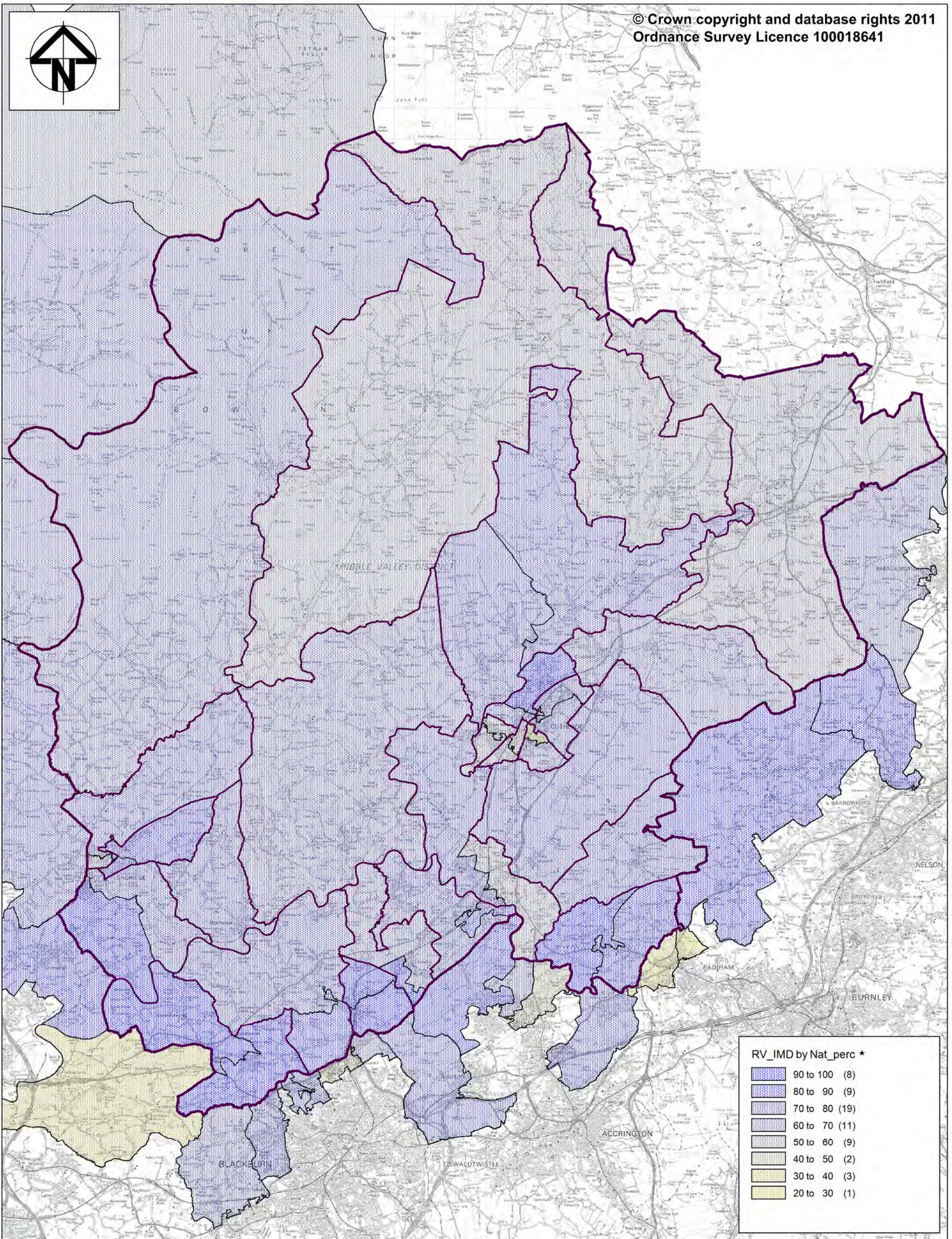
- ★ Primary School
- ◆ Post Office
- Bus Routes (frequencies vary)
- ▲ Doctors Surgeries
- District Boundary
- Ward Boundaries



Figure 5 Location of Basic Services



Ribble Valley
Borough Council



RV_IMD by Nat_perc *

| | |
|-----------|------|
| 90 to 100 | (8) |
| 80 to 90 | (9) |
| 70 to 80 | (19) |
| 60 to 70 | (11) |
| 50 to 60 | (9) |
| 40 to 50 | (2) |
| 30 to 40 | (3) |
| 20 to 30 | (1) |

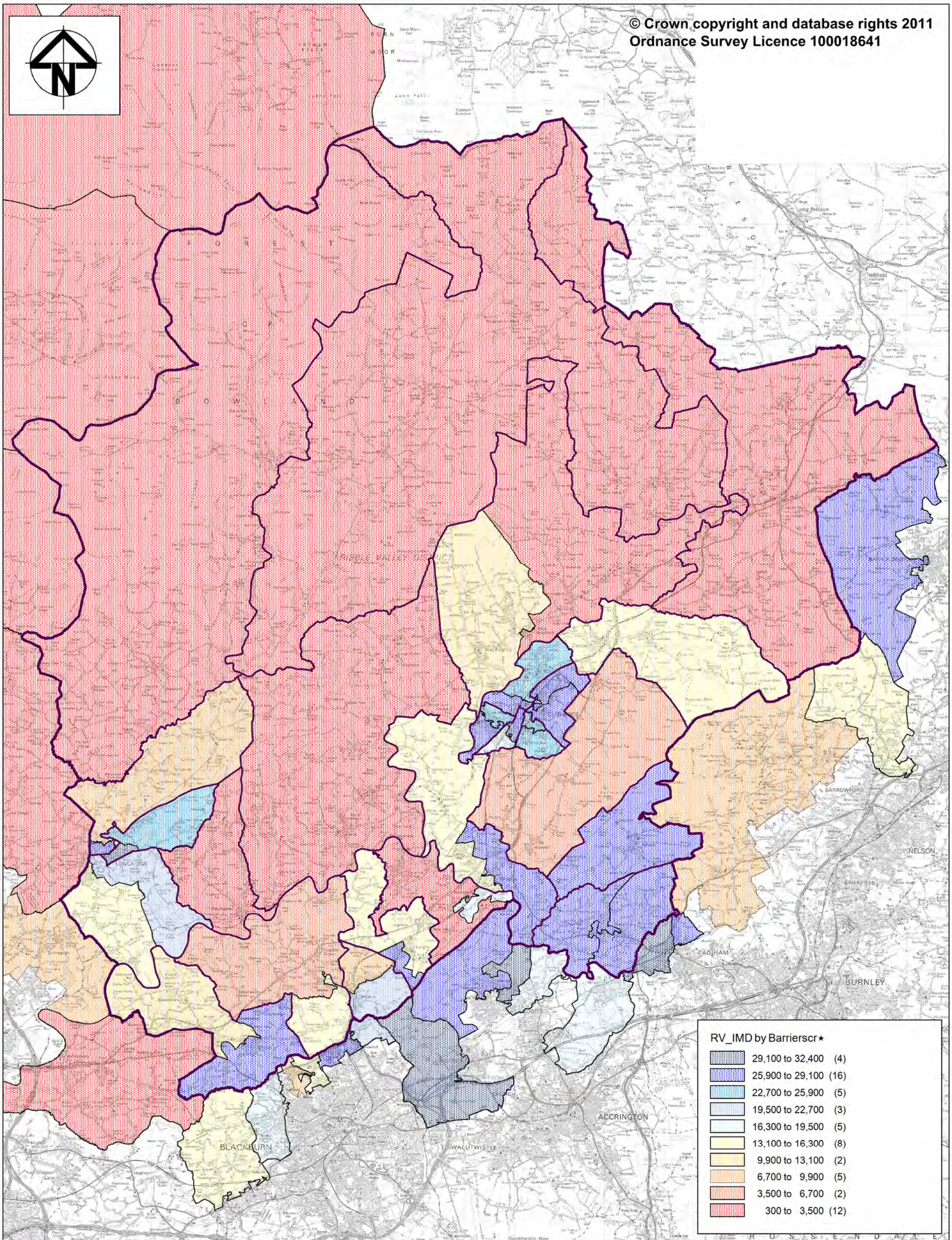
District Boundary
 Ward Boundaries

* Within England there are 32,482 Lower Super Output Areas (LSOA). This key shows the national rank as a percentage of each LSOA within Ribble Valley and immediate surrounding areas. The lower the percentage the higher the level of deprivation.



Figure 6 Index of Multiple Deprivation 2010





RV_IMD by Barrierscr*

| | |
|------------------|------|
| 29,100 to 32,400 | (4) |
| 25,900 to 29,100 | (16) |
| 22,700 to 25,900 | (5) |
| 19,500 to 22,700 | (3) |
| 16,300 to 19,500 | (5) |
| 13,100 to 16,300 | (8) |
| 9,900 to 13,100 | (2) |
| 6,700 to 9,900 | (5) |
| 3,500 to 6,700 | (2) |
| 300 to 3,500 | (12) |

District Boundary
 Ward Boundaries

* Within England there are 32,482 Lower Super Output Areas (LSOA). This key shows the national rank of each LSOA within Ribble Valley and immediate surrounding areas. The lower the rank the higher the level of deprivation.



Figure 7 Barriers to Housing and Services



Ribble Valley
 Borough Council