

**Blackburn with Darwen
Local Plan Part 2**

**Site Allocations
and
Development
Management
Policies**

**Adopted Policies Map
Blackburn Section**

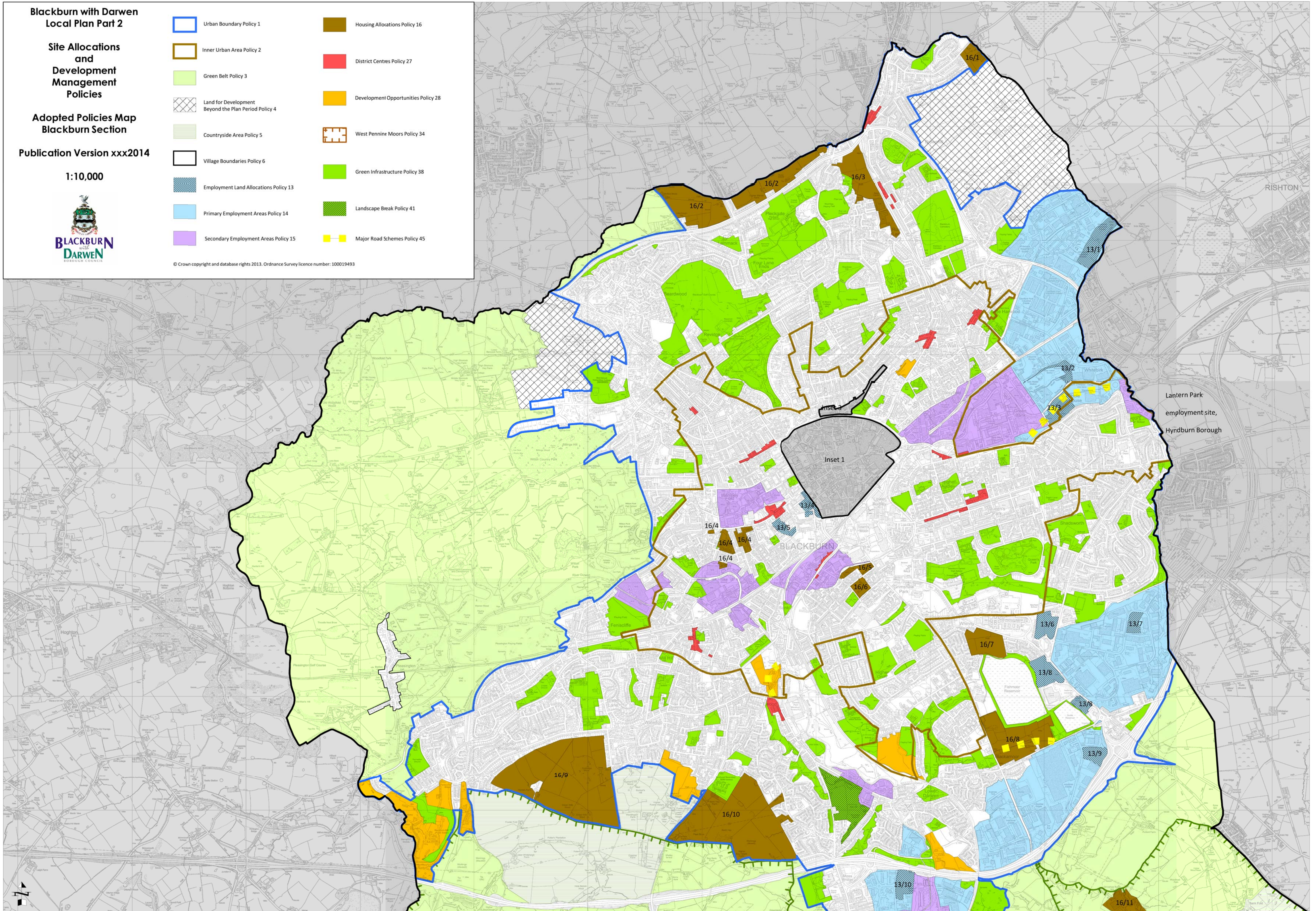
Publication Version xxx2014

1:10,000



- | | | | |
|--|--|--|-------------------------------------|
| | Urban Boundary Policy 1 | | Housing Allocations Policy 16 |
| | Inner Urban Area Policy 2 | | District Centres Policy 27 |
| | Green Belt Policy 3 | | Development Opportunities Policy 28 |
| | Land for Development Beyond the Plan Period Policy 4 | | West Pennine Moors Policy 34 |
| | Countryside Area Policy 5 | | Green Infrastructure Policy 38 |
| | Village Boundaries Policy 6 | | Landscape Break Policy 41 |
| | Employment Land Allocations Policy 13 | | Major Road Schemes Policy 45 |
| | Primary Employment Areas Policy 14 | | |
| | Secondary Employment Areas Policy 15 | | |

© Crown copyright and database rights 2013. Ordnance Survey licence number: 100019493




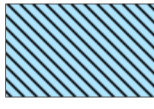






Blackburn with Darwen Local Plan Part 2

Site Allocations and Development Management Policies

Adopted Policies Map Inset 1: Blackburn Town Centre

Publication Version
xxxx2014

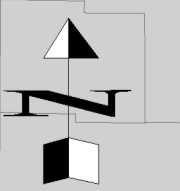
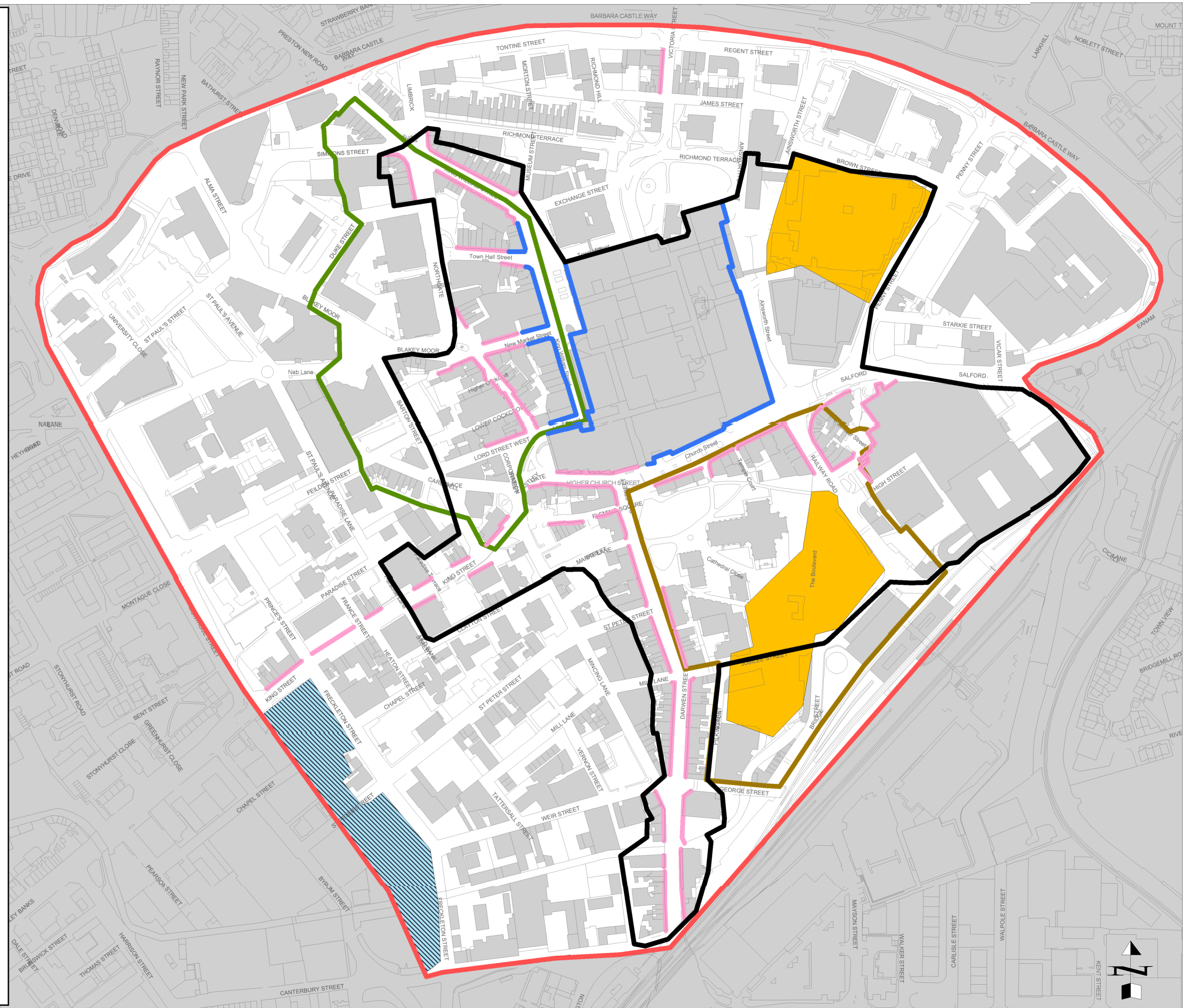
1:2,500

-  Town Centre Boundary Policy 26
-  Employment Land Allocations Policy 13
-  Primary Shopping Area Policy 26
-  Northgate area Policy 26
-  Cathedral Quarter Policy 26
-  Development Opportunity Policy 28
-  Primary Shopping Frontage Policy 31
-  Secondary Shopping Frontage Policy 31



BLACKBURN
with
DARWEN
BOROUGH COUNCIL

© Crown copyright and database rights 2013.
Ordnance Survey licence number: 100019493



**Blackburn with Darwen
Local Plan
Part 2 Site Allocations and
Development Management
Policies**



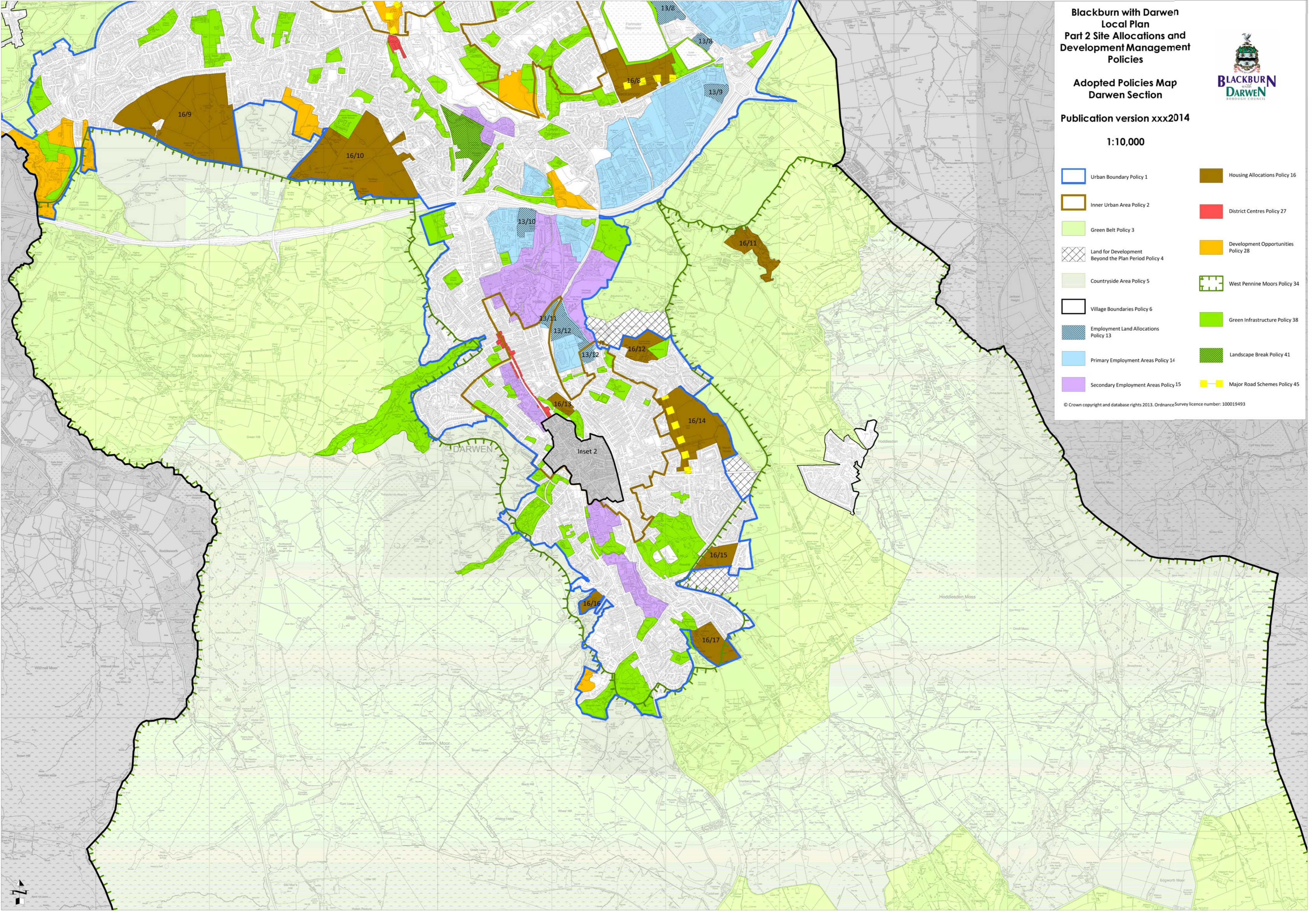
**Adopted Policies Map
Darwen Section**

Publication version xxx2014

1:10,000

- | | |
|--|---|
|  Urban Boundary Policy 1 |  Housing Allocations Policy 16 |
|  Inner Urban Area Policy 2 |  District Centres Policy 27 |
|  Green Belt Policy 3 |  Development Opportunities Policy 28 |
|  Land for Development Beyond the Plan Period Policy 4 |  West Pennine Moors Policy 34 |
|  Countryside Area Policy 5 |  Green Infrastructure Policy 38 |
|  Village Boundaries Policy 6 |  Landscape Break Policy 41 |
|  Employment Land Allocations Policy 13 |  Major Road Schemes Policy 45 |
|  Primary Employment Areas Policy 14 | |
|  Secondary Employment Areas Policy 15 | |

© Crown copyright and database rights 2013. Ordnance Survey licence number: 100019493







Blackburn with Darwen Local Plan Part 2

Site Allocations and Development Management Policies

Adopted Policies Map Inset 2: Darwen Town Centre

Publication Version
xxxx2014

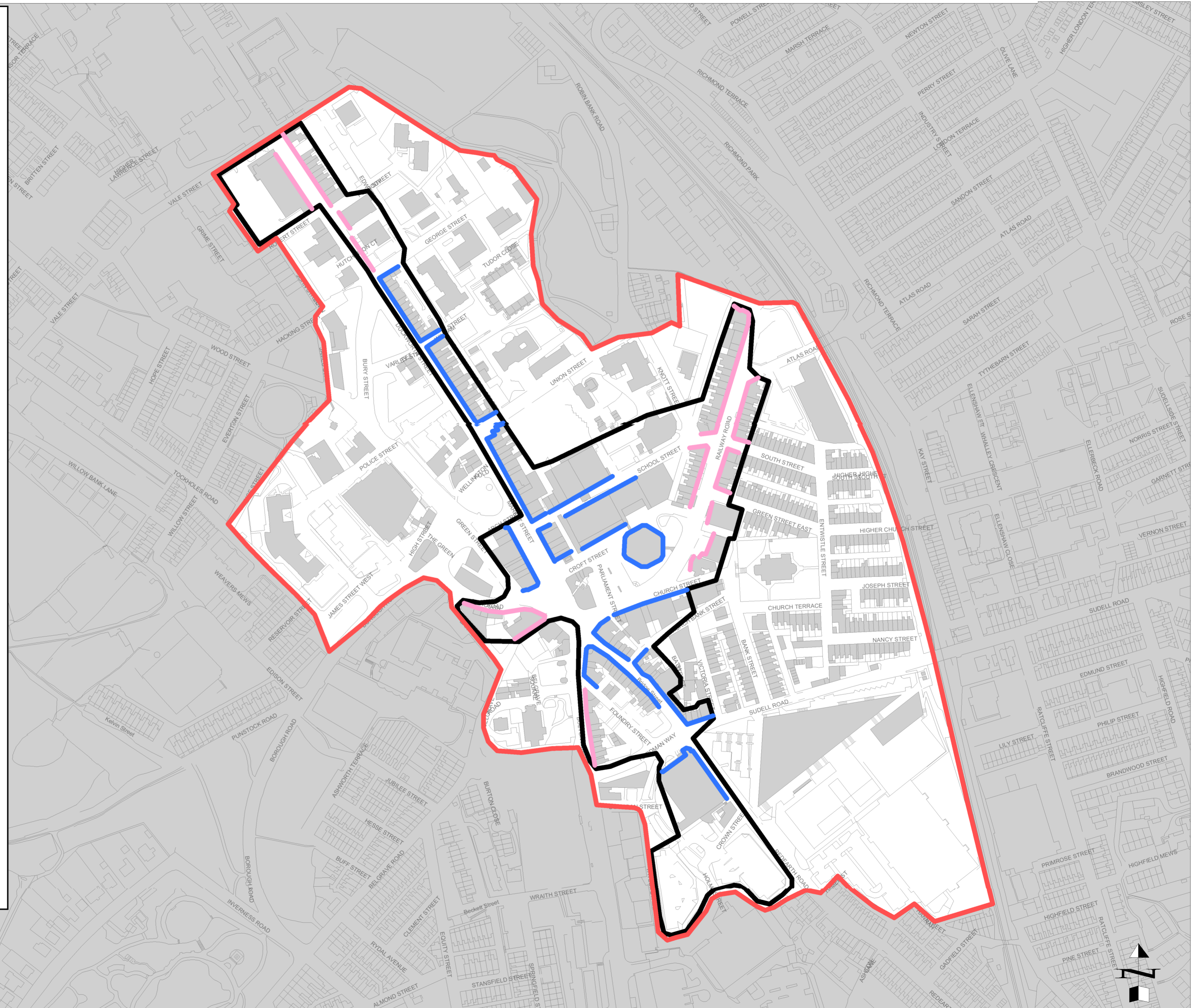
1:2,500

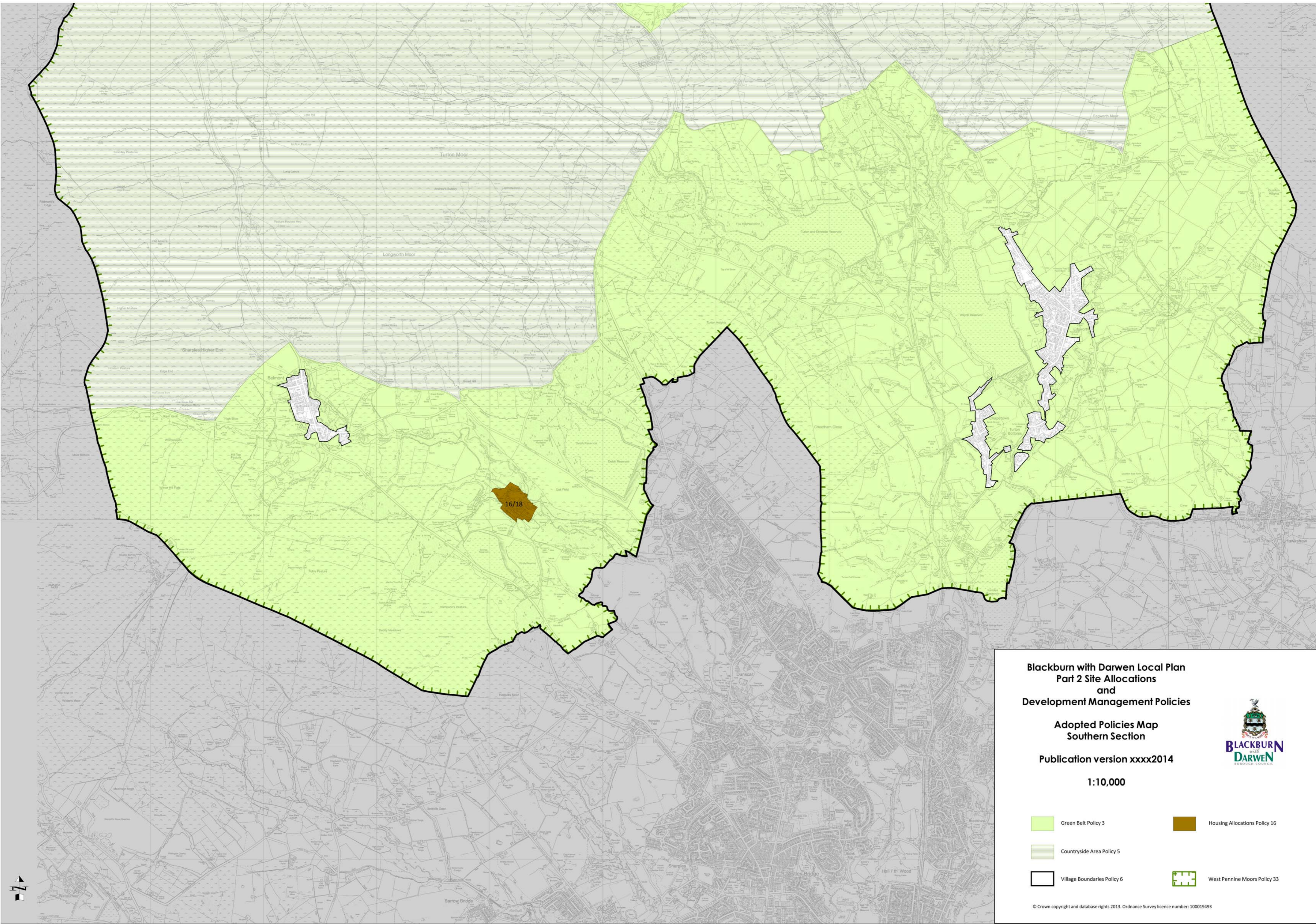
-  Town Centre Boundary Policy 26
-  Primary Shopping Area Policy 26
-  Primary Shopping Frontage Policy 31
-  Secondary Shopping Frontage Policy 31



BLACKBURN
with
DARWEN
BOROUGH COUNCIL

© Crown copyright and database rights 2013.
Ordnance Survey licence number: 100019493







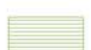

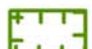
**Blackburn with Darwen Local Plan
Part 2 Site Allocations
and
Development Management Policies**

**Adopted Policies Map
Southern Section**

Publication version xxxx2014

1:10,000



- | | |
|---|---|
|  Green Belt Policy 3 |  Housing Allocations Policy 16 |
|  Countryside Area Policy 5 | |
|  Village Boundaries Policy 6 |  West Pennine Moors Policy 33 |

© Crown copyright and database rights 2013. Ordnance Survey licence number: 100019493






Blackburn with Darwen Local Plan Part 2

Site Allocations and Development Management Policies

Adopted Policies Map Whalley Range Inset

Publication Version
xxxx2014

1:2,500

-  Whalley Range District Centre
Boundary Policy 27
-  Primary Shopping Frontage Policy 27
-  Secondary Shopping Frontage Policy 27



© Crown copyright and database rights 2013.
Ordnance Survey licence number: 100019493

