



East Lancashire

Highways and Transport Masterplan

Consultation Draft

October 2013

Foreword

East Lancashire can be truly proud of the fact that it was one of the power houses of the industrial revolution. 100 years ago, the area was known throughout the world for its manufacturing and engineering excellence. But global trade patterns changed and East Lancashire suffered the consequences. Large numbers of jobs were lost and the area declined.

In the last few years, though, East Lancashire's fortunes have started to turn round. World class manufacturing companies are doing business around the world. Advanced manufacturing, advanced flexible materials, aerospace, digital and creative industries have all become drivers of the resurgent and diverse East Lancashire economy which is so important to Lancashire as a whole.

Transport has always supported East Lancashire's economy. From the opening of the Leeds - Liverpool canal, through the arrival of the railways and on into the motor age, the area has benefitted from modern transport infrastructure. That continues to this day, with an investment of over £130m in improvements already planned for East Lancashire, as set out in this masterplan.

But East Lancashire isn't standing still. Development plans will provide for thousands of jobs to be created in manufacturing. Those jobs will be supported by an expanding retail and service sector, an increasing further and higher education offer and significant new housing development.

Indeed, this opportunity for growth is recognised and supported by the Lancashire Enterprise Partnership's active investment in the area, which builds on key initiatives already being delivered, such as the Lancashire Enterprise Zone to help reclaim Lancashire's role as one of the key centres for advanced manufacturing nationally.

East Lancashire's transport will need to evolve to support this economic growth. This evolution will provide a significant challenge for the area's highways and transport networks. Today the car has become the dominant means of transport and our communities suffer as a result. For many people, public transport has become the last option, rather than being the first choice for everyone, not just those without a car. And cyclists and pedestrians are too often at the mercy of old highways designed around the car. These are the challenges that this draft masterplan meets.

We believe we need to act now to put in place a programme of investment and of further work to make sure that we take every opportunity we can to support East Lancashire's development. This is not something that we can leave to chance; this is something we need to plan carefully to create a real momentum for change.

The delivery of the vision presented in this masterplan will take 10 years or more. It will need public and private money. It will need the backing of partners including the Lancashire Enterprise Partnership through their Growth Deal negotiations, neighbouring authorities, the rail industry and government agencies, as well as the private sector. Choosing which options to pursue will need care and will need a conversation that involves everyone, for this will affect us all, residents or visitors, young and old alike.

The consultation I am launching today is key to the success of East Lancashire in the future. I want to hear as wide a range of opinions as possible so that we can listen to all points of view and look at ideas that are put forward. We need to be sure that there is broad agreement with our vision and what we want to do next. That agreement will give us the confidence to move forward and make East Lancashire's highways and transport networks fit for the 21st century, something that the area can be proud of as it works to regain its economic strength.




County Councillor John Fillis
Cabinet Member for Highways and Transport
Lancashire County Council

Contents

Foreword			
Executive Summary	2		
Introduction ~ Lancashire's Highways and Transport Masterplans	5		
Introduction ~ East Lancashire's Masterplan	6		
East Lancashire Now	7		
East Lancashire Now ~ People and Places	10		
People	10		
Places	11		
East Lancashire Now ~ Transport and Travel	12		
Travel Patterns ~ Longer Distances	12		
Travel within East Lancashire	13		
Looking to the Future ~ Our Priorities	17		
Economic Growth	17		
Health and Well-Being	18		
Sustainability	19		
Looking to the Future ~ Funding	20		
Looking to the Future ~ What are the Challenges?	22		
Our Vision	23		
Taking Our Vision Forward ~ What we're doing now	24		
Current Schemes	25		
TfL Schemes	26		
Other Schemes	26		
Taking Our Vision Further	27		
Taking Our Vision Further ~ Connecting East Lancashire	28		
Rail Connections	28		
Motorway Gateways	29		
Taking Our Vision Further ~ Travel in East Lancashire	31		
Key Corridors	31		
The M65/A56 Corridor	31		
The A59 Corridor	31		
Public Transport	31		
		Taking Our Vision Further ~ Local Travel	33
		Cycling	33
		Local Links	34
		Next Steps	36
		Milestones	37
		Funding	38
		Appendix 1 ~ Programming and Delivery to 2025	40
		Appendix 2 ~ A56 Colne-Foulridge Bypass	42
		Appendix 3 ~ District Maps	46
		Appendix 4 ~ Glossary	51
		Figure 1: LTP Masterplan Areas	5
		Figure 2: The Study Area	7
		Figure 3: People	10
		Figure 4: Places	11
		Figure 5: Longer Distance Journeys	12
		Figure 6: Major Commuting Movements	13
		Figure 7: The Current Network	14
		Figure 8: Our Current Sustainable Transport Network	15
		Figure 9: Traffic Problems Today	16
		Figure 10: Future Plans and Priorities	19
		Figure 11: Current Schemes and Proposals	24
		Figure 12: Connecting East Lancashire	30
		Figure 13: Travel in East Lancashire	32

Executive Summary

This document presents the preliminary Highways and Transport Masterplan for East Lancashire.

The County Council's Local Transport Plan (LTP3) sets out our transport priorities until 2021. It shows our commitment to support Lancashire's economy and to tackle deep-seated inequalities in its people's life chances, bring new life to our communities and provide safe, high-quality neighbourhoods.

We are therefore producing five Highways and Transport Masterplans that reflect the county's economic areas:

- Central Lancashire, covering Preston, South Ribble and Chorley.
- East Lancashire, produced in cooperation with Blackburn with Darwen Council and covering Blackburn with Darwen, Bury, Hyndburn, Pendle, Rossendale and Ribblesdale Valley
- Fylde Coast, produced in cooperation with Blackpool Council and covering Blackpool, Fylde and Wyre
- Lancaster and
- West Lancashire

Once completed, these masterplans will set out a cohesive highways and transport strategy for the whole county, linking economic development, spatial planning and public health priorities to the wider policy objectives of the County Council.

Future decisions about how funding allocations from central government are spent will be the responsibility of the Lancashire Enterprise Partnership (LEP), which covers the local authority areas of Lancashire, Blackburn with Darwen and Blackpool. It is therefore essential that there is one highways and transport strategy for the LEP area, based on approved and adopted strategies and plans. Blackburn with Darwen and Blackpool Councils are therefore cooperating with us to produce this strategy.

The first of these masterplans has now been completed. The Central Lancashire Highways and Transport Masterplan was approved in March 2013 and work is already underway to deliver the transport improvements set out within it.

By their nature, the masterplans need clear and reliable evidence. However, in East Lancashire, that evidence is not all in place. Whilst the economic and public health evidence is robust, not all Local Plans are at the same stage of development across the area. This means that there is no comprehensive set of adopted spatial policies and plans to inform our proposals.

The masterplan presented here therefore sets out our vision for travel and transport in East Lancashire. It seeks a consensus on both the validity of that vision and on some of the options that could be developed to achieve it. The final masterplan for East Lancashire will be developed from this consultation and from new evidence as it becomes available.

East Lancashire Now

East Lancashire is an area of dramatic contrasts, with moors and farmland surrounding historic towns that were once at the forefront of the industrial revolution. However, since its industrial heyday in the 19th and 20th centuries, the area has seen significant economic decline. That decline has left a legacy of social and economic challenges, including deprivation, unemployment and a relatively poor level of skills amongst people in many urban parts of the area.

Manufacturing is still very important for the economy though. East Lancashire has a growing group of higher value industries, with aerospace, advanced manufacturing, advanced flexible materials, digital and creative industries all featuring strongly in the area's economy. These high value industries mean that East Lancashire will play a key role in the success of the Lancashire Advanced Engineering and Manufacturing Enterprise Zone which was launched in April 2012, and in the Arc of Innovation planned by the LEP.

As in much of the county, East Lancashire has an ageing population. The number of people over 75 years has grown and is expected to keep doing so. Life expectancy in East Lancashire has increased but there are wide variations between communities within East Lancashire and between East Lancashire and the rest of the country. These poor health outcomes are linked to the relatively high levels of socio-economic deprivation in some communities caused by the long-term decline in the textile industry.

In transport terms, there is a strong belief locally that East Lancashire is poorly connected, with both road and rail networks making it difficult for people and goods to move around.

Whilst road links to the west and south are reasonable, connections to the east are less so, not least because the M65 motorway finishes abruptly just to the west of Colne. Rail links, on the other hand, are either poor or missing:

- Journey times to Manchester, Leeds and Preston are long and passengers sometimes need to change trains.
- Trains are generally of poor quality.
- Fast, frequent and reliable train services to Manchester Airport are very important, yet there are no direct services from East Lancashire at the moment.
- Rossendale has no mainline rail service of any sort.
- Low passenger numbers for stations on the Colne line show just how poorly Pendle is served by rail.

This sense of isolation and the perception of the area having localised labour markets, narrow travel horizons and limited economic interaction with Manchester, Leeds and Central Lancashire makes East Lancashire's economic development difficult.

Looking to the Future

A key driver for East Lancashire's economic development is the Lancashire Enterprise Partnership (LEP), of which both Lancashire and Blackburn with Darwen councils are members. The Partnership's Lancashire Growth Plan for 2013/14 has been approved and sets out how strong and sustainable economic growth can be achieved in the county.

The partnership is the driving force behind the newly created Lancashire Advanced Engineering and Manufacturing Enterprise Zone that covers the two BAE Systems sites at Samlesbury and Warton. The partnership has 6 further strategic development sites along the M65 corridor.

There are other more local economic and development plans which form part of the spatial background to the development of our highways and public transport networks.

Also, in April 2013, the county council took responsibility for some work that was previously carried out by the NHS. The county council and the NHS will now work together to tackle some of the key issues that affect people's health and wellbeing, helping people to stay healthy and prevent illness.

Funding

The cost of delivering the package of measures identified in the masterplan, and those that will come out of the work we propose to do, cannot be borne entirely by public sector funding. We have shown that, in areas where we can come to rely on the development industry to contribute funding to new infrastructure, we can increase investor confidence and our ability to attract other sources of funding, and in turn improve the prospects of delivery, and delivering to earlier timescales.

Moving forward, investment in major new infrastructure will, increasingly, need to demonstrate an economic justification. In practice, this means a clear strategy towards bringing forward integrated development proposals for new development and economic growth alongside the infrastructure to support it. In order to deliver our proposals, it is vital that local authorities take every opportunity to coordinate their development planning strategies with future infrastructure investment, and pursue and pool together contributions from the development industry.

New procedures have been put in place for collecting and investing developer contributions. Whilst the Community Infrastructure Levy is yet to feature in East Lancashire, it is already proving to be a key mechanism in other parts of Lancashire to delivering major new infrastructure to stimulate and support major house building and business development.

Although market conditions are very different between the Central and East Lancashire, there are areas in East Lancashire that are, or would have the very real prospect to be, attractive areas for developers to build, new residents to live and businesses to locate to and bring jobs.

A number of these areas coincide with transport schemes supported by this masterplan, for example, along the A56 corridor north of Colne to Earby or at Huncoat. In these areas, the prospect for infrastructure delivery will be greatly enhanced in support of new opportunities for development and economic growth and local authorities are encouraged to coordinate future development activity to maximise these opportunities.

The speed and certainty with which we will be able to implement new infrastructure will be directly linked to developer contributions. For this reason it is important that local development frameworks are revisited to bring forward housing sites in locations that have the ability to generate CIL contributions.

Our Vision

Transport is an enabler. In most cases, it doesn't 'do' anything itself but it does allow society to function. Developing our options for East Lancashire's highways and transport networks therefore involves asking a fundamental question; what do we expect these networks to do?

Connections in and out of East Lancashire need to be better, with improved journey times and reliability to both east and west, to Central Lancashire and Yorkshire, and south to Greater Manchester.

Employment and housing development, both strategic and more local, presents a major opportunity for economic development and transformational improvement in East Lancashire. Our networks will need to be able not just to cope with this development in the future but to allow these aspirations to be realised to the benefit of the area as a whole.

The 5 principles that will guide the development of the East Lancashire masterplan are that we will:

- Support the economic development of the county and of East Lancashire specifically
- Work to address deprivation
- Promote community resilience
- Increase healthy behaviour
- Reduce our carbon footprint

Taking Our Vision forward ~ What we're doing now

Whilst we may not have all the information we need to finalise this masterplan, we do know a lot now and we and our partners already have schemes and proposals in place to tackle many of the problems including:

- Todmorden West Curve
- Pennine Reach
- Improvements to Burnley Manchester Road Rail Station
- Rawtenstall Bus Station
- Nelson to Rawtenstall Bus Corridor Study
- Blackburn Town Centre Orbital Route Completion
- Haslingden Road Corridor Improvements

And through Transport for Lancashire (TfL):

- Clitheroe to Manchester Rail Corridor Improvements
- Centenary Way Viaduct Major Maintenance Scheme
- M65 Junction 4 Upgrade
- A56 Colne-Foulridge Bypass

Taking Our Vision Further

The work done so far in the masterplanning process has shown us that, despite the improvements we are already making, there will still be issues to resolve on East Lancashire's highways and transport networks.

These issues fall into a number of themes which provide the basis for the further work that we are presenting in this masterplan. The themes are grouped into 3 strands:

- Connecting East Lancashire
- Travel in East Lancashire and
- Local Travel

Connecting East Lancashire looks at how East Lancashire connects to other areas, particularly to the rest of the county and neighbouring growth areas. We need to make sure that its people, economy and housing markets are more fully integrated to areas of opportunity.

Key to this connectivity will be the rail network. This will need to provide the better connections and standards of service that will support East Lancashire's people and businesses in the future.

The main motorway gateways provided by the M65 and the M66 will also need to be able to cope with the demands placed on them.

What we will do next:

- To look at possible solutions to these issues in depth, we are going to commission a Rail Connectivity Study. This will focus in particular on the importance of improving connectivity between East Lancashire and the growth areas of Preston and Central Lancashire, Manchester (including Manchester Airport) and Leeds.
- We will build on the work done so far and produce an A56/M66 Haslingden/Rawtenstall to Manchester Gateway Study. This will look at the A56/M66 corridor and how congestion can be reduced and the reliability of bus services improved. Most importantly, it will not be restricted to the roads that Lancashire County Council is responsible for, but will extend to roads maintained by the Highways Agency (HA).
- To find out what else we can do to make sure that the M65 gateway works well, we will produce a Samlesbury/Cuerden/Whitebirk Growth Triangle Study that will include the main routes between these 3 key economic growth locations.

Travel in East Lancashire is about the links between East Lancashire's towns and the major employment and housing locations. Economically, these are the connections that make sure that most people and businesses can link into the wider highways and transport networks.

Congestion on key corridors has significant impacts on travel of all kinds, but particularly on travel to work, on businesses and on public transport. We therefore need to ensure that the key corridors can cope with the traffic that wants to use them.

As well as improving public transport reliability, we also need to do what we can to enhance public transport connectivity within East Lancashire to make bus travel an attractive and viable option where possible, particularly for journeys to employment and education.

What we will do next:

- The Burnley/Pendle Growth Corridor Study will look at what needs to be done to make sure that our roads can support the economic growth planned for Burnley and Pendle.
- The Ribble Valley Growth Corridor Study will include the A59 between Samlesbury and North Yorkshire boundary and also the A671/A6068 route between Whalley and M65 Junction 8. The study will look at how these important roads can be made to work as well as possible for cars, freight and for other users.
- The East Lancashire Accessibility Study will focus on travel between the main towns and employment areas, but will also include travel to education and for leisure. This will include how public transport can best serve rural/remote East Lancashire. In line with the way funding will be made available in future, the study will focus on where the greatest benefits can be achieved by improving accessibility.

Local Travel takes up the challenge of making sure that everyone, regardless of their background or where they live, can get to the services and opportunities that they need, from education and employment to leisure and health.

Making our cycling and walking networks attractive is key to this. Part of this is making sure that we look after the highways and transport assets we have already ~ the roads and footways, the lights and signs and all the other things that help our networks function.

But the best road, bus and cycle networks serve no purpose if people can't or don't want to use them. We need to make it easy to change between methods of travel so that whether people are travelling short or long distances, we can reduce dependence on private cars as much as possible for everyone. Making sure that travel to work is cheap and easy also helps the economy.

What we will do next:

- The East Lancashire Strategic Cycle Network will provide 'good' links between towns, employment, education and housing. However, one of the first tasks will be to decide just what a 'good' cycle network is. Different cyclists have very different needs, from enthusiasts with specialist bikes and clothing to people new to cycling with no desire to change clothes and a basic bike.
- Although we know in general terms what we need to do, much of the work of identifying where we need to improve Local Links will come out of work in other areas of this masterplan and from the day to day contacts we have with our partners and our communities.

The 3 strands are closely linked to each other. Easy local travel, by walking and cycling, needs to feed into the bus and rail networks for longer journeys. The bus and rail networks themselves need to connect properly both for journeys in East Lancashire and to the wider area. No matter how far from East Lancashire people and goods are going, the connections to strategic road and rail networks must work to make national and international travel as easy as possible.

Running through all 3 strands is the need for transport to support transformational economic growth across East Lancashire. From the largest to the smallest investment that results from this masterplan, from strategic rail improvement schemes down to local footpaths, East Lancashire's transport networks must be made fit for use in the 21st century.

Next Steps

This consultation masterplan represents the beginning of a programme of infrastructure delivery to serve East Lancashire over the next 13 years and beyond.

There is much to do and it will need the commitment and efforts of a variety of service providers to see it through - County and District Councils, Lancashire's Local Enterprise Partnership, Highways Agency, Network Rail - and the support of private business and house builders as well.

The first task is to make sure we have widespread agreement for the highway and transport improvements that are taken forward. Then, to stand the best chance of delivering these improvements, we must make sure they are 'ready to roll' as soon as we can, so that we can make use of all opportunities to get funding for schemes that are ready to be delivered. That will mean committing time and funding now to working out detailed plans for these ideas and preparing the economic case for them.

Let us know what you think

Until 6th December 2013 there will be a public consultation on the Highways and Transport Masterplan for East Lancashire

As part of the consultation it is important that we get your views on the vision presented in the masterplan

A leaflet with a questionnaire accompanies the masterplan and this is your opportunity to let us know what you think. Copies of the leaflet are available from public libraries and council offices in Burnley, Hyndburn, Pendle, Ribble Valley and Rossendale.

The Masterplan can also be viewed or downloaded from our website. To access the documents paste the following link into your browser www.lancashire.gov.uk and then search for Local Transport Plan on the A-Z list. You can also fill in the questionnaire online.

You can also write to us at:

Highways and Transport Masterplan for East Lancashire
Consultation
Environment Directorate
Room C4
County Hall
Preston
Lancashire
PR1 0LD

or by email: enquiries@lancashire.gov.uk

Introduction ~ Lancashire's Highways and Transport Masterplans

The County Council's third Local Transport Plan (LTP3) sets out our transport priorities until 2021. It establishes our commitment to support Lancashire's economy and to tackle deep-seated inequalities in its people's life chances, revitalising our communities and providing safe, high-quality neighbourhoods.

We will:

- Improve access into areas of economic growth and regeneration
- Provide better access to education and employment
- Improve people's quality of life and wellbeing
- Improve the safety of our streets
- Provide safe, reliable, convenient and affordable transport alternatives to the car
- Maintain our assets and
- Reduce carbon emissions and their effects

As part of this, as the highways and transport authority for Lancashire, we are producing a set of Highways and Transport Masterplans that will cover all 12 districts of the county.

Once completed, these masterplans will set out a cohesive highways and transport strategy for the whole county, linking economic development, spatial planning and public health priorities to the wider policy objectives of the County Council. Each masterplan will:

- Outline current issues affecting our highways and transport networks
- Look at the impact of plans and policies in future years, including the Lancashire Enterprise
- Partnership's Plan for Growth and approved Local Development Framework Core Strategies
- Put forward the measures that the County Council considers are needed to support future growth and development and improve our communities
- Outline funding mechanisms and delivery programmes and associated risks.

Future funding allocations from central government will be devolved to the Lancashire Enterprise Partnership (LEP), which covers the local authority areas of Lancashire, Blackburn with Darwen and Blackpool. It is therefore vital that there is a coherent highways and transport strategy for the whole county, rooted in approved and adopted strategies and plans. Blackburn with Darwen and Blackpool Councils are therefore cooperating with us to produce this strategy. More detail on future funding is provided later in this masterplan.

Rather than produce a masterplan for each district, we have chosen to create five masterplans that reflect the travel areas identified in the Local Transport Plan:

- Central Lancashire, covering Preston, South Ribble and Chorley.
- East Lancashire, produced in cooperation with Blackburn with Darwen Council and covering Blackburn with Darwen, Burnley, Hyndburn, Pendle, Rossendale and Ribble Valley
- Fylde Coast, produced in cooperation with Blackpool Council and covering Blackpool, Fylde and Wyre
- Lancaster and
- West Lancashire

Whilst the majority of districts fall within one area, Ribble Valley is more complex. In travel terms, those ties are principally to central and east Lancashire and it is therefore included in 2 masterplan areas.

The first of these masterplans has now been completed. The Central Lancashire Highways and Transport Masterplan was approved in March 2013 and work is already underway to deliver it.

All five Masterplans will need to integrate to ensure that the whole of Lancashire sees economic and housing growth that will maximise its potential. With the Central Lancashire Masterplan now in place, the other Masterplans need to compliment it, identifying the highways and transport improvements that will be needed to maximise both economic growth across Lancashire and meet the local visions identified in each area.

All the masterplans will require similar evidence, which must be up-to-date and accurate. Local Plans, the planning policies that set out how an area will develop, must be able to provide details of future land use and there must be a sound economic strategy in place. Existing travel and transport must be understood and there must be evidence as to the impact of future development on the highways and transport networks. The health and social needs of the population must also be known.

Whilst all this information was available for Central Lancashire, this is not the case for all the other masterplan areas. In some areas, spatial planning is not as advanced, whilst in others, transport studies need to be completed. However, even without the combined evidence that will allow the publication of a final approved masterplan, we are still in a position to consult on the principles of the strategy and on options that are developing. We can therefore take forward a consensus view on what further work we need to do to finalise the masterplan for each area.

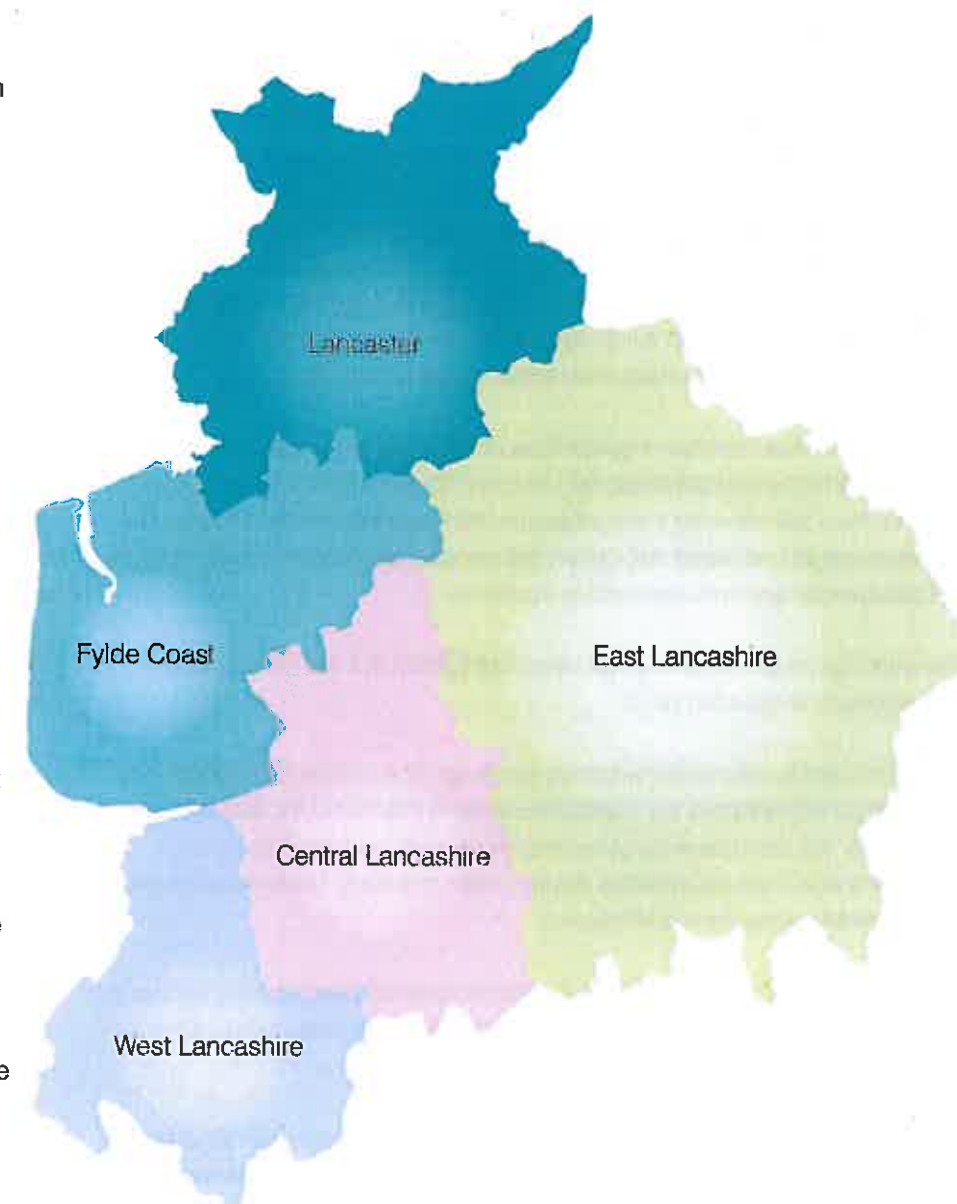


Figure 1: Masterplan Areas

Introduction ~ East Lancashire's Masterplan

This document introduces the preliminary Highways and Transport Masterplan for East Lancashire. Recognising Blackburn with Darwen Council's transport priorities, it sets out options for a future highways and transport strategy for Blackburn with Darwen, Burnley, Hyndburn, Pendle, Ribble Valley and Rossendale to 2026 and beyond.

The fundamental purpose of transport is to enable economic and social activity. It allows people to get to work, to access services and to see friends and visit places. It also allows businesses, suppliers and customers to come together. However, transport also impacts on people, on places, and on our environment. Traffic congestion brings delay and disrupts communities, road accidents cause injury and suffering; vehicle emissions affect local people's health and contribute to global environmental problems and so on.

Balancing the positive and negative impacts of transport is vital in providing sustainable highways and transport networks for the future. However, we can only do this if we consider the consequences that changing these networks will have not just on the users, but on the people, environment and economy of East Lancashire, both now and in the future.

The need for robust evidence has been highlighted but in East Lancashire, that evidence is not all in place.

Economic and public health evidence is robust. The Lancashire Enterprise Partnership has adopted the Lancashire Growth Plan 2013/14 that sets out where they will promote strategic economic growth and the individual authorities also have established development priorities. There is also a wealth of information about health in the area.

However, not all Local Plans are at the same stage of development across the area, which means that there is no set of definitive adopted spatial policies and plans.

Blackburn with Darwen, Hyndburn and Rossendale all have recently adopted Core Strategies, although only Blackburn with Darwen have published more detailed site allocations. Burnley and Pendle adopted their Local Plans in 2006 but are now replacing them and have new emerging Local Plans, whilst Ribble Valley has publicised its Core Strategy.

Whilst we do have evidence of current conditions on the highways and transport networks in East Lancashire, our information about the actual journeys that people make is now old and we are waiting for the release of data from the 2011 Census. We also have transport studies planned and in progress in the area which will provide us with much better evidence as to how transport can best support East Lancashire's economy and people.

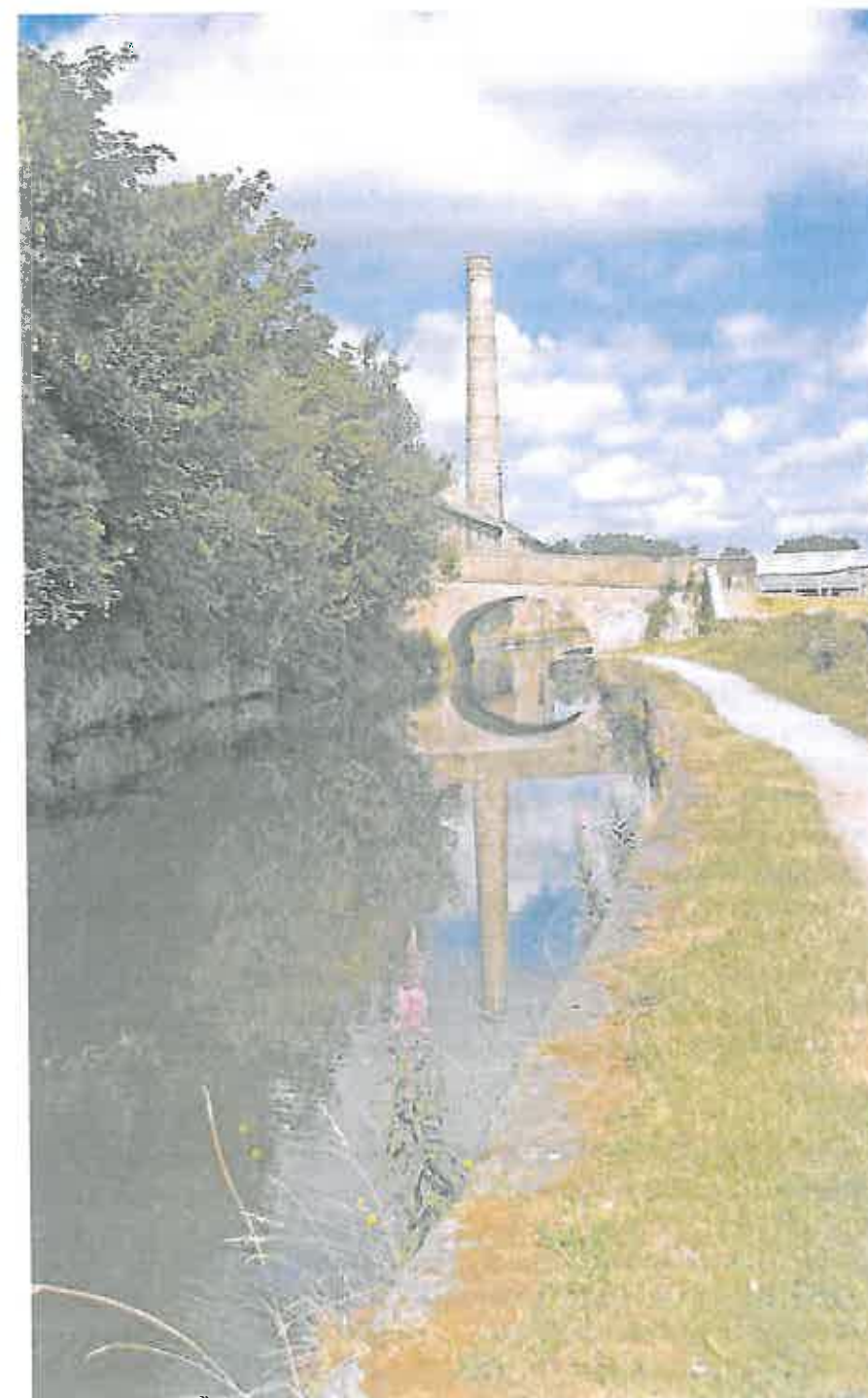
Without total confidence in our information on the current situation, and with adopted Core Strategies in only 3 districts, the masterplan presented does not consult on a programme of infrastructure. Rather, it sets our vision for travel and transport in East Lancashire and seeks agreement on both the validity of that vision and on how we take that vision forward.

This consultation masterplan therefore:

- Describes East Lancashire's people and places as they are now
- Outlines what we know of current transport patterns and identifies issues with the current highways and transport networks that support East Lancashire
- Sets out the current plans and policies that will impact on the area in the future.
- Uses the evidence to establish what challenges our transport networks face
- States our vision for what our highways and transport networks should be able to do by 2026
- Shows what work is already underway to achieve that vision and
- Lastly, sets out how we can intend to the masterplan further.

In consulting on our vision of what East Lancashire's highway, rail, bus, cycling and walking networks need to be able to do and what options we have for fulfilling that vision, we want to involve everyone across the area in the decisions that will affect them. We also want to be sure that we are committing resources in the way that will support economic growth and improve the health and well-being of the people in the area.

The final masterplan for East Lancashire will be developed from this consultation and from new evidence as it becomes available.



East Lancashire Now

East Lancashire, which had a population of 530,500 in 2012, is an area of dramatic contrasts, with moors and farmland surrounding historic towns that were once at the forefront of the industrial revolution. However, since its industrial successes of the 19th and 20th centuries, the area has seen significant economic decline. That decline has left a legacy of social and economic challenges, including deprivation, unemployment and a relatively poor skills base in many urban parts of the area.

Manufacturing still remains a key driver for the economy though. East Lancashire has a growing portfolio of higher value industries with aerospace, advanced manufacturing, advanced flexible materials, digital and creative industries all featuring strongly in the area's economy. These high value industries mean that East Lancashire will play a key role in the success of the Lancashire Advanced Engineering and Manufacturing Enterprise Zone which launched in April 2012 and in the Arc of Innovation planned by the LEP.

The area has economic links to a much wider area however, which have shaped the study area of the masterplan, as Figure 2 shows.

East Lancashire's industrial heritage has given the area a very distinctive character. Whilst the architectural legacy includes heritage townscapes, it also includes the utilitarian terraced housing that is the stereotype of East Lancashire; much of this housing is unfit for purpose and adds to the economic, health and social challenges faced by much of the area, another legacy of the industrial past.



Figure 2: The Study Area

The six areas that make up East Lancashire each have their own character:

Burnley

Although it is a largely rural district, with well off areas that are highly desirable residential locations, the town of Burnley itself has areas with high levels of deprivation. As with many other boroughs in East Lancashire, this is the result of the declining influence of the textile industry. This has resulted in significant social and economic challenges in some parts of the district, including low skill levels, worklessness, poor quality housing and health inequalities.

Burnley is the third most populous borough in East Lancashire. However, in contrast to the rest of the county, Burnley's population has been in long-term decline due to migration out of the district. By 2035 however, it is estimated Burnley's population will show a 3% increase. This is well below the 10% increase forecasted for Lancashire as a whole.



Burnley's economic strengths are mainly in manufacturing, distribution, hotels and retail, public administration, education and health.

Advanced manufacturing is a key sector, with Burnley a nationally significant hub for the aerospace industry. Automotive and construction are also important manufacturing sectors.

The town has similarities to Blackburn. It provides a focus for the most easterly districts of the county. It is a key destination for shopping and employment and is home to Burnley College and to the area's second hospital. Also like Blackburn, the district has seen significant investment, with the LEP committing substantial Growing Places funding to Burnley for the Weaver's Triangle and the Burnley Bridge business park.

Hyndburn

Geographically, Hyndburn is the smallest district in Lancashire covering just 73 square kilometres; it is, however, one of the most densely populated. The principal town is Accrington, which has a particularly rich architectural heritage.

Hyndburn has a small economy which has experienced limited growth over recent years. The area's economic base is rooted in textiles, engineering, chemicals and extractive industries. Manufacturing is one of the area's key strengths with 23% of employees working in the sector.

There are large differences in income levels between the more affluent wards in the rural areas and the least affluent wards within urban centres. In common with some other districts in East Lancashire, Hyndburn has significant issues in some parts of the district including the quality and price of housing, the poor health of many residents, low levels of job creation and areas of severe economic deprivation.



The population is set to grow by only 7% by 2035, which is below the Lancashire average. As a result, the projected growth of household numbers in the authority is below national and county averages.

Pendle

Pendle has the second largest district population in East Lancashire. It has a mix of high quality rural areas, a large part of which are in an Area of Outstanding Natural Beauty (AONB), and dense urban areas centred around the M65 motorway in the towns of Brierfield, Nelson and Colne. Barnoldswick and Earby, in the largely rural north of Pendle, are home to a number of prominent businesses.

As with many districts in East Lancashire, the industrial change the area has undergone has resulted in significant social and economic challenges in some areas, characterised by low skill levels, worklessness, poor quality housing, significant health inequalities and high concentrations of deprivation.

Pendle's population is growing with an expected 11% increase by 2035. There will, therefore, be significant increase in housing provision alongside a need for new jobs.

Pendle has a diverse economy. Manufacturing is a key activity with Pendle having the highest relative share of employee jobs in the manufacturing sector in Great Britain. The aerospace industry is a major strength, supporting high value employment and also the wider economy through supply chains in the area, with Rolls Royce a major aerospace employer. Precision engineering, textiles and furniture are also important.



As well as high value manufacturing, Pendle has a service function and a strong visitor economy based around the Forest of Bowland AONB. It is also a major shopping destination with Boundary Mill and Colne attracting 2.6 million visitors each year from across the region and Yorkshire.

Rossendale

More so than in any other part of East Lancashire, the geography of Rossendale has shaped the district. The steep valleys, cut into the moors by the River Irwell and its tributaries, have resulted in linear urban areas that straddle the main roads along the valley bottoms. The local countryside is rich with wildlife and is an important asset for tourism, attracting ramblers, wildlife enthusiasts and cyclists.

Due to the decline of the textile industry, Rossendale now has a small economy with manufacturing the main industry and strengths in tourism, construction and service sectors. Despite the continued decline in manufacturing employment there has not been a substantial shift in the local economy toward other industries, with the area poorly represented in higher growth sectors, although the area is home to Scout Moor, the largest onshore windpower project in England.

There is a healthy business enterprise base, dominated by small businesses and good self-employment rates, but half the working population commute to jobs outside the borough, earning significantly more than those who do not.

As a result, the standard of housing and levels of deprivation greatly differ from east to west. The west is desirable for commuting due to its good connectivity, resulting in high house prices and low levels of deprivation. The east of Rossendale is less well connected. Consequently, house prices are lower and deprivation is more severe and widespread.

Rossendale's population is growing with an expected 13% increase in inhabitants by 2035. This is above the 10% average increase in Lancashire and is the largest in East Lancashire.



Ribble Valley

Geographically, Ribble Valley is the largest district in Lancashire, although the rural nature of the district means it has the lowest population and population density in the county. Over 70% of the borough is within the Forest of Bowland Area of Outstanding Natural Beauty (AONB). The administrative centre is the attractive market town of Clitheroe.

Ribble Valley has a small mixed economy, with manufacturing, agriculture and tourism the most prominent sectors. Distribution, hotels and restaurants account for a large proportion of employment and many farming businesses have diversified to offer locally produced food and drink, retail, leisure and business facilities and tourism related activities. The district is home to BAe Systems and the Lancashire Advanced Engineering and Manufacturing Zone.



The rural nature of the district and the affluence of many of its residents mean that Ribble Valley has few of the problems of the dense urban areas of East Lancashire. However, the rural setting does mean that geographical isolation is an issue for less well off residents.

The overall population of the district has seen a strong growth for a number of years. Of particular note are the higher proportions in the older age groups, especially in the 45-54 age group. By 2035 the population of Ribble Valley is expected to increase by 9%.

Blackburn with Darwen

Blackburn with Darwen Council, as a unitary authority, is the highways and transport authority for the borough. Because of its geographical position as the gateway between Central Lancashire and much of East Lancashire, the Blackburn with Darwen area is key to this masterplan.

Blackburn with Darwen is by far the most populous area in East Lancashire and has experienced a population increase over recent years. By 2035, the population is forecasted to grow by 10%. As a result, there will need to be a significant increase in housing provision for high quality affordable and 'executive' housing.



Like many boroughs in East Lancashire, Blackburn with Darwen faces numerous social and economic challenges in some parts of the area, including low skill levels, worklessness, poor quality housing and health inequalities.

Sitting close to the West Pennine Moors, Blackburn is the largest town in East Lancashire and provides the focus for the western part of the area. It is a key destination for shopping and employment and is home to Blackburn College, the largest Further Education college in East Lancashire, and also to the area's principal emergency hospital. The town has seen major investment in recent years, with substantial highway improvements and on-going redevelopment including the Cathedral Quarter and the Knowledge Zone

Sitting south of Blackburn is Darwen, the second largest settlement in the borough. Darwen town centre fulfils a market town role providing small scale retail developments and community services. The town retains a strong identity and the surrounding hills and moors, present a striking backdrop.

East Lancashire Now ~ People and Places

People

Like much of the county, East Lancashire has an ageing population. The number of people over 75 years has increased and is projected to continue to do so. However, at the same time, the numbers of children and young people in the area is higher than average. In particular, the south Asian ethnic group, which makes up over 11% of the population across the area, is young with almost a third aged under 15, double the proportion in the rest of the population.

Life expectancy in East Lancashire has improved but there are wide social inequalities within East Lancashire and between East Lancashire and the rest of the country. This is driven by relatively high early death rates from cardiovascular, cancer and respiratory diseases and also by accidents, chronic liver disease, suicides and infant deaths. Mental health issues are also more common in some areas.

These poor health outcomes are linked to the relatively high levels of socio-economic deprivation in some communities caused by the long-term decline in the textiles industry. This deprivation is the result of a combination of factors including low income levels, unemployment, low education levels and poor housing, coupled with community factors such as a lack of community cohesion and higher crime levels.

Across the East Lancashire area;

- Unemployment is an issue in many areas, particularly parts of Blackburn with Darwen, Burnley and Pendle
- Average gross weekly pay of residents is well below the North West average in all districts except Ribble Valley.
- Reflecting this, the number employed in managerial and professional jobs is much lower than the North West average across much of the area.
- Education levels are low across some areas, with parts of Burnley, Blackburn with Darwen, Pendle and Rossendale in particular having below average numbers qualified to NVQ level 2 or above
- Areas in Burnley, Blackburn with Darwen and Hyndburn have high levels of out of work benefit claimants

Where people live determines where many journeys start and end, so the more people in an area, the greater the demand on the network. This is particularly true of commuting, which currently places by far the biggest strain on our transport systems as many workers try to travel in a relatively short period of a few hours in the morning and early evening.

Figure 3 shows how the population of East Lancashire is spread across the area, as recorded in 2011 Census. The largest settlements follow the line of the M65, from Blackburn in the west to Colne in the east. The very linear nature of Rossendale is also clear from the map. Predicted population growth is varied, with very small increases in some districts, but far greater growth in others.

What are not shown on the map are the small settlements that are scattered across the rural areas. These communities have only a very limited impact on overall travel patterns because, individually, the numbers of journeys are small. However, their needs are still an essential consideration for this masterplan.

The neighbouring towns and cities that have a major influence on East Lancashire are also shown. Preston and Central Lancashire are at the heart of Lancashire's economic growth plans. However, Blackburn with Darwen and Rossendale also have strong economic and physical links to Greater Manchester, whilst Pendle and the Ribble Valley have links to Yorkshire.

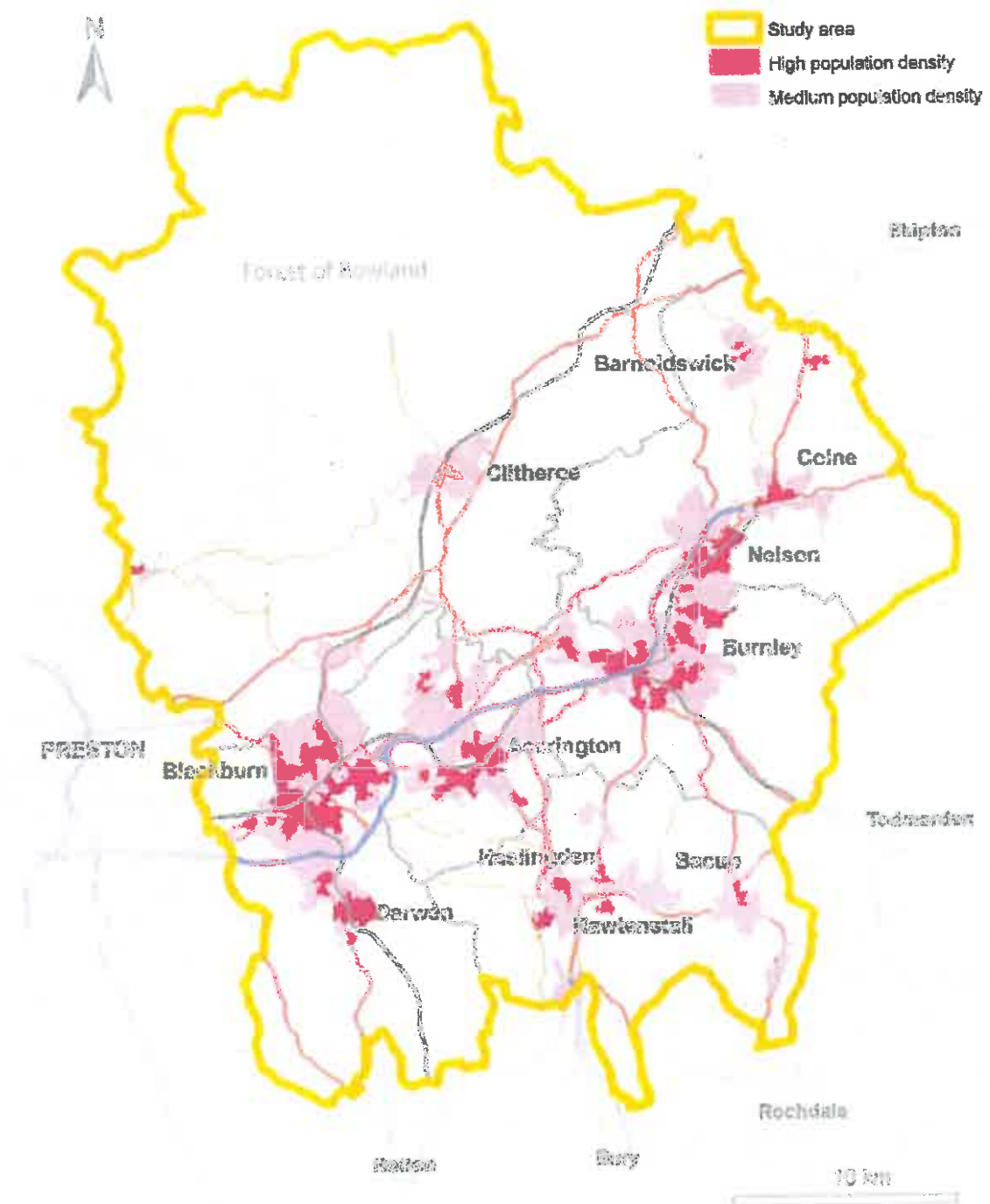


Figure 3: People

Places

The other major influence on travel patterns are the places that people want to travel to.

Whilst our town centres have traditionally been a focus for employment and shopping, out of town locations are now also major destinations for both people and goods. Both Oswaldtwistle and Colne in particular are home to major retail developments that attract visitors from a much wider area.

Large numbers of journeys are also made to the hospitals and education facilities in Blackburn and Burnley, as well as some to facilities in West Yorkshire.

Tourist and sporting destinations can also attract large numbers of journeys. The East Lancashire Railway and the Adrenaline Gateway, both in Rossendale are both significant tourist attractions and both Blackburn and Burnley have football venues that attract fans from across the country.

Large numbers of people also visit the countryside of East Lancashire, in particular the Forest of Bowland AONB and the West and South Pennine Moors, and whilst these journeys are in smaller numbers to smaller destinations, combined they become more significant.

Figure 4 shows the places that are visited by large numbers of people. Together, people and places shape the demand for travel in, to and from East Lancashire. The next section looks at this travel demand and how it affects the highways and transport networks.



© Copyright Peter Standing and licensed for reuse under Creative Commons License.

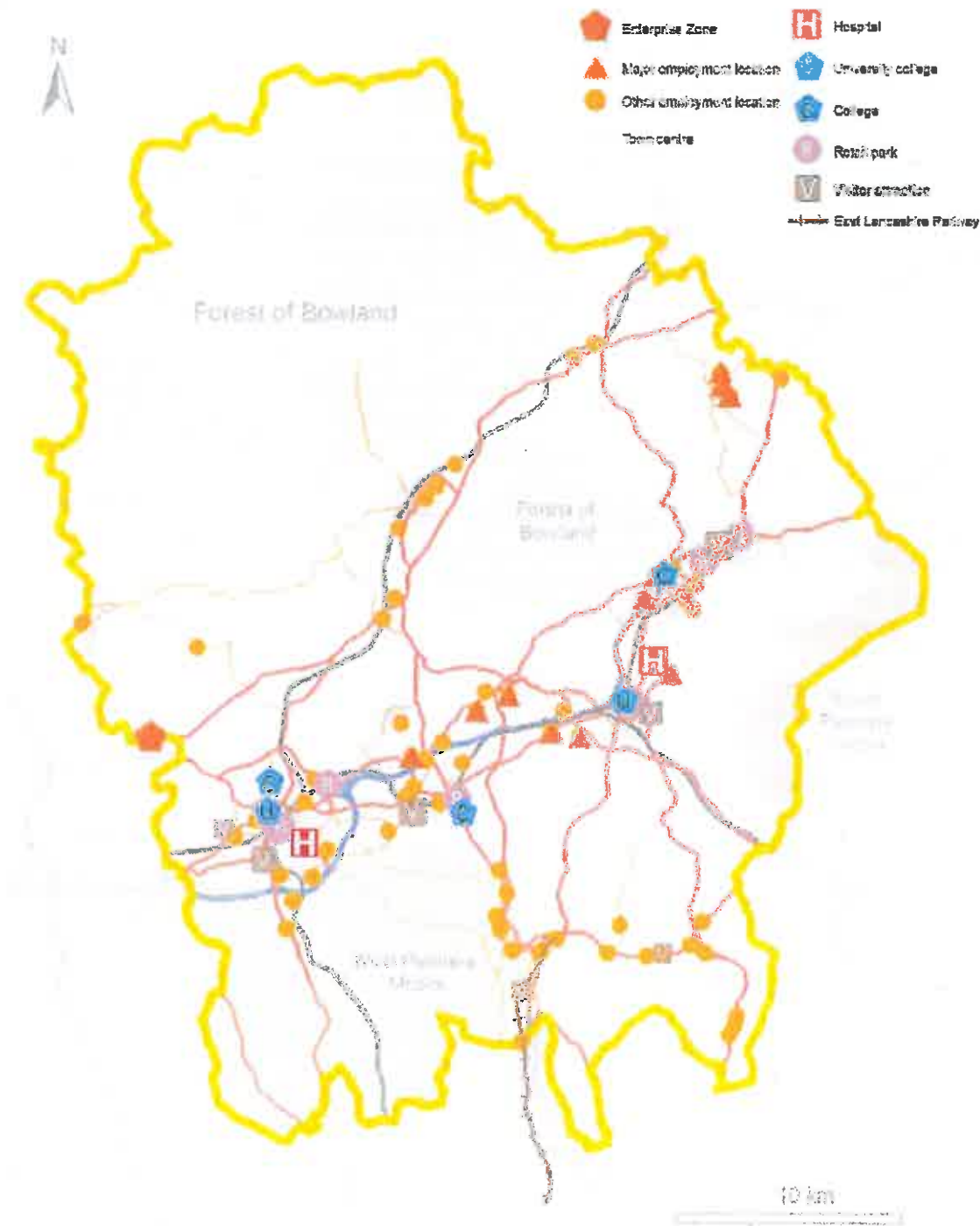


Figure 4: Places

East Lancashire Now ~ Transport and Travel

Travel Patterns ~ Longer Distances

Blackburn and Burnley are the major transport hubs for the East Lancashire area. Both have good connections to the strategic road network and Blackburn provides a gateway to rail services from Preston (West Coast Mainline) and Manchester. Hyndburn also has good road and rail connectivity.

Pendle, at the end of the East Lancashire line, has limited rail services, whilst Rossendale has no mainline rail connection of any sort. Pendle, Burnley and Rossendale do, however, benefit from a frequent high quality bus service to Manchester.

As well as journeys to and from East Lancashire, there are also large numbers of journeys that cross the area, as East Lancashire sits on a main corridor between the North West and Yorkshire and Humberside.

The M65 and A59 provide the principal east-west road links across the area. The M65 has junctions with the M6/M61 in the west, but at its eastern end finishes abruptly just outside Colne, leaving long distance traffic to travel through Colne on its way to and from the motorway.

Links to Manchester are provided by the A56(T) which runs from the M65 to join the M66 at Edenfield.

A cross-Pennine rail service links Preston to Leeds through Blackburn and Burnley. However, there are currently no direct rail services to Manchester other than from Clitheroe and Blackburn.

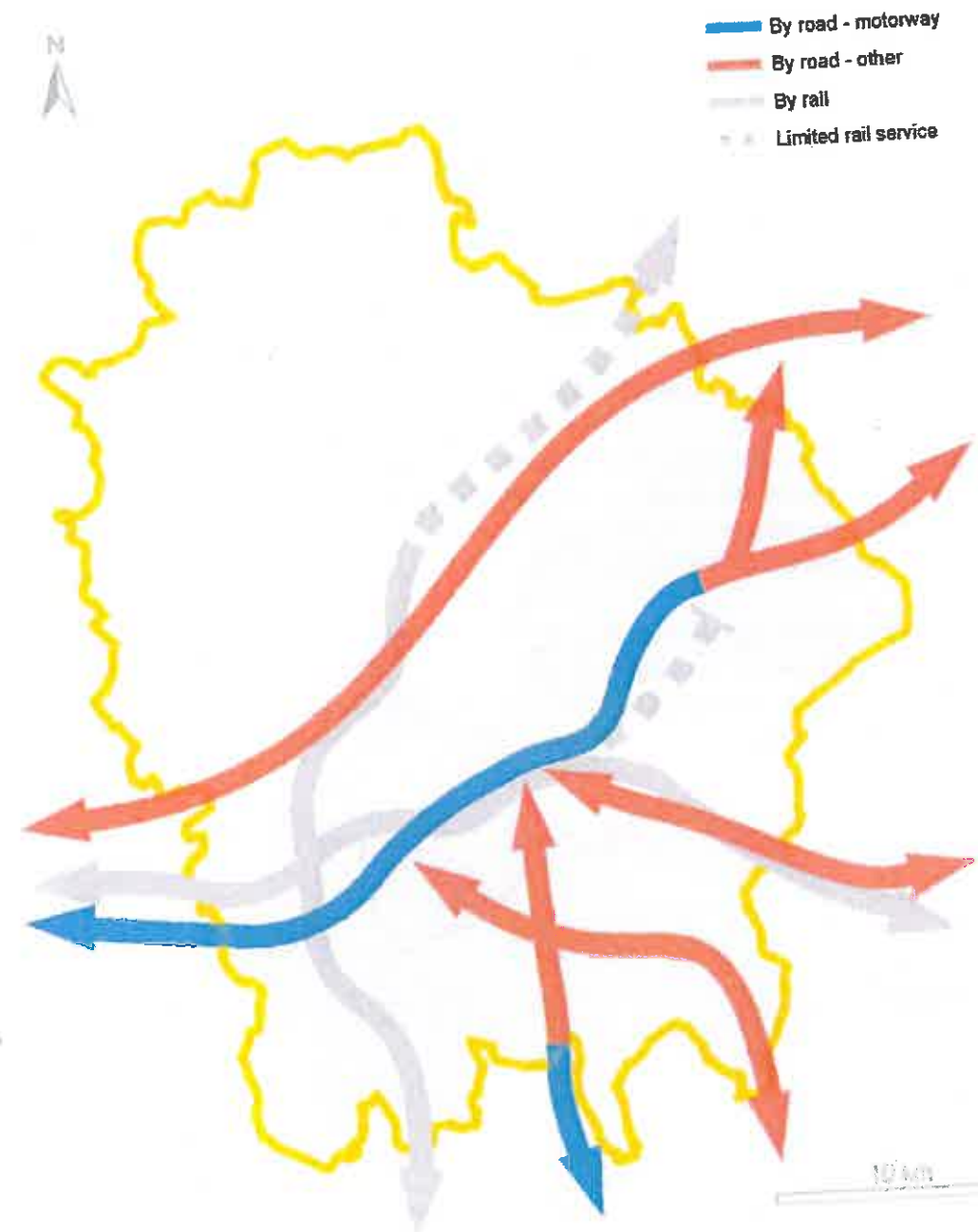


Figure 5. Longer Distance Journeys

Travel Within East Lancashire

Information on where people live and need to travel to in East Lancashire, together with an understanding of the longer distance journeys in the area, provides a basis to understanding the main journey patterns in the area.

Journeys are made for many purposes, but the purpose that dominates the busiest times of the working week is the journey from home to work. This is also the journey type about which most information exists.

Questions about travel to work were asked in the 2011 National Census. So far, none of this information, including the numbers of people commuting between different towns and districts, has been published. When it is, it will be used in the further development of this masterplan. Figure 6 therefore shows best information we have now, although we know that this picture is based on old information and its reliability is therefore questionable.

The major commuter journeys (more than 1,500 a day) are shown in figure 6. The bonds that exist along the M65 corridor are clearly shown, with particularly strong links between Burnley and Pendle and between Accrington and Blackburn with Darwen. Rossendale has very strong connections with Greater Manchester, whilst Blackburn with Darwen and Burnley also have links to Manchester itself. There is also commuting between the districts on the M65 corridor and Central Lancashire. Ribble Valley has ties to Burnley, Blackburn with Darwen and Central Lancashire, with large numbers coming to work in the district, principally at Sarnesbury.

Not shown on figure 6 are the commuter journeys that happen within local areas. Blackburn with Darwen and all five districts all have very high internal daily commuter flows, from around 6,000 in Rossendale, to around 8,000 in Hyndburn, Pendle and Ribble Valley, 9,000 in Burnley and over 13,000 in Blackburn with Darwen.

Whilst most commute times are currently under 15 minutes in most districts, recent survey data shows that the majority of people would be prepared to travel further than they do now, with most prepared to travel for at least half an hour. This will make connections to the wider jobs market, including Central Lancashire, all the more important.

These commuter movements take place in the context of a highway network that has reached or is reaching capacity in a number of places but where sustainable modes are becoming a viable option for some journeys.

The public transport network is, in urban areas, comprehensive, there is a developing cycle network and pedestrian facilities are improving.

However, the reality is that the majority of commuters still chose to use cars. Across East Lancashire, around 70% of commuter journeys are made by car, even in areas of low car ownership where car sharing is more common. For some, it is a choice, often due to perceptions and lack of knowledge of alternatives. For some though, particularly in rural areas, it is a matter of necessity as there are currently only limited viable alternatives.

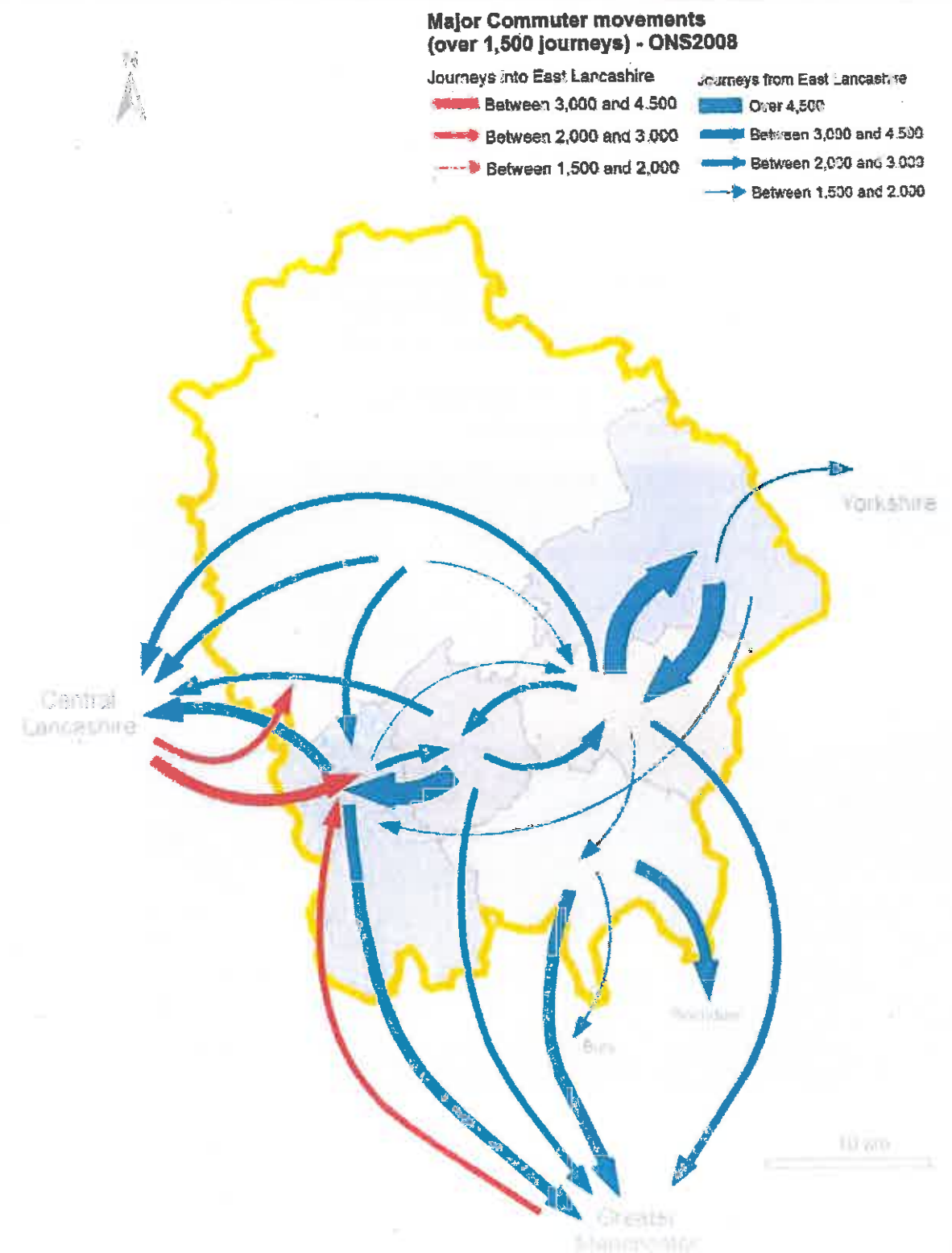


Figure 6: Major Commuting Movement

So far we have looked at where people live, where they are likely to travel to and have showed the resulting travel patterns. But what impact do these journeys have? What do we see on our highways and transport networks?

The car is the dominant travel choice for most people for most journeys. There are many reasons for this, but the most obvious impact on our roads is the amount of traffic they carry, not just in the peak hours but through the whole day.

Figure 7 shows the number of motorised vehicles that use our major roads in a typical day. As would be expected, the highest flows are on the motorway, but there are also some very high volumes of traffic on the roads that are shared by other users for other purposes than simply getting from A to B.

These high levels of traffic on the roads in our communities clearly have impacts that are felt by everyone, not just vehicle occupants.

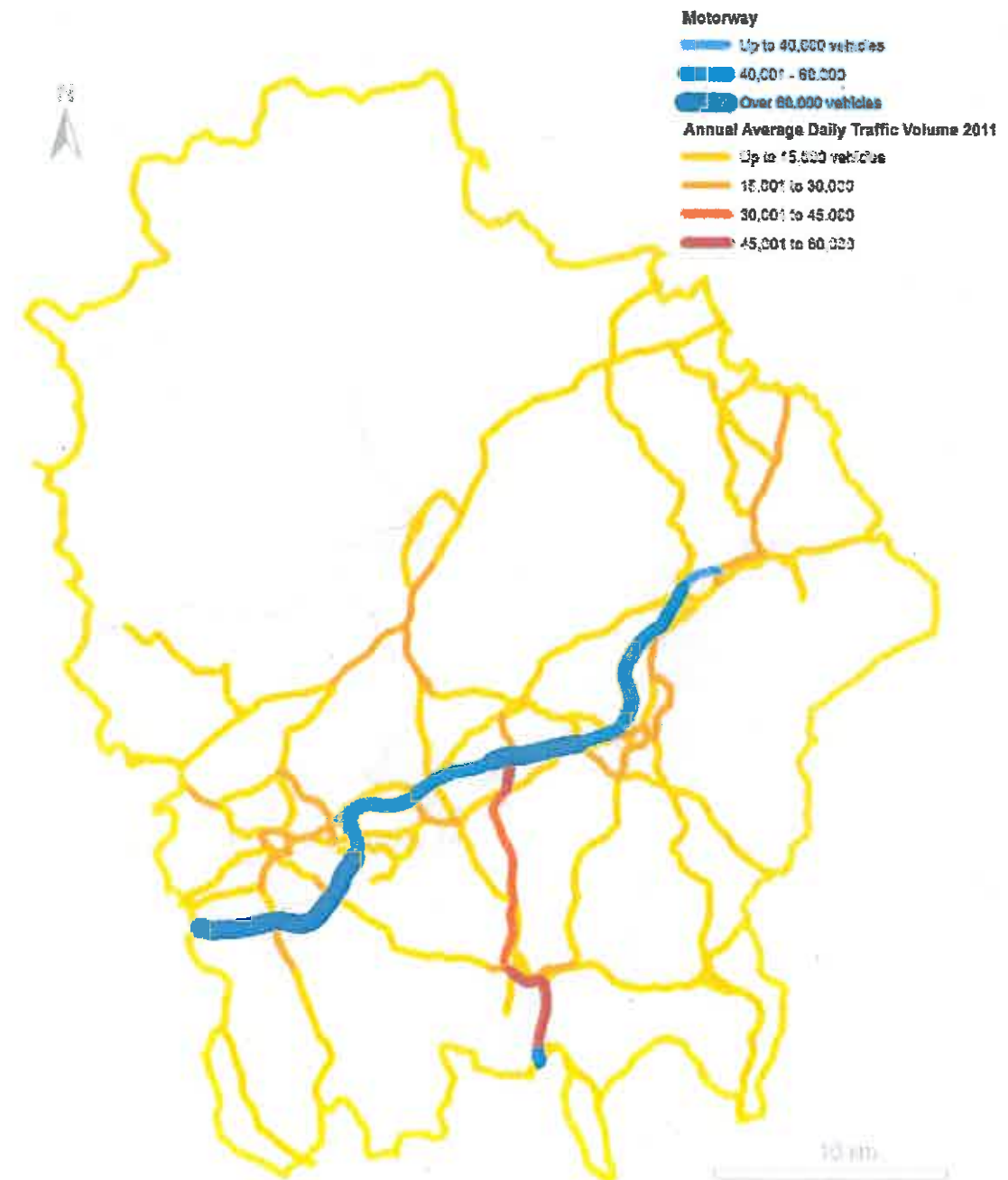


Figure 7: The Current Network

The previous map shows the volume of traffic on our major roads. This traffic of course includes buses, which suffer the same delays as other road users unless there are dedicated bus lanes etc. Bicycles may not be counted in the traffic totals, but cyclists also have to share this road space unless they have dedicated cycle provision.

Figure 8 shows the main sustainable transport provision in East Lancashire. Not surprisingly, the busiest rail station is Blackburn, providing as it does the only current direct service to Manchester. However, the importance and potential of Clitheroe to its catchment area is also clear. Accrington and Burnley Manchester Road are also busy.

The high frequency bus network, which shows the most heavily used services, is good in the urban areas and the links to Greater Manchester are good. Links into the Ribble Valley are more limited, not surprising given the rural nature of the district.

Cycling provision is more varied, although the beginnings of a good cycling network are in place.

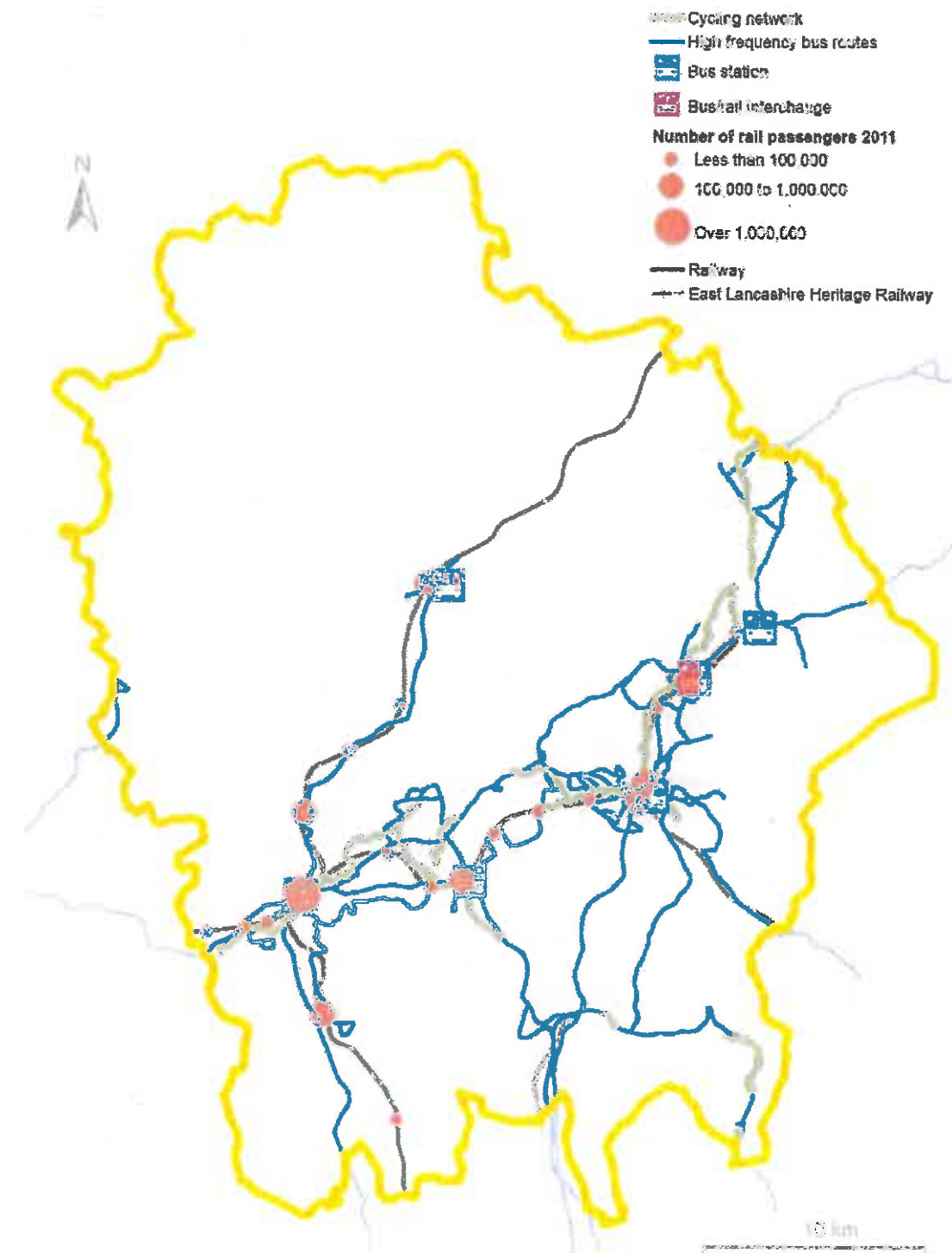


Figure 8: Our current sustainable transport network

So far we have looked at the demands on the network from where people live, where they want to travel to and how they choose to travel.

We now want to look at the impact these journeys have on the economy and on us as we travel about in our daily lives.

There is a strong perception locally that East Lancashire is poorly connected, with both road and rail networks making it difficult for people and goods to move around.

Whilst road links to the west and south are reasonable, connections to the east are ineffective, not least because the M65 motorway finishes abruptly just to the west of Colne. Rail links, on the other hand, are either far from adequate or non-existent:

- Journey times to Manchester, Leeds and Preston are lengthy and for some require a change of train.
- Rolling stock is generally of poor quality.
- Fast, frequent and reliable access by train to Manchester Airport is of critical importance, yet there are currently no through services from East Lancashire.
- Rossendale has no mainline rail service of any sort.
- Poor patronage figures for stations on the Colne branch show just how poorly Pendle is served by rail.

These issues are discussed in more detail when we look at how we can develop our options for travel in East Lancashire.

This sense of isolation and the perception of the area having localised labour markets, narrow travel horizons and limited economic interaction with Manchester, Leeds and Central Lancashire makes East Lancashire's economic development difficult.

More locally, the biggest issue is congestion. Some congestion is inevitable; better economic conditions tend to produce more traffic. However, too much congestion hampers business and makes travel difficult for everyone.

The worst congestion is at peak commuting times, but these peak times are getting longer and traffic is building on less suitable routes as people change their travel patterns to try to avoid the jams.

But congestion is only part of the problem. Increasing traffic has a wide range of unwelcome side effects. Impacts on road safety (a particular problem in the urban areas of East Lancashire) and on local air quality are the most obvious. However, where roads are busy with motor traffic, they can become barriers to local movement. Busy roads can make people worry about safety or about how difficult walking and cycling will be.

For instance:

- people are far less likely to want to cycle or walk any distance due to fears about safety and pollution
- communities suffer if the roads that run through them are busy and difficult to cross other than at limited places
- local centres cannot become sustainable if busy roads make the area unattractive and potential visitors therefore go elsewhere

And as well as these local impacts, there are the wider environmental and social impacts that affect our ability to meet our commitments to:

- reduce carbon emissions
- improve personal health and well-being in Lancashire
- support economic development
- increase community cohesion and
- provide affordable travel options in the future

Until more people have alternatives to the car that they are confident will meet their needs, the number of cars will continue to grow, at least as long as people can afford to run them. The cost of motoring is already a significant burden to many lower income households and this burden becomes even greater as the distance needed to be travelled increases, as happens from more rural areas.

Figure 9 shows where the most urgent and significant highways problems are in East Lancashire, both the congestion, and also where air quality is being affected. Congestion also presents significant issues for public transport reliability and for our communities.

The diagram also shows the rail corridors that are not performing as well as we would like.



Figure 9: Traffic problems today

Looking to the Future ~ Our Priorities

We have looked at what we know of our current transport problems and at the wider issues that impact on transport. We now need to look at East Lancashire in the longer term as both the people and the places of the area change over the next 10 to 15 years.

The future development of East Lancashire is being shaped by policies and strategies being put in place now. These plans allow us to understand how economic development will be promoted and how public health will be improved. Whilst there are also changes that are harder to predict, such as how our weather and climate will alter and how technology will advance, we know that we need to do all we can to make sure that what we do now is sustainable for future generations.

Economic Growth

A key driver of East Lancashire's economic development is the Lancashire Enterprise Partnership (LEP), of which both Lancashire and Blackburn with Darwen councils are members. Other East Lancashire representation is given by the Chairman of Regenerate Pennine Lancashire and the Leader Burnley Borough Council.

The Partnership has an approved Lancashire Growth Plan for 13/14 which sets out how strong and sustainable economic growth can be achieved in the county.

The partnership is the driving force behind the newly created Lancashire Advanced Engineering and Manufacturing Enterprise Zone that covers the two BAE Systems sites at Samlesbury and Warton. The Zone has the potential to create between 4,000 and 6,000 high value jobs in the long term. This will have a significant impact on East Lancashire because of the already strong links to the large aerospace industry supply chain in the area.

The Growth Plan also sets out the key strategic development sites in the county:

The Michelin Site in Burnley, is next to the Heasandford Industrial Estate, 2 miles from the town centre. The entrance to the site and its northern boundary have already benefited from new developments by Aircelle (part of the French Safran group and Burnley's largest employer) and the Lancashire Digital Technology Centre (LDTC). The remainder of the site is now undergoing transformation as 'Innovation Drive', an advanced manufacturing and aerospace supplier park. Development is well underway and a number of companies have already signed up to be tenants of the site.

Burnley Bridge Business Park, next to junction 9 of the M65, is a 70 acre development that is expected to provide 1,400 new and sustainable jobs for the region once full. As well as £3.8 million from the North West European Regional Development Fund (ERDF), the site has also received £2 million of funding from Lancashire's allocation from the Growing Places Fund to help tackle infrastructure and site constraints, including building a new bridge and access road across the Leeds-Liverpool canal to link the business park to the motorway.

The Weavers' Triangle, which straddles the Leeds-Liverpool canal, has the potential to transform Burnley town centre. Offices, leisure activities and education use could create approximately 1,000 private sector jobs. This will be the site of the new University Technical College (UTC) which opens in August 2013. Burnley, Visions Learning Trust UTC specialises in engineering and construction, supporting advanced manufacturing employers within the aerospace supply chain, the nuclear industry and green utilities and technologies.

The development of Burnley Knowledge Quarter will support Burnley's vision to become a centre for advanced manufacturing, digital and creative industries and of educational excellence. The Knowledge Quarter includes Burnley Education Campus ~ home to the University of Central Lancashire (UCLan) and Burnley College - and will contain the neighbouring Knowledge Park, a prestige business park with direct links to the Education Campus.

This development is part of the Arc of Innovation which will support the growth plans of Lancaster University, UCLAN and Edge Hill University, especially their innovation-focused and industry spin-out/spin-in developments. The initial focus will be on maximising synergies between centres of excellence, linking locations including Warton, Preston, Samlesbury, Darwen, Burnley and Barnoldswick.

The Blackburn Knowledge Zone focuses on a new commercial sector adjoining the remodelled Blackburn College Campus with its new University Centre. It introduces high value, knowledge based industries into a town centre that is at the heart of East Lancashire's public transport networks.

Whitebirk Sixty Five in Hyndburn, is a strategic employment site next to junction 6 of the M65, is a 36 hectare development capable of significant job creation.

Other priorities for the LEP include the Local Growth Accelerator Strategy for East Lancashire. This will be focused on delivering economic change but will also support the delivery of innovative ways of tackling deprivation and economic inactivity, in particular enabling residents from deprived communities to access new jobs or enterprise opportunities.

Sector Delivery Plans will be put in place to unlock opportunities of national significance in emerging and established growth sectors. Plans will focus on the rural economy of Lancashire, which has strong growth characteristics, and on Lancashire's visitor economy, which already attracts more visitors than the Lake District, but has a value and profile that can be significantly improved.

Whilst the LEP provides the strategic vision for Lancashire's growth, how land is used is a vital factor in how an area's economy and people develop. Housing and development must support economic growth but must also ensure that public health considerations are taken into account and that future plans are sustainable.

The key document that sets out how land use and development will be managed by a planning authority is the Core Strategy. This is the main component of a Local Plan and provides the spatial background to the development of our highways and public transport networks.

However, whilst Blackburn with Darwen, Hyndburn and Rossendale all have recently adopted Core Strategies, only Blackburn with Darwen have published more detailed site allocations. Burnley and Pendle adopted Local Plans in 2006 but are now replacing them with new emerging Local Plans. whilst Ribbles Valley has yet to adopt its Core Strategy. This means that definitive information on development is not yet available throughout the area of this masterplan.

Blackburn with Darwen Council expects a net increase of over 9,300 homes, of which over 77% will be larger family homes. The preferred location of these developments will be in the inner urban areas of Blackburn and Darwen, or accessible locations elsewhere within the urban area.

Pendle's population is increasing, with a need for around 4,500 new homes over the next 15 years which will significantly alter the housing offer in the Borough.

Elsewhere, the growth is forecast to be on a smaller scale with between 3000 to 3700 new homes built in Rossendale and Hyndburn. In Hyndburn 75% of these will be delivered in Accrington and surrounding townships; in Rossendale 50% will be delivered in Bacup or Haslingden and the remainder in Rawtenstall and the smaller settlements.

Ribble Valley expect to see the development of around 1,900 new homes, with over 1,000 of these on the Standen site at Clitheroe.

As well as the strategic sites identified by the LEP, there are a number of other sites that have been identified by the planning authorities for future local development.

Blackburn's Cathedral Quarter centres on the key landmarks of the cathedral and the railway station. The area will become an important gateway and meeting point in the town centre, providing a hotel, offices, restaurants, shops and a new public square and bus interchange.

Also in Blackburn, a major transformation of the Freckleton Street area is planned which will see it become a major new mixed use quarter. The Furthergate area, which forms a gateway into the town, is also expected to see redevelopment.

The M65 corridor is the home to a concentration of developments. The LEP has identified sites at junctions 6 and 9, but there are also local plans for a large mixed development at Clayton which could offer significant local employment as well as housing.

At Huncoat, the former power station and colliery also lie in the M65 corridor. This site again has the potential for a large mixed development, with up to 96 hectares of employment land and a further 35 acres given over to housing.

The Pendle Gateway consists of a series of employment opportunities along the M65 corridor concentrated round Junctions 12 and 13. At Junction 12, Brierfield Mill is proposed for a mixture of employment, leisure and residential uses. The 7 hectare site has over 35,000sqm of existing accommodation and the potential to create 1000 jobs. There are also proposals to expand the existing Lomeshaye Industrial Estate which adjoins J12 to provide 85,000sqm of new floorspace with over 2,100 jobs and there is a further 30,000sqm of new mixed residential/employment space at the Riverside Business Park off Junction 13. This will be complemented by mixed developments at Reedyford Mill and Riverside Mill in Nelson

At the end of the M65 in Colne, there are plans for a significant employment development which will be complementary to the Boundary Mill store.

West Craven, centred on Barnoldswick, is also a key location with Rolls Royce, a key global manufacturer in the aerospace industry, at its heart. An extension to West Craven Employment Zone in Earby will help to support the LEP's focus on maximising the economic value and benefits of the emerging Arc of Innovation.

To the south of the area, the Rawtenstall Development Zone, situated in the town centre, includes both the New Hey Business Park and the Valley Centre, the latter being intended for retail and office use.

Health and Wellbeing

In April 2013, the county council took responsibility for some work that was previously carried out by the NHS.

The county council and the NHS will now work together to tackle some of the key issues that affect people's health and wellbeing, helping people to stay healthy and prevent illness. The changes will make sure that public health experts have a greater input to many of the different council services, that impact on people's health including education, housing, transport and the local environment.

We already know there are health and social issues of real significance in East Lancashire and that our transport networks could help to address. Among the work that the county council will take responsibility for are a number of strands that have a bearing on the masterplan:

- tackling obesity
- increasing levels of physical activity;
- public mental health;
- cancer and long-term conditions prevention through behavioural and lifestyle campaigns;
- accidental injury prevention;
- community safety promotion, violence prevention and response(public health aspects);
- tackling social exclusion through local initiatives (public health aspects);
- public health services for children and† young people aged 5~19.

The Joint Strategic Needs Assessment (JSNA) of health inequalities carried out in 2009 pinpoints the impact of deprivation on health and well being:

- People in the most deprived parts of the area are 70% more likely to be hospitalised by, and twice as likely to die from, an accident as those living in the least deprived areas.
- People living in Lancashire's most deprived areas are nearly twice as likely to die from coronary heart disease and more than twice as likely to die from a stroke as those living in the least deprived area Children living in the most deprived areas have twice the risk of dying as those living in the least deprived areas.
- Less than two thirds of the population in the most deprived areas reported good overall health and wellbeing, compared to almost 80% in the least deprived areas.
- Quality of life indicators display strong social gradients with those further down the scale likely to have lower quality of life.
- Approximately one in five people across Lancashire experience problems walking or difficulties in performing usual activities, rising to more than a quarter of those in the most deprived areas.

These statistics are all relevant to how we plan for future travel. Among the recommendations of that JSNA are a number that the masterplan seeks to address:

- Address material deprivation:
 - ~ Increase income/reduce child poverty
 - ~ Reduce unemployment/worklessness
- Promote resilience to the health effects of inequality and deprivation
 - ~ Improve community safety
 - ~ Improve the environment/green space
 - ~ Improve skills, lifelong learning and educational attainment
- Improve health behaviour
 - ~ Improve the design of the built environment
 - ~ Reduce overweight and obesity
 - ~ Increase physical activity

Above all, the masterplan will 'maximise the health effects of transport planning/policy', a specific goal of the JSNA.

Sustainability

From the National Planning Policy Framework to the Local Sustainable Transport Fund, sustainability has become a key factor in all plans and policies. For a highways and transport masterplan, it presents several key challenges to what we want to achieve.

- Lancashire's transport infrastructure assets are the most valuable publicly owned asset managed by the County Council, with a combined estimated gross replacement cost of about £9 billion.

Without this infrastructure, Lancashire would not be able to function as a place to live, work or visit. Given the importance that Lancashire's transport infrastructure plays in our everyday lives and in our economic future, it is vital that we maintain and manage this asset as sustainably as possible, maximising benefits and opportunities and reducing negative impacts as far as possible to provide best value for the people of Lancashire.

- The roll out of superfast broadband across the county will have a fundamental impact on how many of us do business on a day to day basis. It will allow many people to reduce the amount they have to travel ~ we can shop from home, download films and games and, of course, work from home. For businesses, it will offer far greater access to customers and digital media, also with less need to travel.

We need to maximise the benefits of reduced car traffic for our highways and transport networks while also taking account of the negative impacts, such as greater delivery traffic. We also need to ensure that those who cannot or do not adopt superfast broadband are not forgotten.

- There are many areas of East Lancashire that are remote from employment and services. Many of these are in the rural areas of the county, but it would be wrong to assume that all our towns and villages have good connections, particularly to the east of the area. These areas have come to rely on the car, making it very difficult for those without their own transport. However, increasing car use is unlikely to be sustainable in the future. Providing alternatives both for residents and for visitors will therefore be vital for economic development.

- There is now little argument that we need lifestyles that generate a smaller carbon footprint. 'Low carbon' transport has the potential to allow individuals to make a genuine difference to the world around them. However, the evidence of travel choices made at the moment shows that what is on offer now is not what people are prepared to switch to. This suggests that we need to do more to provide low carbon options that more people want to use.

- East Lancashire has some of the most stunning scenery in the county. With the Forest of Bowland in the north, the iconic Pendle Hill in the centre and the Pennine Moors in the south, the area's geography provides both constraints on development but also a wonderful natural heritage to be enjoyed and protected. As well as future development, Figure 10 also shows how the environment of East Lancashire impacts on development:
 - the areas of outstanding natural beauty
 - the green belt, put in place to prevent the merging of neighbouring towns and to direct investment to the older parts of the urban areas.
 - the high quality agricultural land.
 - the areas at risk of flooding and
 - the areas of nature conservation value.

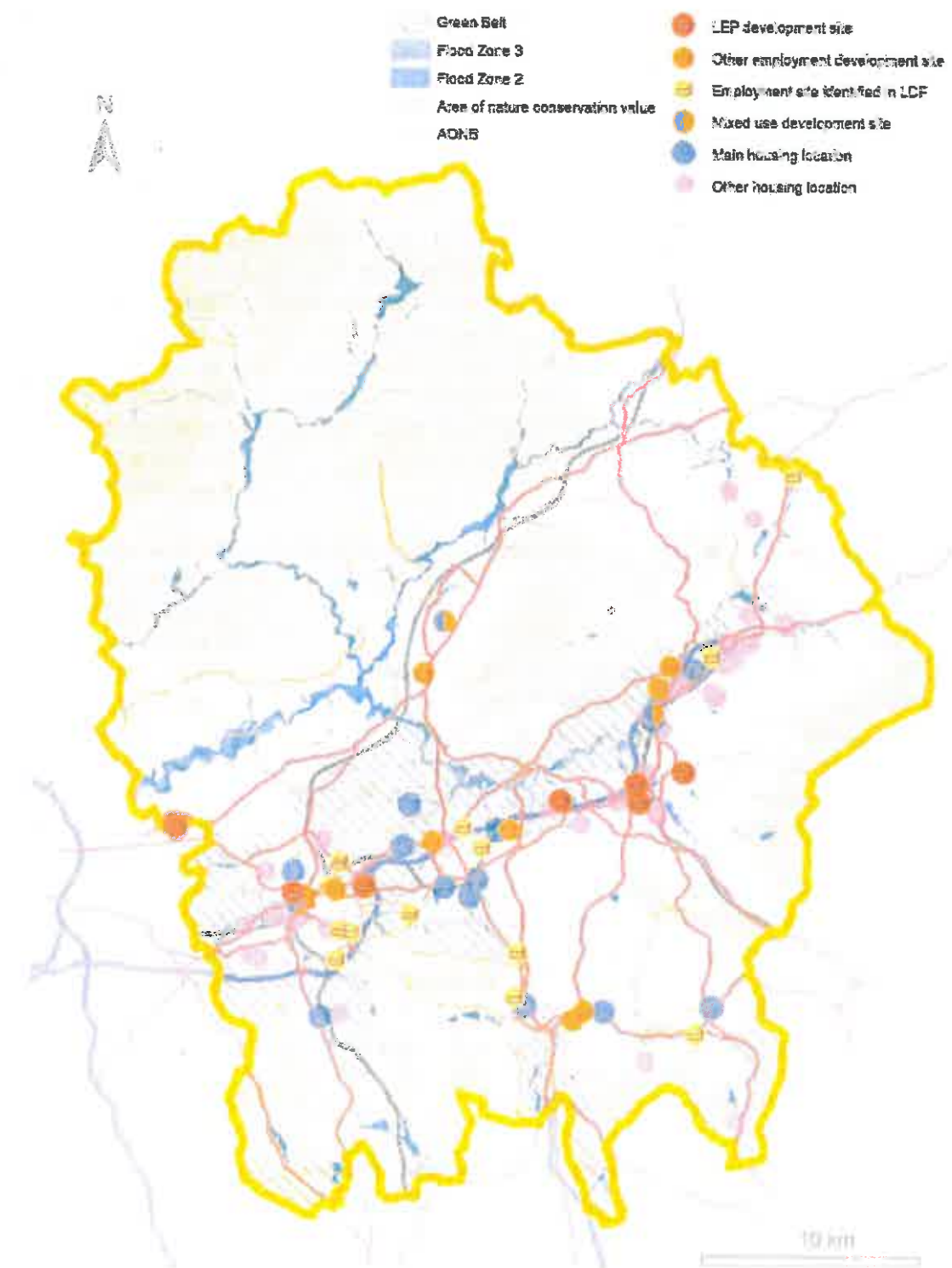


Figure 10: Future Plans and Priorities

Looking to the Future ~ Funding

There is already a substantial public sector funding investment in infrastructure identified in East Lancashire, with almost £130m set out in this master plan to 2021/22. Year on year, this is broadly similar to the public sector contribution towards delivery of the Central Lancashire Highways and Transport master plan to 2024/25. Additional schemes are likely to emerge from the study work we intend to carry out over the next two years.

This funding in part results from the way funding for transport infrastructure is changing. These changes are already happening, as the Preston, South Ribble and Lancashire City Deal shows. The City Deal's £334m Infrastructure Delivery Programme includes four major highway schemes and the local community infrastructure, such as schools and health facilities. The Delivery Programme is funded through pooling local and national resources, including funds from the DfT (including the Local Major Scheme Programme), from local government and from private sector investment through Community Infrastructure Levy (CIL).

We now need to be ready to take advantage of these changes, set out below, for the benefit of the rest of Lancashire.

Government Funding

The changes to the way transport infrastructure is funded will come into effect from 2015/16. From that time, Transport for Lancashire (TfL) will be responsible for a multi-million budget devolved from the Department for Transport. TfL will decide which local major transport schemes to prioritise for funding, review and approve individual major scheme business cases, and ensure effective delivery of the programme.

Through the Preston, South Ribble and Lancashire City Deal, Transport for Lancashire has secured a ten year local major transport scheme allocation from the Department for Transport, something only achieved by four other local transport bodies nationally (Greater Manchester, West Yorkshire and York, the Sheffield City region and South Yorkshire and the West of England). This will facilitate delivery of agreed priority schemes such as the Clitheroe to Manchester Rail Corridor capacity improvements alongside City Deal infrastructure improvements in Central Lancashire.

As TfL is a committee of the Lancashire Enterprise Partnership (LEP), this creates for the first time the opportunity to integrate key economic and transport priorities and plans. Transport for Lancashire is therefore able to make robust and binding decisions that transcend complex local economic relationships, transport patterns and local government administrative boundaries.

In June 2013, the Chief Secretary to the Treasury confirmed the establishment of the Single Local Growth Fund (SLGF). The SLGF will amount to over £2bn in 2015/16 and will include a significant amount of local transport funding. In addition to funding for local major transport schemes, from 2015/16 the SLGF will include over 40% of the Integrated Transport Block (IT Block) funding currently received directly from the Department for Transport by local transport authorities. The Government has committed to maintain the SLGF at a total of at least £2bn each year in the next Parliament.

IT Block funding is capital funding used by local transport authorities for small transport improvement schemes costing less than £5 million. Schemes include ~ small road projects, road safety schemes, bus priority schemes, walking and cycling schemes and transport information schemes. The reduction in the amount of IT Block from 2015/16 will mean that the County Council and Blackburn with Darwen Borough Council will have less direct guaranteed funding for local transport schemes going forward.

The SLGF will be a single pot with no internal ring fencing. Access to the fund will be through a 'Growth Deal'. This will be a process of negotiation, with areas making their case to the Government in much the same way as for City Deals, leading to bespoke decisions on the amount and flexibilities that each area will receive, subject to robust governance arrangements. Positive negotiations with the Government regarding the Preston, South Ribble and Lancashire City Deal indicate the overarching governance arrangements of the Lancashire Enterprise Partnership are considered fit for purpose.

The amount of funding unlocked through a Growth Deal will depend on the strength of the Strategic Economic Plan prepared by the LEP, which will cover the period 2015/16 to 2020/21, and must be submitted to the Government by March 2014. Local Enterprise Partnerships with the strongest Strategic Economic Plans that can demonstrate their ability to deliver growth will gain the greatest share of the SLGF.

Strategic Partners

Our strategic partners are also seeing changes that will impact on what we can achieve through this masterplan.

The rail industry is complex, with operation of the infrastructure separate to the operation of passenger and freight train services.

Network Rail is the private sector monopoly owner and operator of the national rail network, including track, signalling, bridges and tunnels. It operates in 5 year 'Control Periods' (CP), for which delivery plans are produced. CP5 will start in April 2014, with CP6 in April 2019.

However, the Government's High Level Output Specification (HLOS) and Statement of Funds Available (SoFA) determine what is delivered in these control periods. These set out what the Government wants achieved by the rail industry during that control period and the amount of money available.

The HLOS and SoFA for CP5 have been published. In order to achieve infrastructure improvements in Lancashire in the next CP, we therefore need to be in a position to influence the development of the HLOS that will determine activity in CP6.

Many rail services in the county carry people making relatively short journeys and are a key part of an area's local public transport network. They have seen substantial growth in demand in recent years, a trend that is expected to continue.

At the moment the franchise contracts underlying most train services in England are specified, funded and managed centrally by the DfT based in London. The Government is currently looking at whether decisions relating to local rail services should be made closer to the communities they serve, a process called 'Rail Devolution'.

Rail devolution recognises that local decision makers may be best placed to recognise trends in usage and demand and to identify how transport networks can adapt to new housing and/or employment patterns and to therefore determine how the transport network can develop in a way that contributes to achieving the wider economic objectives of an area. They are also able to compare the benefits of expenditure on different types of transport provision and make decisions on priorities for expenditure on investment and subsidies, recognising the interests of different groups of users.

Away from the rail industry, the Highways Agency (HA) is an Executive Agency of the DfT and is responsible for operating, maintaining and improving the strategic road network in England, which includes major trunk roads and most motorways.

Route based strategies are currently being taken forward by the HA, including one covering Lancashire. The strategy initially will identify performance issues on routes and also future challenges, taking account of local growth challenges and priorities. This stage is expected to be complete by April 2014. The HA, working with the DfT, will then use this evidence to identify and prioritise possible solutions to inform investment plans for the next full government spending review in 2015 and beyond.

Throughout the process, we will work with the HA both to understand the issues on Lancashire's strategic roads now and in the future and to ensure that the resultant investment plan meets our needs.

Developer Contributions

When a development is proposed, Section 106 agreements can be put in place to make it possible to approve a planning proposal that might not otherwise be acceptable in planning terms. For example, a section 106 agreement might require a developer to fund improving the access road to a site, to ensure that access will be safe once the development is completed. They are specific to the site that is proposed for development.

Since April 2010, local authorities have been able to charge a 'Community Infrastructure Levy' (CIL) on any new development above a certain size. CIL is a general levy on all development, designed to raise funds for infrastructure needed generally as a result of an increase in development in an area. We are now in a transitional period where both CIL and section 106 agreements can apply. However, at some point, currently set at April 2014, local planning authorities will be more limited in the use of section 106 agreements for transport infrastructure.

In preparation for CIL, local planning authorities are preparing 'charging schedules' as part of their local development frameworks. The schedule sets out what, if anything, the charge will be per dwelling for residential development, or per square metre for all other development. In setting the charges, planning authorities need to balance the desire for CIL funding to support infrastructure with the potential impact of CIL charges on the economic viability of development.

In Lancashire, this need for balance is a key issue as local development frameworks are revised and completed. There is a need to secure developer funding from private sector investment and to do so housing allocations of an appropriate nature and scope to generate CIL need to be made. Areas that could be suitable for such development include our smaller towns such as Huncoat, Fence, Barnoldswick and Earby, where infrastructure improvements are already planned, although the potential for development exists in other areas.



Looking to the Future ~ What are the Challenges?

As the previous pages show, East Lancashire faces considerable challenges in its future development. However, it also has many advantages working in its favour.

These positive and negative influences are summarised here to show the strengths and opportunities in the area and also the potential weaknesses and threats. Appreciating these provides us with the understanding of what will influence and shape our highways and transport network in the future.

Strengths

- The LEP working in partnership with the County Council, Blackburn with Darwen Council and the district councils to support and enable development ensuring collaborative County wide approach to fostering growth
- Significant high tech and knowledge based business presence (BAE Systems, Rolls Royce, Arcelormittal and high value SME's)
- LEP public/private collaboration delivering the Lancashire Enterprise Zone (Warton & Samlesbury sites -- Advanced Engineering and Manufacturing)
- Strong built heritage and outstanding natural landscapes
- Culturally diverse population
- Expansion of the education facilities in Blackburn and Burnley
- Resistance to downturn showed by Cities Outlook 2013
- Skilled workforce prepared to travel across area
- Committed programmes for new transport investment
- Outstanding leisure and recreational opportunities

Opportunities

- The Strategic Economic Plan and Growth Deal
- Core Strategy and emerging individual Site Allocation Local Plans for the districts across the area show advancing plans for accommodating new development
- Comprehensive development plans include strategic sites as a focus for investment
- Rising educational standards
- Devolved funding for local major transport schemes
- Potential City Deal
- Proximity to Preston, Manchester and Leeds
- Quality of Place attributed town centres, historic environments, the Leeds-Liverpool Canal, countryside
- A growing visitor economy
- Todmorden curve providing new direct rail links to Manchester
- New development
- Substantial committed public transport investment
- Superfast broadband

Weaknesses

- Need to overcome the legacy of the past
- External image of East Lancashire
- Travel horizons are perceived to be more limited than they are
- Low confidence and aspiration in many communities
- Poor educational attainment and lack of higher level skills in parts of the community
- High levels of worklessness
- Poor rail connectivity (non-existent in places)
- Lack of 'low carbon' transport alternatives
- Poor life expectancy and ill health
- Lack of town centre investments and development
- Limited housing choice and quality
- Transport network unable to cope with future demands
- Out-of-town decentralised retail, business and commercial developments
- Lack of town centre investments and development
- Limited housing choice and quality
- Transport network unable to cope with future demands

Threats

- Transport network unable to cope by 2026
- Growing car ownership and use, with limited alternatives
- Perception of East Lancashire as a cul-de-sac
- Decline of public transport for non car owners
- Sluggish economic climate
- Financial threats and uncertainty
 - Comprehensive Spending Review
- Uncertainty amongst private investors
- Reluctance to change travel behaviour
- Poor external image and perceptions of some parts of East Lancashire
- Congestion on major routes outside the area, particularly in Greater Manchester

Our Vision

Transport is an enabler. In most cases, it doesn't 'do' anything itself but it does allow society to function. Developing our options for East Lancashire's highways and transport networks therefore involves asking a fundamental question: what do we expect these networks to do?

We have shown that there are travel and transport problems now. Connections in and out of East Lancashire, for both people and freight, need to be better, with improved journey times and reliability both east and west, to Central Lancashire and Yorkshire, and south to Greater Manchester.

The employment and housing development considered previously, both strategic and more local, presents a major opportunity to regenerate and improve East Lancashire. Our networks will need to be able not just to cope with this development in the future but to positively enable these aspirations to the benefit of the area as a whole.

The demographics of the area have been discussed. We therefore know that we need to ensure that employment and education opportunities can be accessed both locally and further afield. We also know that these travel opportunities must be sustainable and cost effective. The residents of our rural areas must also be considered as deprivation by distance is a real threat in these areas.

Lastly, the visitor economy is of increasing importance in the area. From retail outlets to adrenaline sports, the area offers numerous tourist destinations. It also has magnificent countryside that will need to be accessed sustainably to enable the rural economy to flourish without destroying the countryside that it depends on.

And on top of these needs is the need to reduce our carbon footprint and make sure that we travel as sustainably as possible.

So what do we expect our networks to do?

The 5 principles that will guide the development of the East Lancashire masterplan are that we will:

- Support the economic development of the county and of East Lancashire specifically
- Work to address deprivation
- Promote community resilience
- Increase healthy behaviour
- Reduce our carbon footprint

We will do this by ensuring that:

- Sustainable travel becomes the choice wherever possible, even in rural areas.
- The county's strategic employment sites flourish and are well connected nationally and internationally.
- Local developments and business are supported and have the strategic and local connections that they need to succeed.
- People from all communities are able to access the employment and education opportunities that are available both in East Lancashire and further afield.
- Active travel is encouraged and supported, making walking and cycling safe and easy choices for local journeys.
- Public realm improvements support both new development and existing communities and enhance the appearance and safety of sustainable travel routes.
- Visitors find the area attractive and easy to travel around without a car.



Taking Our Vision Forward ~ What We're Doing Now

Whilst we may not have all the information we need to finalise this masterplan, we do know a lot now and we and our partners already have schemes in place to tackle many of the problems, as figure 11 shows.

Lancashire County Council's Local Transport Plan has already been mentioned. It sets out a broad strategy for how transport and the way we travel in Lancashire will change moving forward to 2021. The Local Transport Plan's objectives are set out in the introduction of this masterplan. The current Local Transport Plan Implementation Plan sets out schemes that will be implemented in the next three years to 2015/16.

Blackburn with Darwen's Local Transport Plan likewise sets out a strategy for transport to 2021. This seeks to develop a sustainable and efficient transport network for the borough that will enable economic growth and deliver opportunities of access for all, with specific objectives very similar to those of Lancashire.

The LEP, through Transport for Lancashire (TfL), has approved the Local Major Transport Scheme Investment Programme for Lancashire. Six schemes are in the investment programme and will be funded subject to detailed scheme development and appraisal demonstrating that they represent high value for money. A further six schemes are within the development programme.

Lastly, we are already carrying out studies to support both the masterplan and TfL. These studies are starting to help us understand how to adapt the highways and transport networks to the pressures facing them.

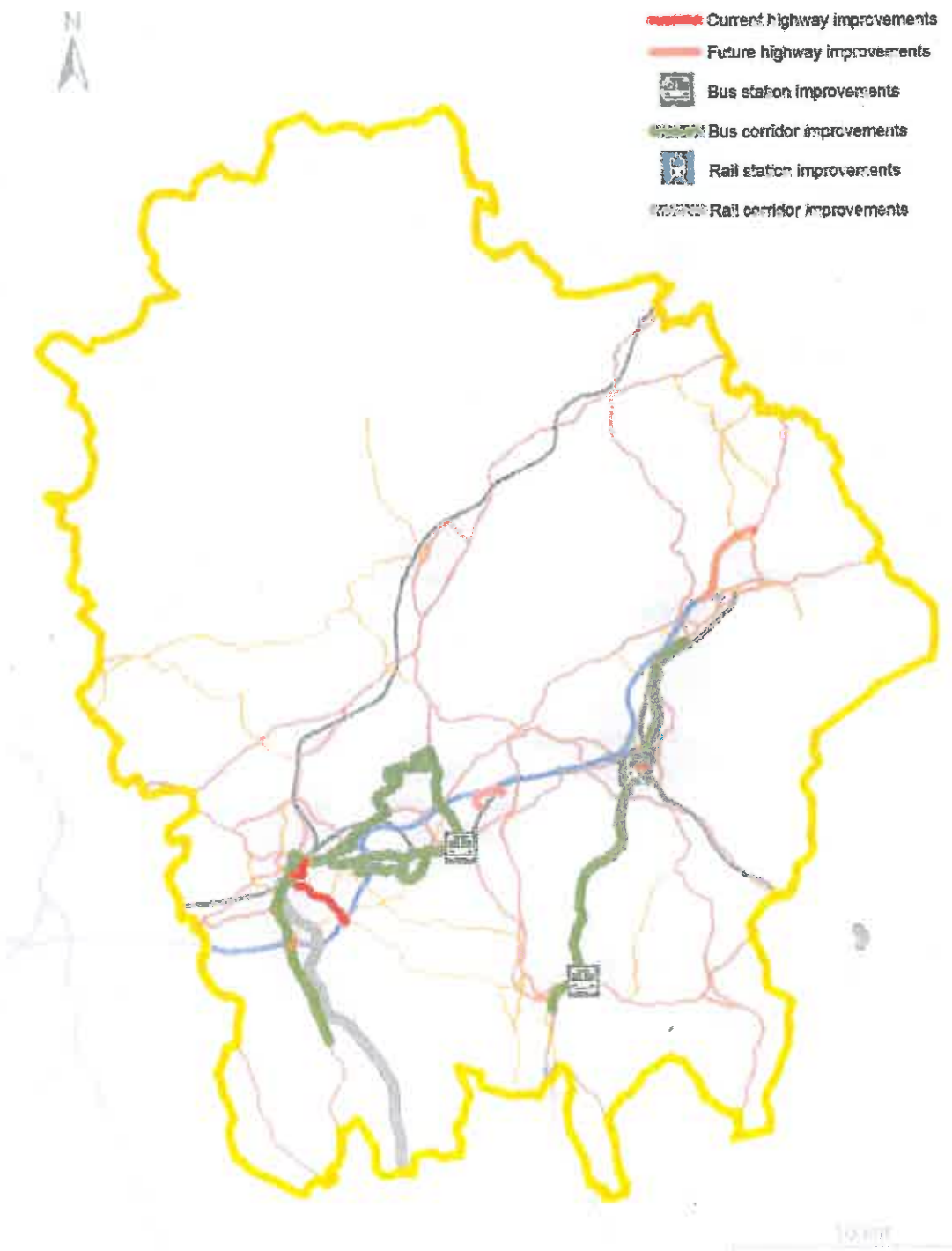


Figure 11: Current Schemes and Proposals

Current Schemes:

Todmorden West Curve

Burnley Borough Council recently made a successful bid to the Regional Growth Fund to secure the funding needed for the re-instatement of the Todmorden West Curve. The re-instatement of this 500 metre length of track will allow a direct service from Burnley to Manchester.

The new train service will provide an hourly service between Manchester and Blackburn via Todmorden, Burnley, Accrington 7 days a week. The service is currently planned to start in December 2014. Initially journey times between Burnley and Manchester will average about 55 minutes but a further timetable change in Dec 2016 will see this reduced to nearer 45 minutes.

Pennine Reach

Pennine Reach will provide a new rapid bus service designed to improve public transport in Blackburn with Darwen and Hyndburn, giving improved access to key strategic employment sites (including Whitebirk65), education, health, shopping and leisure facilities.

It will operate between Accrington and Blackburn via Clayton-le-Moors, Great Harwood, and Rishton and between Accrington, Blackburn and Darwen. The proposals include a fleet of high quality, easy access buses, dedicated bus priority, better passenger facilities, innovative ticketing solutions and real time bus information. Services will link with the strategic rail network and local shuttle services.

The proposal also includes a new bus station in Accrington town centre and an interchange in Great Harwood, the former providing interchange facilities with the recently refurbished railway station in Accrington. The Department for Transport will provide £31.9 million (80% of the total cost) and work is due to start in 2013/14.

Improvements to Burnley Manchester Road

Manchester Road railway station is about to undergo a major redevelopment, ahead of the introduction of a direct train service to Manchester, from December 2014, which will be made possible by the re-instated Todmorden Curve. Improvements will provide better facilities for residents of Burnley, making it easier to access education and employment opportunities.

Proposals for the redevelopment of the station include:

- A new railway station building which will introduce manned ticket facilities
- New platform waiting shelters to both platform 1 & 2
- Improved entrance for pedestrian use of Manchester Road
- New cycle parking provision and
- New car parking to provide 50 spaces and 4 new DDA parking spaces.

The scheme includes links between the railway station and town centre with the provision of a signalled pedestrian/cycle crossing on Trafalgar Street and the addition of pedestrian facilities to the Manchester Road/Finsley Gate/Queen's Lancashire Way signal junction. Improvements will enhance access to Burnley Town Centre and the Education and Enterprise Zone at Princess Way.

Rawtenstall Bus Station

The bus station in Rawtenstall is dated, peripheral and no longer fit for purpose.

In 2013, Rossendale Council held a design competition for architects to come up with proposals for the former Valley Centre Site and adjacent including the police station, one stop shop and former town hall. The proposals had to include a new bus station within the site, working with design parameters provided by the County Council, including stand numbers and other technical features that they needed to incorporate.

The competition closed at the end of August with the winning architect being announced in early October. Rossendale Borough Council will be working with the architect to deliver the scheme, but the County Council has committed £3.5 million to meet the cost of the new 8-stand bus station

Nelson to Rawtenstall Bus Corridor Study

We are currently looking at what small-scale infrastructure and system improvements will provide the greatest benefit along the Nelson to Rawtenstall bus corridor, particularly for the Nelson-Manchester (X43) bus service. This is the first stage in improving journey times and reliability to enhance public transport between the town centres and extend opportunities for people to access employment, education and training in Manchester.

A second stage of the study will develop an integrated solution for all travel modes centred on the local network within Rawtenstall. This will include a review of the New Hall Hey roundabout Park and Ride site as well looking at how enhancements for buses could also improve the gyratory for other users, particularly pedestrians.

Freckleton Street Link Road

Completion of the Freckleton Street Link Road by BwDC (programmed for October 2014) will see an important part of the Blackburn Town Centre orbital route delivered. This scheme will complete the orbital route between Copy Nook and the Towns Moor retail park and comprises improvements to the highway and a new bridge over the Leeds and Liverpool Canal in the vicinity of Jans Conference Centre.



TfL Schemes

The TfL Major Schemes Programme includes 3 schemes in East Lancashire that, once the scheme appraisal has demonstrated value for money, will be funded from 2015/16.

Clitheroe to Manchester Rail Corridor Improvements

To improve connectivity between the Ribble Valley, Blackburn and Manchester, improvements are planned to the standard and frequency of rail services between Blackburn and Manchester. This will involve the selective double tracking of the railway line between Bolton and Blackburn.

The Blackburn to Manchester route is the busiest serving Manchester without a core two trains per hour service. However, demand between Blackburn and Manchester is similar in magnitude to the combined Manchester demand for Bradford and Halifax. By extending the length of double track railway line, service frequencies will be increased to a half-hourly service throughout the day, with an increased frequency at peak hours. Reliability will also be improved.

There will also be improvements to passenger waiting facilities and information provision at selected stations north of Blackburn and South of Darwen.

Centenary Way Viaduct Major Maintenance Scheme, Burnley

The Centenary Viaduct is a seven span continuous bridge carrying the A682 through the centre of Burnley. It is a critical part of Burnley town centre's road network and without it, effective movement through Burnley would be impossible.

Because of its poor condition, abnormal loads are currently banned from the viaduct. This is a significant problem at a time when Burnley is developing rapidly and has major infrastructure projects underway. Abnormal loads, including cranes and other plant, need to be able to move freely. In the 12 months before the restriction, 231 such uses were logged. The scheme will rectify the numerous defects that have been identified in the structure and allow it to reopen to all traffic.

Haslingden Road Corridor Improvements, Blackburn

The scheme will widen Haslingden Road and upgrade mini roundabouts to signalised junctions, facilitating future regeneration and reducing congestion. Safety for cyclists and pedestrians will also be improved.

Significant development in the Haslingden Road corridor has placed additional pressure on the surrounding highways network. Haslingden Road, Walker Park, Roman Road and Shadsworth industrial estates provide a range of employment, business, health and leisure opportunities and there are also plans for 2,243 new homes locally. The improved access could see the creation of up to 1,900 extra jobs.

The Major Schemes programme also includes a development programme for schemes which are acknowledged to be a TfL priority, but which are not yet in the investment programme. In East Lancashire, this includes a further 2 schemes.

M65 Junction 4 Upgrade

This scheme involves the full signalisation of the M65 junction 4 at Earcroft, which will ensure that traffic can exit the M65 without excessive queuing. The scheme includes associated access improvements into the Chapels area of Blackburn with Darwen, supporting the Council's Housing proposals in East Darwen, the build-out of remaining land south of M65 Junction 4 and at Lower Darwen Paper Mill.

A56 Colne-Foulridge Bypass

The A6068, as it passes through the North Valley area of Colne, carries traffic of around 25,000 vehicles per day including over 1,300 heavy goods vehicles. Not surprisingly, this causes severe problems, with congestion and delays throughout much of the day. In the peak hours, the congestion is among the worst in Lancashire. The standing traffic affects local air quality, resulting in a declared AQMA, and the road effectively severs the North Valley housing areas from all amenities in Colne. A route for the bypass has been protected for a number of years.

The M65 to Yorkshire Corridor Study was commissioned by Lancashire County Council to investigate whether a bypass was still the most appropriate solution to Colne's problems and, if so, whether the old scheme was still the route to take forward. That study has now been completed and the findings and the LCC preferred option are presented in Appendix 1.

Other Schemes

There is one other scheme that, like the A56 Colne-Foulridge Bypass, has had its route protected for a number of years. However, funding for this scheme will come from the development that it will make possible.

The proposed Whinney Hill link road is a single carriageway road approximately 3km in length that will run to the north of Huncoat village near Accrington. It will pass through an area of agricultural land and rough grassland, crossing the former Huncoat Colliery and power station sites.

Traffic congestion has resulted in poor air quality in the Huncoat area, with a large number of HGVs currently forced to use the village roads. With the development of new housing on the former colliery site at Huncoat, development of Huncoat as a major employment site, and employment sites at junction 7, congestion is forecasted to get worse.

The road would divert traffic from roads across a wide area, in particular out of the built up areas of Accrington, Church, Clayton-le-Moors and Huncoat. At a strategic level, the road would also provide the main access point for housing development on the former Huncoat Colliery and for major employment development at the former Huncoat power station site. The County Council will work with Hyndburn Borough Council and developers to develop a funding package to deliver this link road.

Taking Our Vision Further

The work done so far in the masterplanning process has shown us that, despite the work that we are already doing, there will still be unresolved issues on East Lancashire's highways and transport networks.

These issues fall into a number of themes:

- Rail connectivity limited by the speed, frequency and rolling stock quality of trains in East Lancashire
- Major motorway gateways with limited capacity
- Key corridors not able to support highway and public transport demand.
- Bus and rail stations not necessarily fit for modern uses
- Public transport provision for employment and in the rural area
- Limited cycling networks
- Limited interchange between public transport and cycling
- Neighbourhoods and the links between them need to be good enough standard to make travel easy for everyone.

These themes provide the basis for the further work that we are presenting in this masterplan. They are grouped into 3 strands:

Connecting East Lancashire looks at how East Lancashire connects to other areas, particularly to the rest of the county and neighbouring growth areas, to make sure that its people, economy and housing markets are more fully integrated to areas of opportunity.

Key to this connectivity will be the rail network. This will need to provide the enhanced connectivity and service standards that will support East Lancashire's people and businesses in the future.

The main motorway gateways provided by the M65 and the M66 will also need to be able to cope with the demands placed on them.

Travel in East Lancashire is about the links between East Lancashire's towns and the major employment and housing locations. Economically, these are the connections that ensure that most people and businesses can link into the wider highways and transport networks.

Congestion on key corridors has significant impacts on travel of all kinds, but particularly on commuting, on businesses and on public transport. We therefore need to ensure that the key corridors can cope with the traffic that wants to use them.

As well as improving public transport reliability, we also need to do what we can to enhance public transport connectivity within East Lancashire to make bus travel an attractive and viable option where possible, particularly for journeys to employment and education.

Local Travel takes up the challenge of ensuring that everyone, regardless of their background or where they live, can get to the services and opportunities that they need, from education and employment, to leisure and health.

Making our cycling and walking networks attractive is key to this. Part of this is making sure that we look after the highways and transport assets we have already – the roads and footways, the lights and signs and all the other things that help our networks function.

But the best road, bus and cycle networks serve no purpose if people can't or don't want to access them. We need to make it easy to change between modes of travel, so that whether travelling short or long distances, we can reduce reliance on the private car as much as possible for everyone. There is also a strong economic argument for making sure that travel to work is cheap and easy.

These strands are not independent of each other. Easy local travel, by walking and cycling, needs to feed into the bus and rail networks for longer journeys. The bus and rail networks themselves need to interlink properly both for journeys in East Lancashire and to the wider area. And no matter how far from East Lancashire people and goods are going, the connections to strategic road and rail networks must work to facilitate national and international travel.

Running through all 3 strands is the need for transport to support transformational economic growth across East Lancashire. From the largest to the smallest investment that results from this masterplan, from strategic rail interventions down to local footpaths, East Lancashire's transport networks must be made fit for 21st century purpose.



Taking Our Vision Further ~ Connecting East Lancashire

How we connect East Lancashire to the rest of the county and to opportunities further afield. The issues:

- Rail connectivity limited by the speed, frequency and rolling stock quality of trains in East Lancashire
- Major motorway gateways with limited capacity

Rail Connections

Major investment in the rail links that serve East Lancashire are already planned that will address two of the issues highlighted in this masterplan.

- The reinstatement of the Todmorden West Curve will allow a new train service, from December 2014, that will provide an hourly service between Manchester and Blackburn via Todmorden, Burnley and Accrington 7 days a week.
- The selective double tracking of the railway line between Bolton and Blackburn will allow improvements to the standard and frequency of rail services on the line. This will improve connectivity between the Ribble Valley, Blackburn and Manchester.

However, there are still fundamental problems with the network that need to be addressed, as the rail network has the potential to contribute far more to a transformational change in East Lancashire's economic fortunes.

The 'Roses' line links Preston, Blackburn, Accrington and Burnley with Bradford and Leeds via Hebden Bridge. It is a twin track railway with a regular hourly service with limited stops between Blackpool North and York. It also has a regular hourly service that stops at all stations between Blackpool South and Colne and is supported by a Community Rail Partnership. Both services are currently operated by Northern Rail.

Journey times are slow, typically around 70 minutes for the journey from Burnley to Leeds via Bradford and a similar time for the journey between Colne and Preston. Capacity on the Roses line is constrained by the mix of traffic and stopping patterns, although freight traffic on the route east of Blackburn is currently very limited.

Colne is relatively isolated. The branch from Gannow Junction at Rose Grove to Colne is single track, and this, combined with the single line branch between Kirkham and Blackpool South, reduces timetable reliability and flexibility for the Blackpool South to Colne service. The performance of this service continues to be an issue.

Links to Greater Manchester are set to become increasingly more important, particularly to the airport, which is the North of England's primary international hub. Even with the reinstatement of the Todmorden West Curve, the Colne branch will have no direct service to Manchester. However, whilst Pendle will have no direct access to Manchester, Rossendale has no direct access to the mainline network, with only a heritage rail service running from Rawtenstall to Bury and Heywood.

What we will do next:

To examine possible solutions to these issues in depth, we are going to commission a Rail Connectivity Study. This will focus in particular on the importance of enhanced connectivity between East Lancashire and the growth areas of Preston and Central Lancashire, Manchester (including Manchester Airport) and Leeds.

Where the evidence then shows that rail investment will deliver this transformational economic benefit, the study will look at how the existing network and the services that run on it can be improved and whether potential exists to expand the network.

- There is a long standing aspiration, which has considerable local support, to reopen the railway line between Colne and Skipton. Passenger services on the line stopped in January 1970 and the track was removed. However, the track bed remains more or less intact and could potentially be reinstated.

Colne is served by one train an hour which runs on the East Lancashire Line to Preston and Blackpool South. Skipton, on the other hand, is on the Airedale Line and is served by frequent electric trains that reach Leeds in around 40 minutes. The missing link could therefore give a faster connection between East Lancashire and Leeds.

The Lancashire and Cumbria Route Utilisation Strategy (2008) recognised this stretch of railway and stated in a scenario of high mode-shift from road to rail, additional sources of investment funds could become available, in which case the route between Colne and Skipton could be a candidate for addition to the network. As long as doing so is affordable, the alignment should be protected for future railway use.¹

A group of local stakeholders (Skipton-East Lancashire Rail Action Partnership) has raised the profile of this potential reopening and has recently procured consultants to develop a business case.

- There are also aspirations to develop a commuter rail link between Rawtenstall in Rossendale and Manchester using the railway line currently leased and operated by the East Lancashire Railway.

Rossendale Borough Council would like to see the line re-opened to commuter journeys towards the end of the life of Rossendale's Core Strategy (2026). Their scheme would include provision for 'Park and Ride' facilities to encourage people to leave their car. Improved walking and bus interchange would also be pursued.

Most studies to date have concluded that challenging issues would need resolving to enable regular main line and heritage services to operate on the same infrastructure and that such an initiative could be very poor value for money.

Whatever the study suggests, we will need to work closely with Network Rail to influence their strategy and ensure the best outcome for East Lancashire.

Motorway Gateways

East Lancashire is served by 2 motorways. The M65 provides links westward to the M6 and M61. The M66 runs south to link with the M60 and M62. The M66 is connected to the M65 by the A56.

At the moment, there are congestion problems in Colne caused by the abrupt ending of the M65 just to the west, whilst the M66 has severe congestion, particularly in the peak hours. In the future, the growth anticipated in East Lancashire will put more strain on both motorways, particularly on the mainly 2 lane section of the M65 from the M61 to Whitebirk.

The first of these problems is addressed in the TfL Major Schemes Programme, which includes the A56 Colne-Foulridge Bypass, which will resolve the bottleneck at the western end of the M65 at Colne.

However, solutions to the other problems are complicated by the fact that it is the Highways Agency (HA) that is responsible for the M65 from the M61 to junction X at Burnley and for the A56 and M66. Other than the terminal junction where the M66 becomes the A56, the M66 is in Greater Manchester. Working in partnership will therefore be key to finding solutions to current and future problems.

The M66 Gateway

The M66 itself currently suffers from very severe congestion during the peak hours, with the congestion spreading to more of the day. This impacts on travel to Greater Manchester, making journeys, especially commuting, slow and difficult.

It also has a significant impact on the X43 (Witch Way) and X40/41 (Lancashire Way) bus services that use the motorway.

The X43 Witch Way, which runs from Nelson via Burnley, Rawtenstall and Prestwich to Manchester, is one of the highest quality services in the country, with purpose built luxury buses and is very popular with commuters. The X40/41 Lancashire Way is an express service that runs from Blackburn via Accrington, Baxenden, Haslingden, Helmshore and Prestwich and on into Manchester.

These services are already vital, as Rossendale currently has no station on the national rail network and is remote from it, so the bus provides the only public transport link to Manchester. But the need to link to the increasing economic opportunities that Greater Manchester offers will make public transport even more important in the future.

Since reliability, punctuality and good journey times are all critical to a successful bus service, congestion issues on the routes need resolving. We have already put in place the Nelson to Rawtenstall Bus Corridor Study to improve journey times and reliability for the X43 between Nelson and Rawtenstall, so we now need to look at how we can work with our partners to resolve the remaining congestion issues, principally on the M66.

What we will do next:

We will build on the work done so far and produce an A56/M66 Rawtenstall to Manchester Gateway Study. This will look at the A56/M66 corridor and how congestion can be reduced and bus reliability improved. Most importantly, it will not restrict itself to the roads that Lancashire is responsible for, but will extend to HA roads.

The study will allow us to work closely with the HA in developing management strategies for the corridor. It will also complement the Rail Connectivity Study that will include consideration of the economic benefits of a commuter rail link between Rawtenstall and Manchester. Any such link will take a number of years to come into service and the problems on the M66 corridor require a more immediate solution.

The M65 Gateway

As we have demonstrated, the M65 plays an essential role in the economy of East Lancashire, connecting people and businesses internally as well as providing the primary means of access to Central Lancashire and the M6, particularly for freight.

From the strategic development site at Cuerden at one end of the M65 to the West Craven Employment Zone at the other, the M65 provides a key link for the Arc of Innovation. Many future employment opportunities and priorities will continue to be along this corridor, including at Guide (Junction 5), Whitebirk (Junction 6), Clayton-le-Moors (Junction 7), Burnley Bridge (Junction 9), and Pendle Gateway (Junction 12/13).

Unlike many motorways, the M65 is not 3 lanes throughout its length, with reduced capacity on some sections, particularly between the M61 and Whitebirk. Volumes on the M65 have consistently grown by about 4% per annum since its opening in 1997 and evidence now suggests that the current level of demand at peak times is causing congestion, with some junctions along the motorway at or near capacity and congestion on surrounding roads that link to the motorway.

Work to upgrade junction 4 is in the TfL development programme. Work is also planned on Haslingden Road in Blackburn, where corridor improvements will see the road widened, mini roundabouts upgraded and improvements to signalised junctions.

However, current capacity issues mean that the A6119/A677 route to the north of Blackburn, between the A59 at Samlesbury and Whitebirk, currently provides a second crucial link to the Enterprise Zone and the M6, both for Blackburn and for the wider East Lancashire area.

As traffic continues to grow, however, the section of the M65 between the M61 and Whitebirk is likely to become a bottleneck, with congestion forcing more traffic onto alternative routes and making the M65 even less suitable as a major gateway to East Lancashire.

What we will do next:

To find out what else we can do to ensure that the M65 gateway operates effectively, we will produce a Samlesbury/Cuerden/Whitebirk Growth Triangle Study that will include the main routes between these 3 key economic growth locations.

The Growth Triangle study will focus on those junctions on the M65 and on the A6119/A677 that may need to be improved and on other highway works that may be needed to ensure the capacity, reliability and safety of the network in the area.

The study will also consider how we can best increase capacity on the M65 between the M61 and Whitebirk and work with the Highway Agency who will shortly start their own strategic route assessments across the North West.

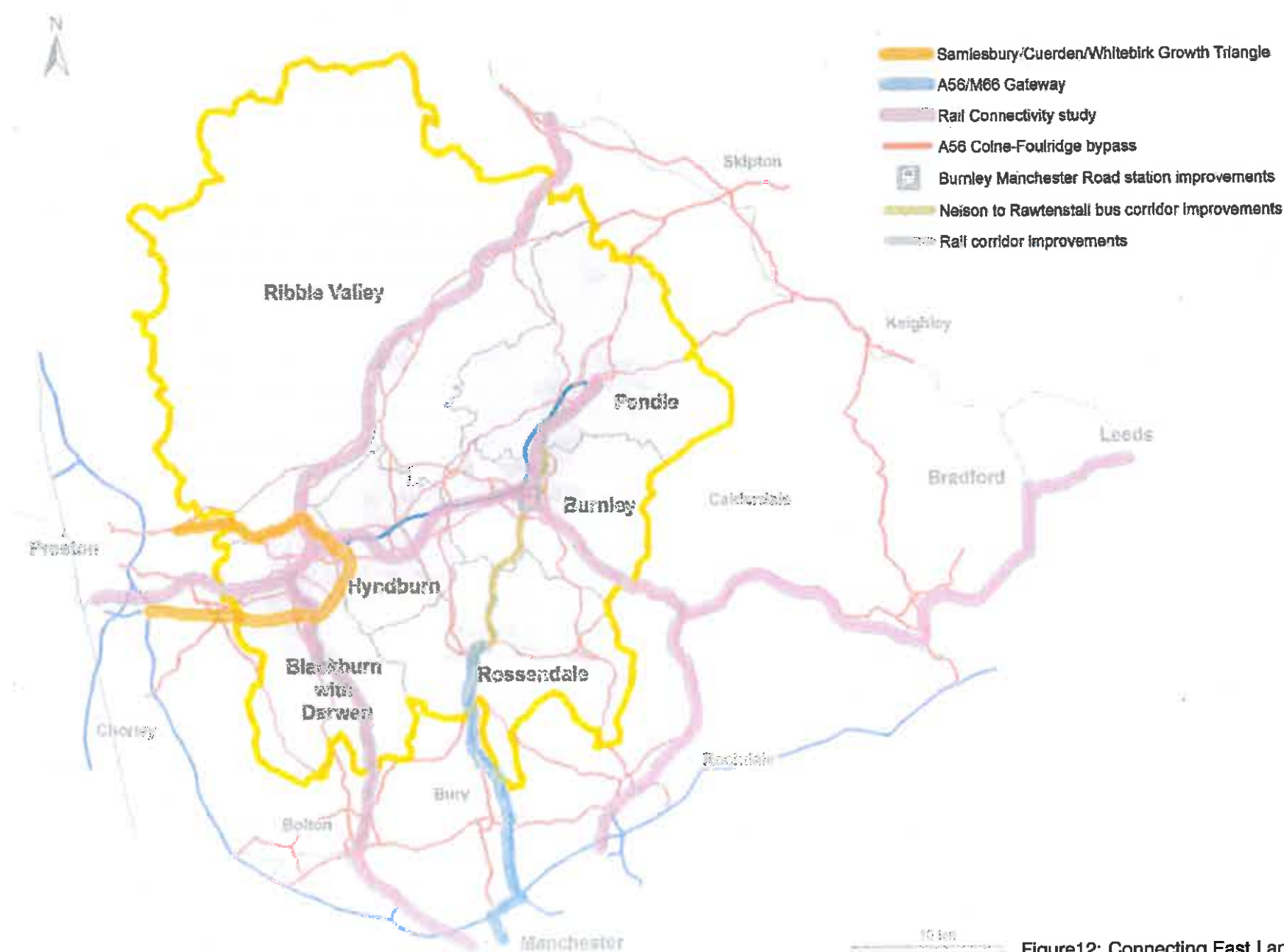


Figure12: Connecting East Lancashire

Taking Our Vision Further ~ Travel in East Lancashire

The links between East Lancashire's towns and the major employment and housing locations. The issues:

- Key corridors not able to support highway and public transport demand.
- Bus and rail stations not necessarily fit for modern uses
- Public transport provision for employment and in the rural area

Key Corridors

The A56 and A59 provide the main links to the motorways for much of East Lancashire. These two roads, together with the major routes that connect them to each other and to the M65, are East Lancashire's key highway corridors. They provide the main arteries for all types of road transport, from the largest HGVs, through buses down to bicycles and pedestrians.

Keeping these key corridors functioning as well as possible is vital to East Lancashire's aspirations. Over the years, improvements have been made where needed and maintenance has always been a high priority.

However, the situation in East Lancashire is changing as economic development takes place and it is therefore appropriate to revisit these corridors to see what may need to be done to support growth in the light of works that area already planned.

The M65/A56 Corridor

The strategic importance of the M65 and its role as the gateway to East Lancashire has been discussed. However, a strategic link is of no use if local traffic can't link to it easily. Since the Samlesbury/Cuerden/Whitebirk Growth Triangle Study will look at issues from Whitebirk to the M61, the M65/A65 corridor is defined here as the broad corridor that runs from Whitebirk to the West Craven Development Zone.

The M65 itself has few problems until it reaches its terminus at Colne, where its current abrupt finish causes congestion and leaves traffic struggling to get down local roads to reach destinations further east.

However, the A56 Colne-Foulridge Bypass, which is detailed in Appendix 1 and which is in development as part of the TfL Major Schemes Programme, will do much to resolve this problem. Only traffic heading for the A6068 will still pass through Colne.

At junctions, however, congestion can be an issue on the surrounding roads. At junction 10 (Gannow Top) we are installing traffic signals to improve the flow of traffic, but other junctions also have problems now and problems will increase in the future.

There are also problems on roads that link existing and future development sites to the motorway. For some sites, such as Huncoat, dedicated infrastructure is already planned, which will be funded by developers, whilst at Burnley Bridge, that infrastructure is being put in place now. However, we need to be sure that we do all we can to make access to development sites from the motorway as easy as possible.

Not all highway problems are congestion however, as the high volumes of traffic, particularly HGVs, can lead to other problems. Work is currently included in the TfL Major Schemes Programme to repair the Centenary Viaduct that carries the A682 through the centre of Burnley. This is a critical part of Burnley town centre's road network and without it, effective movement through Burnley would be impossible.

What we will do next:

The Burnley/Pendle Growth Corridor Study will look at what needs to be done to ensure that our highways can support the economic growth planned for Burnley and Pendle.

Starting at junction 8, the corridor continues along the M65 to junction 13 where the motorway will terminate under plans for the A56 Colne-Foulridge Bypass. As well as looking at how the motorway's junctions function now and in the future, the corridor will connect the principal existing and future strategic employment sites with the M65.

To make the most of the opportunities offered by the bypass, the study will also look at the A56 to the north of Foulridge to ensure that the West Craven Development Zone is adequately served.

The A59 Corridor

The A59 is a former trunk road that runs generally in a north-easterly direction from the M6 at Junction 31 near Samlesbury through the Ribble Valley to Whalley and Clitheroe, before crossing into North Yorkshire, where it is joined by the A56 to the west of Skipton.

In Lancashire, the A59 has been improved considerably over the last 40 years, and for much of its length is a high standard single carriageway road with the effects of long inclines relieved by climbing lanes. Apart from Copster Green and Gisburn, all communities along the route have bypasses.

Although the A59 does not carry a significant volume of through traffic, it retains an important role in linking the scattered communities of the Ribble Valley, including Clitheroe, to the motorway network. The Enterprise Zone site at Samlesbury lies at the far south-western end of the route.

What we will do next:

The Ribble Valley Growth Corridor Study will include the A59 between Samlesbury and North Yorkshire boundary and also the A671/A6068 route between Whalley and M65 J8. The study will look at how these important roads can be made to function as effectively as possible for cars, freight and for other users.

The study will identify where junctions may need to be improved or where other highway works may be needed to ensure that capacity, reliability and safety issues do not hinder economic growth.

Public Transport

The highways and transport networks that serve East Lancashire grew out of the industrial development of the 19th and 20th centuries. As the economy of the area has changed, those networks haven't always kept up with the changes.

Historically, the labour market was always very local, with the majority of people working within a short distance of their home. Whilst most commute times are currently under 15 minutes in most districts, recent survey data shows that the majority of people would be prepared to travel further than they do now, with most prepared to travel for at least half an hour. This makes it even more important that connections within East Lancashire allow these longer journeys and take full advantage of strategic improvements.

However, encouraging more car use is not an option. Not only is this expensive for individuals, but it is not environmentally sustainable. We therefore need to make sure that public transport services can support increased commuting and that public transport infrastructure is fit for purpose.

We are already taking some steps to improve our public transport in East Lancashire:

- The major redevelopment of Burnley Manchester Road rail station
- New bus stations are planned for Accrington and Rawtenstall
- Pennine Reach will provide a new rapid bus service in Blackburn with Darwen and Hyndburn, giving improved access to key strategic employment sites (including Whitebirk65), education, health, shopping and leisure facilities.
- Small-scale infrastructure and system improvements are being planned for the Nelson to Rawtenstall bus corridor to improve journey times and reliability, particularly for the Nelson-Manchester (X43) bus service.

In the rural areas of East Lancashire, such as the Ribble Valley, the problems are rather different. These areas are very dependent on the car, which not only leads to local problems on the highways network, but makes life very difficult for those who, for whatever reason, do not have their own transport.

This car dependence is unlikely to be sustainable in the longer term, both on cost grounds and through the need for carbon reduction.

Visitors to the more rural areas also need to be able to travel without needing a car and there is a definite need to support a sustainable visitor economy to ensure that both the natural environment and our built heritage are protected while their economic benefit is maximised.

What we will do next:

We know that there is still a lot of work to be done to make our public transport fit for purpose as East Lancashire develops. Whilst there are some long-standing issues, other problems are surfacing now.

The East Lancashire Accessibility Study will focus on travel between the main towns and employment areas, but will include travel to education and for leisure. It will also consider how public transport can best serve rural and remote areas of East Lancashire. In line with future funding requirements, the study will focus on where the greatest benefits can be achieved by enhancing accessibility.

Particular questions to be answered by the study currently include:

- How can public transport best benefit from the Colne-Foulridge bypass?
- Is there merit to a bus scheme that would provide links around Burnley and Pendle districts in a way similar to Pennine Reach and that would link into both Pennine Reach and the Witch Way?
- How can Community Transport best evolve to meet the diverse transport needs of East Lancashire?

- What benefit would improving Burnley Rose Grove rail station and the interchange with Manchester Road bring?
- Colne bus station is not considered fit for purpose and the railway station is distant to it and very basic. If rail services improved to Colne, what would be needed to support interchange?
- Are improvements needed to other major bus facilities?
- Again, if rail services are enhanced, what could be done to improve rail station viability across East Lancashire and the links to bus and cycle networks?
- Is there any need for extra rail stations?
- What is the best way for public transport to support the rural economy and the residents of and visitors to our rural areas?
- Are there alternatives to traditional public transport for rural areas?
- Similarly, how do we best serve our remote towns and villages?

These are not simple questions, particularly at a time when funding is scarce. However, the very scarcity of funding makes it all the more important that we have a clear picture of where the resources we and our partners do have can produce the most benefit.

Other questions will do doubt be raised as part of the consultation on this masterplan and as expectations of public transport go up and these will be considered using the methodology established by the study.

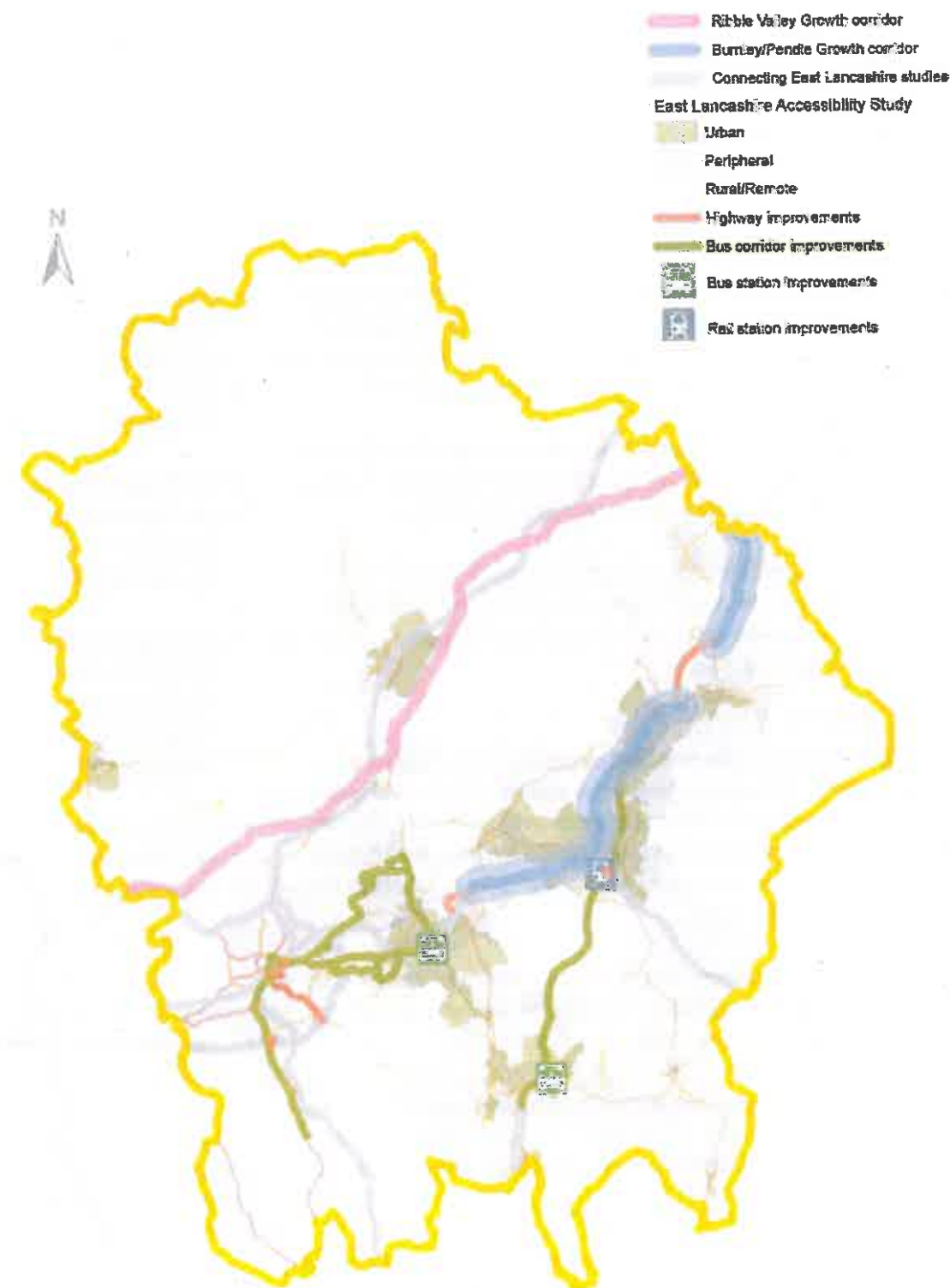


Figure 13: Travel in East Lancashire

Taking Our Vision Further ~ Local Travel

Making sure that everyone can get to services and opportunities. The issues:

- Limited cycling networks
- Limited interchange between public transport and cycling
- Neighbourhoods and the links between them need to be good enough standard to make travel easy for everyone.

Cycling

Local travel and short journeys are a vital component of any transport network. Cycling in particular has the potential to offer options for the short journeys but also for longer journeys to work and education and for leisure.

In general, cycling is an option for journey times of less than 30 minutes. The geography and weather of East Lancashire may not make cycling such an obvious choice as in flatter, drier areas, but cycling is cheap and convenient. There is also the advantage that the facilities provided for commuters to cycle will be used by leisure cyclists looking to improve their health.

Although there is a lot of work being done to improve and extend cycling facilities, the cycling network in East Lancashire is far from complete and does not provide adequate links between housing, towns and employment. It also doesn't necessarily give good access to visitors.

Short journeys in the local community, to school, to the shops or just to enjoy being out and about, are key to local economies and to health and well-being. But beyond that, any journey involving public transport will involve local travel, even if that local travel is simply walking to the bus stop.

Public transport is likely to become ever more important in the future and linking to it will be a key consideration in both urban and rural areas. Local travel will increasingly include getting to public transport hubs and that will mean providing facilities for cyclists to store a bike or take it with them for later in the journey.

Ensuring cycle facilities at train and bus stations are easily accessible and secure will encourage more people to use a mixture of bike, bus and train to complete their journeys. However, this will not happen unless cycle storage is secure, buses and trains connect well and cyclists and their cycles are catered for on trains and buses.

What we will do next:

For cycling to become a widespread option for travel, particularly for commuting, we need to make sure that there is a good cycle network across East Lancashire.

The East Lancashire Strategic Cycle Network will be that network. However, one of the first priorities will be to establish just what a 'good' cycle network is. Different cyclists have very different needs, from enthusiasts with specialist bikes and clothing to the new cyclist with no desire to change clothes and a basic bike.

There is a lot of local knowledge that can inform the development of the network and there has already been substantial investment from a number of sources. Taking forward our ambition to have a coherent East Lancashire cycle network that can be used by all will therefore involve working with partners from both the public and private sectors.

The network will also provide some of the enhanced links to public transport that will be needed in the future. The East Lancashire Accessibility Study has already been mentioned. Interchange between cycling and public transport will form part of that study and so the output will inform the future development of the cycle network.

Potential links in this network have already been identified that would link communities to employment and would also offer potential for tourism and recreation:

- Rawtenstall to Rochdale ~ Strategic spinal route with connecting spurs providing commuter and leisure link between.
- Baxenden to Haslingden -- Missing section of National Cycle Network Route 6 (NCN 6) from, mostly along the former railway line.
- Southern section of NCN6 from Haslingden/Helmshore to Ramsbottom and Greater Manchester along former railway line.
- Great Harwood to Burnley ~ former railway, missing central section
- Huncoat Greenway connecting Huncoat, Within Grove, Peel Park and Accrington ~ missing sections

These proposals are in various stages of design and there is as yet no single funding strategy for them. However, this is far from an exhaustive list as the majority of districts in East Lancashire have cycling strategies in place which identify further potential links both in a strategic cycle network and for more local travel.

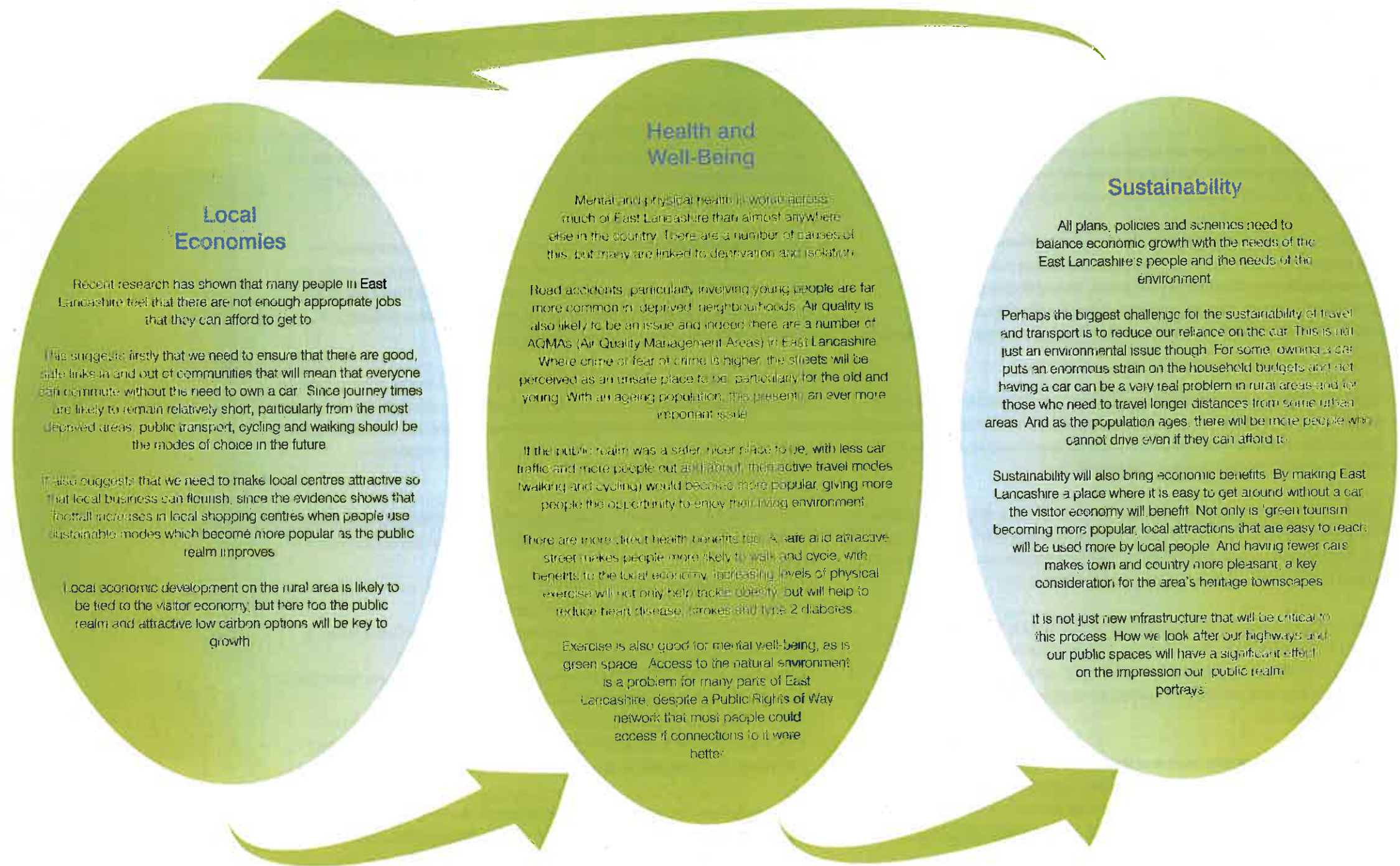


Local Links

The neighbourhoods of East Lancashire vary from the affluent in pretty rural villages to some of the most deprived in inner urban England. There are communities who are doing well and others that have effectively become stuck. In well-off areas, there are households that don't share the comparative wealth around them. Some of our towns and villages are remote from employment and services. And in rural areas, those living outside the villages can be even more isolated.

This makes for a very mixed picture of what local links need to do. So just what does facilitate those short journeys in the local community, to school, to the shops or just to enjoy being out and about, that are key to local economies and to health and well-being?

The answers will be specific to the area and will involve partners from across the public and private sector, working together to find innovative solutions.



What we will do next:

Although we know in general terms what we need to do, much of the work of identifying where we need to enhance local links will fall out of other work streams in this masterplan and from the day to day contacts we have with our partners and our communities.

Some problems we can identify; we know where road safety and air quality are local issues. In other areas, we can only identify where problems may be occurring. The accessibility study will highlight where communities may not have adequate access to the wider public transport networks.

Other research can show where residents may be 'transport poor'. However, only the communities themselves can really know where new infrastructure or our doing things differently will provide the most benefit.

Work is already going on that will provide the starting point for providing high quality local links. For instance, we and our partners are already working to:

- Maintain our roads and footways
- Improve safety for all road users
- Improve air quality
- Improve public transport
- Make connections to green space

There are also opportunities presented by projects in the masterplan and by other initiatives that are underway

We need to make sure that the maximum benefit is gained from public transport improvements such as Pennine Reach and Rawtenstall bus station. But we also need to make sure that we take full advantage of other schemes that change our highways network. As an example, the A56 Colne-Foulridge bypass will take traffic from North Valley and that gives us the opportunity to look at how we can improve links for cyclists and walkers along and across the valley.

But improving local links should also involve looking beyond what we have done in the past. The current Townscape Heritage initiatives in Bacup and Accrington are examples of what can be achieved by bringing a new view to improving our towns.

The Townscape Heritage (TH) programme is a Heritage Lottery initiative for schemes which help communities improve the built historic environment of conservation areas in need of investment across the UK for the benefit of local residents, workers and visitors. Bids for funding for both the Bacup and Accrington TH initiatives have been successful in reaching the second stage of the bid process and are now waiting for final approval of the £1.5 million allocated by the Heritage Lottery Fund to each area.

In Bacup, a successful bid will see the physical appearance of the bid area improved and vacant floor space brought back into use. The Accrington Town Centre and Pals Centenary project aims to transform the declining historic retail and commercial gateway into the town centre, along Blackburn Road, culminating in a public realm scheme outside Accrington Town Hall and Market Hall to commemorate the Accrington Pals and the Battle of the Somme.

The Local Links programme will look to replicate partner working like this, involving the public and private sector, charities and communities in improving our county's neighbourhoods.



Next Steps

This consultation masterplan represents the beginning of a programme of infrastructure delivery to serve East Lancashire over the next 13 years and beyond.

There is much to do and it will need the commitment and efforts of a variety of providers to see it through - County and District Councils, Lancashire's Local Enterprise Partnership, Highways Agency, Network Rail - and the support of private business and house builders as well.

The first task is to make sure we have widespread agreement for the highway and transport improvements that are taken forward and delivered. Then, to stand the best chance of delivery, we must get these improvements 'ready to roll' as soon as we can, so that we can take all opportunities to get funding for schemes that are ready to deliver. That will mean committing time and funding 'upfront' to working up these ideas and preparing the economic case for them.

Once we have your views on the vision, schemes and proposals put forward in this masterplan, then over the next 2 years to 2015 we will need to:

- Progress with the studies and other evidence gathering, working with our partners to ensure that we can make the case for the programme.
- Once we have that evidence, consult on and publish a final version of this masterplan.
- For schemes we are already committed to, finalise designs, begin to assemble land, and start works.
- For proposals made in this version of the masterplan, consult and work with communities, stakeholders and infrastructure providers to reach agreement on scheme specifics and secure funding for those proposals.
- Draw up and identify the proposals in more detail and protect routes
- Begin the preparation of major scheme business cases.

These improvements will affect us all. They will support and safeguard the area's economic ambitions, relieve the worst congestion, offer real choice in the way we travel, improve our health and enrich our experience in our town centres. That makes it all the more important that we listen to your ideas, incorporate the best, and achieve a broad consensus to deliver this master plan.

Delivery and funding of the masterplan will rely on a number of infrastructure providers and a variety of funding sources, and we will be working closely with these partners to make sure there is the guarantee of their support and assistance, with funding to follow.

Crucial to all this will be the support of residents and businesses. Too often attempts to deliver growth and new development have failed without the buy in and full support of the communities affected. We have the opportunity to make significant and long-term improvements, backed by substantial investment, to East Lancashire's highways and transport system.

Securing Developer Contributions

The cost of delivering the package of measures identified in this masterplan, and those that will come out of the work we propose to do, cannot be borne entirely by public sector funding. We have shown that, in areas where we can come to rely on the development industry to contribute funding to new infrastructure, we can increase investor confidence and our ability to attract other sources of funding, and in turn improve the prospects of delivery, and delivering to earlier timescales.

Moving forward, investment in major new infrastructure will, increasingly, need to demonstrate an economic justification. In practice, this means a clear strategy towards bringing forward integrated development proposals for new development and economic growth alongside the infrastructure to support it. In order to deliver on our proposals, it is vital that local authorities take every opportunity to coordinate their development planning strategies with future infrastructure investment, and pursue and pool together contributions from the development industry.

New procedures have been put in place for collecting and investing developer contributions. Whilst the Community Infrastructure Levy is yet to feature in East Lancashire, it is already proving to be a key mechanism in other parts of Lancashire to delivering major new infrastructure to stimulate and support major house building and business development.

Although market conditions are very different between the Central and East Lancashire, there are areas in East Lancashire that are, or would have the very real prospect to be, attractive areas for developers to build, new residents to live and businesses to locate to and bring jobs.

A number of these areas coincide with transport schemes supported by this masterplan, for example, along the A56 corridor north of Colne to Earby, at Huncoat. In these areas, the prospect for infrastructure delivery will be greatly enhanced in support of new opportunities for development and economic growth and local authorities are encouraged to coordinate future development activity to maximise these opportunities.

The speed and certainty with which we will be able to implement new infrastructure will be directly linked to developer contributions. For this reason it is important that local development frameworks are revisited to bring forward housing sites in locations that have the ability to generate CIL contributions.

Let us know what you think

Until 6th December 2013 there will be a public consultation on the Highways and Transport Masterplan for East Lancashire

As part of the consultation it is important that we get your views on the vision presented in the masterplan

A leaflet with a questionnaire accompanies the masterplan and this is your opportunity to let us know what you think. Copies of the leaflet are available from public libraries and council offices in Burnley, Hyndburn, Pendle, Ribbles Valley and Rossendale

The Masterplan can also be viewed or downloaded from our website. To access the documents paste the following link into your browser www.lancashire.gov.uk and then search for Local Transport Plan on the A-Z list. You can also fill in the questionnaire online

You can also write to us at

Highways and Transport Masterplan for East Lancashire
Consultation
Environment Directorate
Room C4
County Hall
Preston
Lancashire
PR1 0LD

or by email: enquiries@lancashire.gov.uk

Milestones

Project	Delivery Agency	Current Status	Key Milestones							
			2013/14	2014/15	2015/16	2016/17	2017/18	2018/19	2019/20	2020/21
Manchester Road Railway Station Upgrade, Burnley	Network Rail	Under Construction	Project Completed							
Todmorden West Curve Reinstatement	Network Rail	Committed	Project Completed							
Pennine Reach Darwen/Blackburn/Accrington	LCC/BwDBC	Programmed	Start of Works (Nov 13th)			Project Completed				
Ciltheroe to Manchester Rail Corridor Improvements (Blackburn to Bolton)	Network Rail	Programmed			Project Completed					
Haslingden Road Corridor Improvements, Blackburn	BwDBC	Programmed			Start of Works	Project Completed				
Centenary Way Viaduct Major Maintenance Scheme, Burnley	LCC	Programmed			Project Completed					
Rawtenstall Bus Station	LCC	Programmed		Project Completed						
Nelson to Rawtenstall Bus Corridor Improvements	LCC	Programmed	Start of Works	Project Completed						
A56 Colne-Foulridge Bypass	LCC	Pre-Programme		Scheme Business Case Development		Planning Application	CRD/SHO	Start of Works	Road Open	
Whinney Hill Link Road, Hyndburn	LCC	Pre-Programme				Work Preparation	Planning Application	CRD/SHO	Start of Works	Road Open
M65 Junction 4 Improvements	Highways Agency	Pre-Programme		Project Completed						
M65 Junction 5 Improvements	Highways Agency	Committed		Project Completed						
East Lancashire Connectivity Study (ELCS)	LCC	Programmed	Final Study	Study Completed						
M65 Burnley/Pendle Growth Corridor Improvements (ELCS)	LCC	Pre-Programme	Route Management Strategy	Route Management Strategy Implementation						
A59 Ribble Valley Growth Corridor Improvements (ELCS)	LCC	Pre-Programme	Route Management Strategy							
Rawtenstall to Manchester Bus Corridor Improvements (ELCS)	Highways Agency	Pre-Programme	Route Management Strategy	Route Management Strategy Implementation. Delivery will require agreements with the Highways Agency and Transport for Greater Manchester and will be subject to securing a Growth Deal.						
Overden/Whitebirk/Samlesbury Growth Triangle (ELCS)	LCC/BwDBC & Highways Agency	Pre-Programme	Part of East Lancashire Connectivity Study	Delivery will require agreement with the Highways Agency and will be subject to securing a Growth Deal.						
East Lancashire Rail Network Improvements (ELCS)	Rail Industry	Pre-Programme	Part of East Lancashire Connectivity Study							
Freckleton Street Link Road, Blackburn	BwDBC	Under Construction	Start of Works	Project Completed						

Funding All figures £m and indicative

Project	2013/14	2014/15	2015/16	2016/17	2017/18	2018/19	2019/20	2020/21	2021/22	2022/23	2023/24	2024/25	Total	
Manchester Road Railway Station Burnley	2.1												22.1	
Todmorden West Curve Reinstatement	7.5												7.5	
Pennine Reach Darwen/Blackburn/Accrington	10.8	20.6	8.3	0.2									39.9	Full Approval Decision October 2013
Clitheroe to Manchester Rail Corridor Improvements, (Blackburn to Bolton)			13.8										13.8	Transport for Lancashire Programme Entry
Haslingden Road Corridor Improvements, Blackburn			1.2	0.8									2.0	Transport for Lancashire Programme Entry
Centenary Way Viaduct Major Maintenance Scheme, Burnley			3.2										3.2	Transport for Lancashire Programme Entry
Rawtenstail Bus Station	0.2	3.3											3.5	Local Transport Plan Scheme
Nelson to Rawtenstail Bus Corridor Improvements	0.3	0.5											0.8	Local Transport Plan Scheme
A56 Colne-Foulridge Bypass		0.5	0.5	0.1	1.5	1.5	17.0	17.0	1.0				40.0	Transport for Lancashire Development Pool - delivery subject to securing growth Deal
Whinney Hill Link Road, Hyndburn				0.3	0.4	0.4	4.6	9.2	0.4				15.3	Delivery subject to securing developer funding
M65 Junction 4 Improvements		2.0											2.0	Transport for Lancashire Development Pool - delivery subject to HA approval through Growth Deal Programme
M65 Junction 5 Improvements		1.4											1.4	Full Budget Programme
East Lancashire Connectivity Study (ELCS)	0.1	0.2											0.3	Local Transport Plan Project
M65 Burnley/Pendle Growth Corridor Improvements (ELCS)	0.5	0.3	2.2										3.0	Full delivery subject to securing Growth Deal

A59 Ribble Valley Growth Corridor Improvements (ELCS)			0.5	1.5									2.0	Delivery subject to securing Growth Deal
Rawtenstall to Manchester Bus Corridor Improvements (ELCS)													tbc	Delivery subject to securing Growth Deal
Cuerden/Whitebirk/Sarnesbury Growth Triangle (ELCS)													tbc	Delivery subject to securing Growth Deal
East Lancashire Rail Network Improvements (ELCS)													tbc	Rail Industry Funding in Control Period 6
Freckleton Street Link Road, Blackburn	5.5	5.5											11.0	Assumed profile for 12 month construction period
Total	27.0	34.3	29.7	3.8	1.9	1.9	21.6	26.2	1.4	0	0	0	147.8	
Highways Agency		3.4											3.4	
European Regional Development Funding	1.15												1.15	
Developer/S106/CIL	0.5						4.6	9.2					14.3	
Local Major Transport Scheme (DTT/TfL)	10.3	20.6	17.3	0.7									48.9	
Regional Growth Fund	7.6												7.6	
Single Local Growth Fund			1.7	1.5			15.3	15.3					33.8	
Blackburn with Darwen Borough Council	5.5	5.5	5.8	0.5									17.1	
Burnley Borough Council	0.6												0.6	
Lancashire County Council	1.25	1.8	4.9	1.3	1.9	1.9	1.7	1.7	1.4				20.95	
Total	27.0	34.3	29.7	3.8	1.9	1.9	21.6	26.2	1.4	0	0	0	147.8	

