

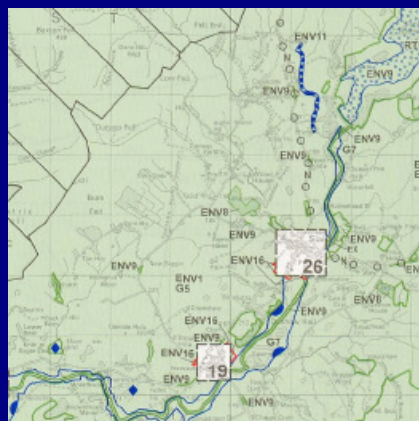
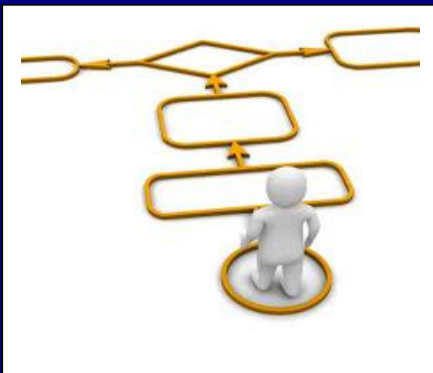
# Ribble Valley Borough Council



# Local Development Scheme

Final version

February 2011



**RibbleValley**  
Local Development Framework

**Revised Local Development Scheme timetable**  
(February 2011)

| <b>DOCUMENT</b>                             | <b>Date for issues &amp; options consultations (Regulation 25)</b> | <b>Public participation on preferred options (Regulation 27)</b> | <b>Date of submission to Secretary of State (Regulation 30)</b> | <b>Pre-Examination meeting</b> | <b>Target date for formal Examination</b> | <b>Anticipated receipt of Inspectors Report</b> | <b>Date for proposed adoption</b> |
|---|--|--|---|--------------------------------|---|---|-----------------------------------|
| <b>Core Strategy</b>                        | Published August 2010  | October 2011   | March 2012  | April 2012                     | June 2012                                 | October 2012                                    | November 2012                     |
| <b>Housing and Economic Development DPD</b> | July 2011  | March 2012   | November 2012   | February 2013                  | May 2013                                  | September 2013                                  | October 2013                      |