

FIRST SCHEDULE
TREES SPECIFIED INDIVIDUALLY*
(encircled in black on the map)

No. on Map	Description	Situation
T1	Cypress	Thorneyholme Hotel Dunsop Bridge

TREES SPECIFIED BY REFERENCES TO AN AREA*
(within a dotted black line on the map)

No. on Map	Description	Situation
None	None	None

GROUPS OF TREES*
(within a broken black line on the map)

No. on Map	Description	Situation
G1	Group of 12 trees including 1 Holly 1 Yew 10 Cypress	Thorneyholme Hotel Dunsop Bridge

WOODLANDS*
(within a continuous black line on the map)

No. on Map	Description	Situation
None	None	None

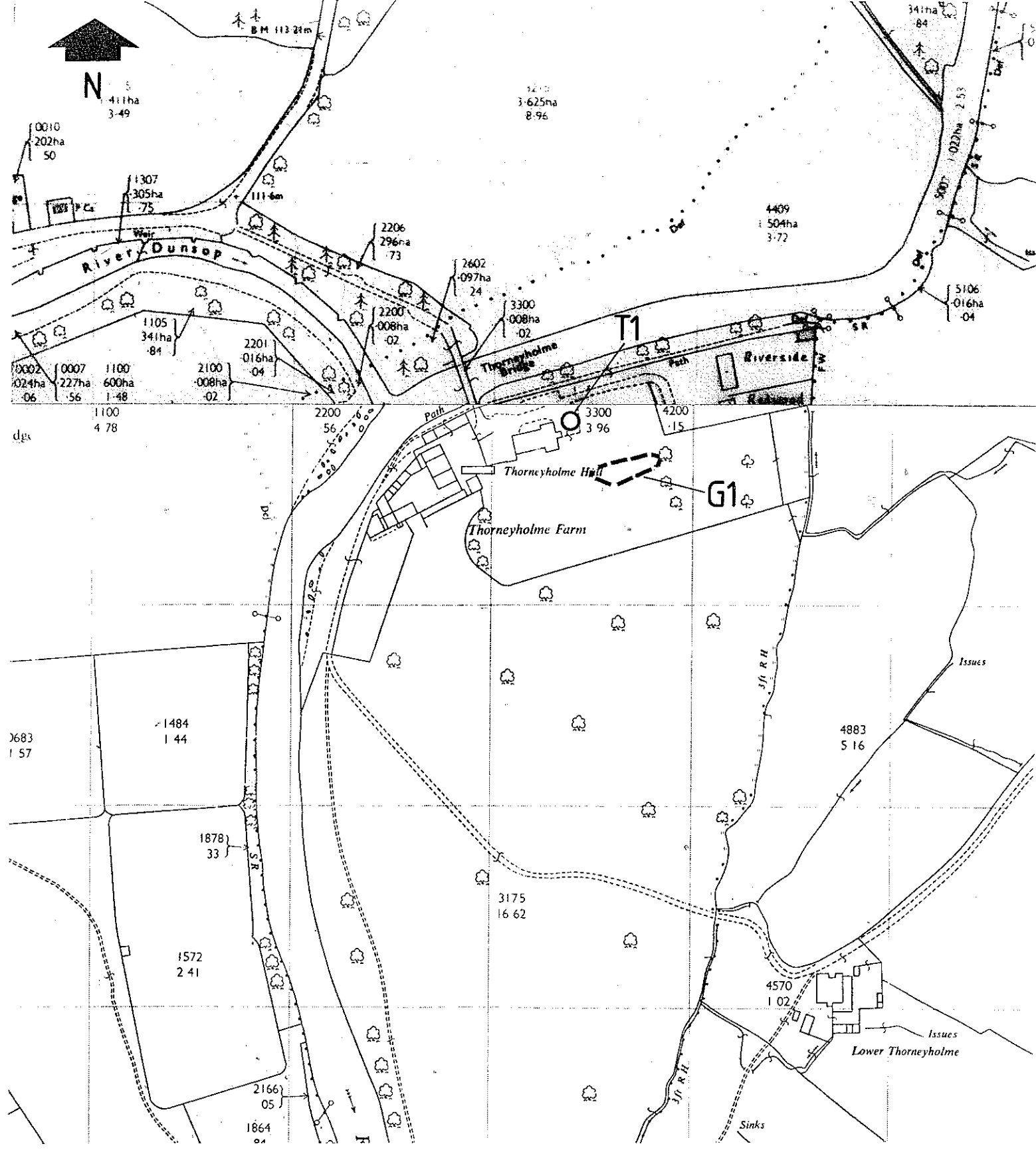
* The word "NONE" must be entered where necessary

SECOND SCHEDULE

This Order shall not apply so as to require the consent of the authority to

(3) the cutting down of any tree on land which is subject to a forestry dedication covenant where

- (a) any positive covenants on the part of the owner of the land contained in the same deed as the forestry dedication covenant and at the time of the cutting down binding on the then owner of the land are fulfilled;
- (b) the cutting down is in accordance with a plan of operations approved by the Forestry Commission under such deed.



<p>Ribble Valley Borough Council</p> <p>Tree Preservation Order 1992</p> <p>Thorneyholme Hotel</p> <p>Philip Bailey Dip Arch. Dip TP. RIBA. MRTPI AMBIM Director of Development</p> <p>Ribble Valley Borough Council, Church Walk, Clitheroe BB7 2RA (STD 0200) 25111</p>	scale
	1:2500
	drawing number
	8:95:1
reference	
DH	
date	
March '92	