

**FIRST SCHEDULE**  
**TREES SPECIFIED INDIVIDUALLY\***  
(encircled in black on the map)

No. on Map	Description	Situation
T1	Yew	Within the garden of
T2	Cherry	Smithies Bridge
T3	Oak	House, Sawley,
T4	Lime	Nr Clitheroe
T5	Lime	

**TREES SPECIFIED BY REFERENCES TO AN AREA\***  
(within a dotted black line on the map)

No. on Map	Description	Situation
None	None	None

**GROUPS OF TREES\***  
(within a broken black line on the map)

No. on Map	Description	Situation
G1	5 Common Ash 2 Lime 5 Sycamore 8 Beech 1 Oak 1 Horse Chestnut	Within the garden of Smithies Bridge House, Sawley, Nr Clitheroe

**WOODLANDS\***  
(within a continuous black line on the map)

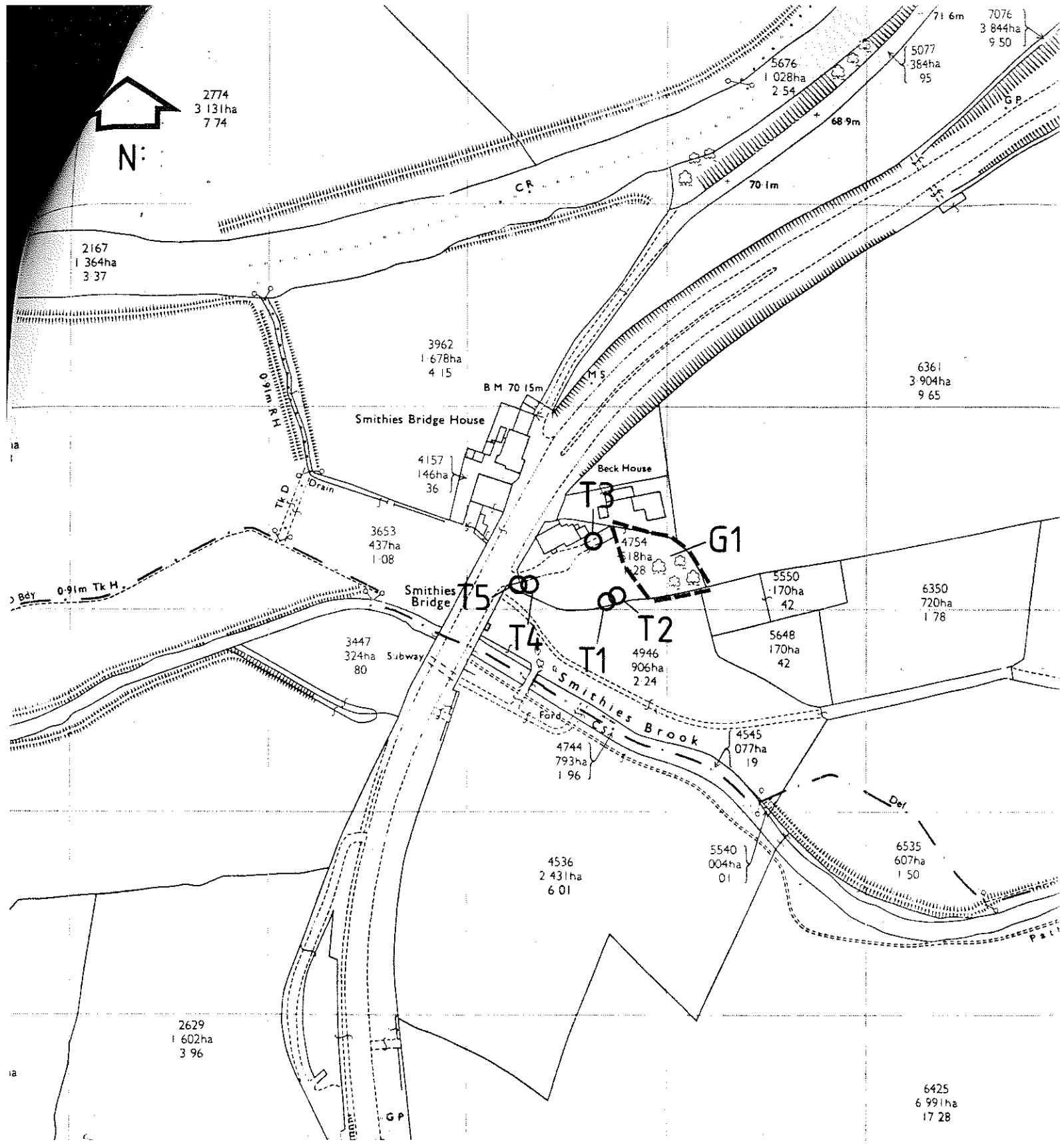
No. on Map	Description	Situation
None	None	None

\* The word "NONE" must be entered where necessary

**SECOND SCHEDULE**

This Order shall not apply so as to require the consent of the authority to

- (3) the cutting down of any tree on land which is subject to a forestry dedication covenant where
- (a) any positive covenants on the part of the owner of the land contained in the same deed as the forestry dedication covenant and at the time of the cutting down binding on the then owner of the land are fulfilled;
  - (b) the cutting down is in accordance with a plan of operations approved by the Forestry Commission under such deed.
- (4) the cutting down of any tree which is in accordance with a plan of operations approved by the Forestry Commission under a grant scheme under section 1 of the Forestry Act 1979 except a scheme which applies to a forestry dedication covenant.



Ribble Valley Borough Council Tree Preservation Order 1991 Smithies Bridge House	scale <b>1:2500</b>
	drawing number <b>8:91:1</b>
	reference <b>DH</b>
Philip Bailey Dip. Arch. Dip TP. RIBA MRTPI. AMBIM Director of Development Ribble Valley Borough Council, Church Walk, Clitheroe BB7 2RA (STD 0200) 25111	date <b>October '91</b>