

FIRST SCHEDULE
TREES SPECIFIED INDIVIDUALLY*

(encircled in black on the map)

<i>No. on Map.</i>	<i>Description.</i>	<i>Situation.</i>
--------------------	---------------------	-------------------

TREES SPECIFIED BY REFERENCES TO AN AREA*

(within a dotted black line on the map)

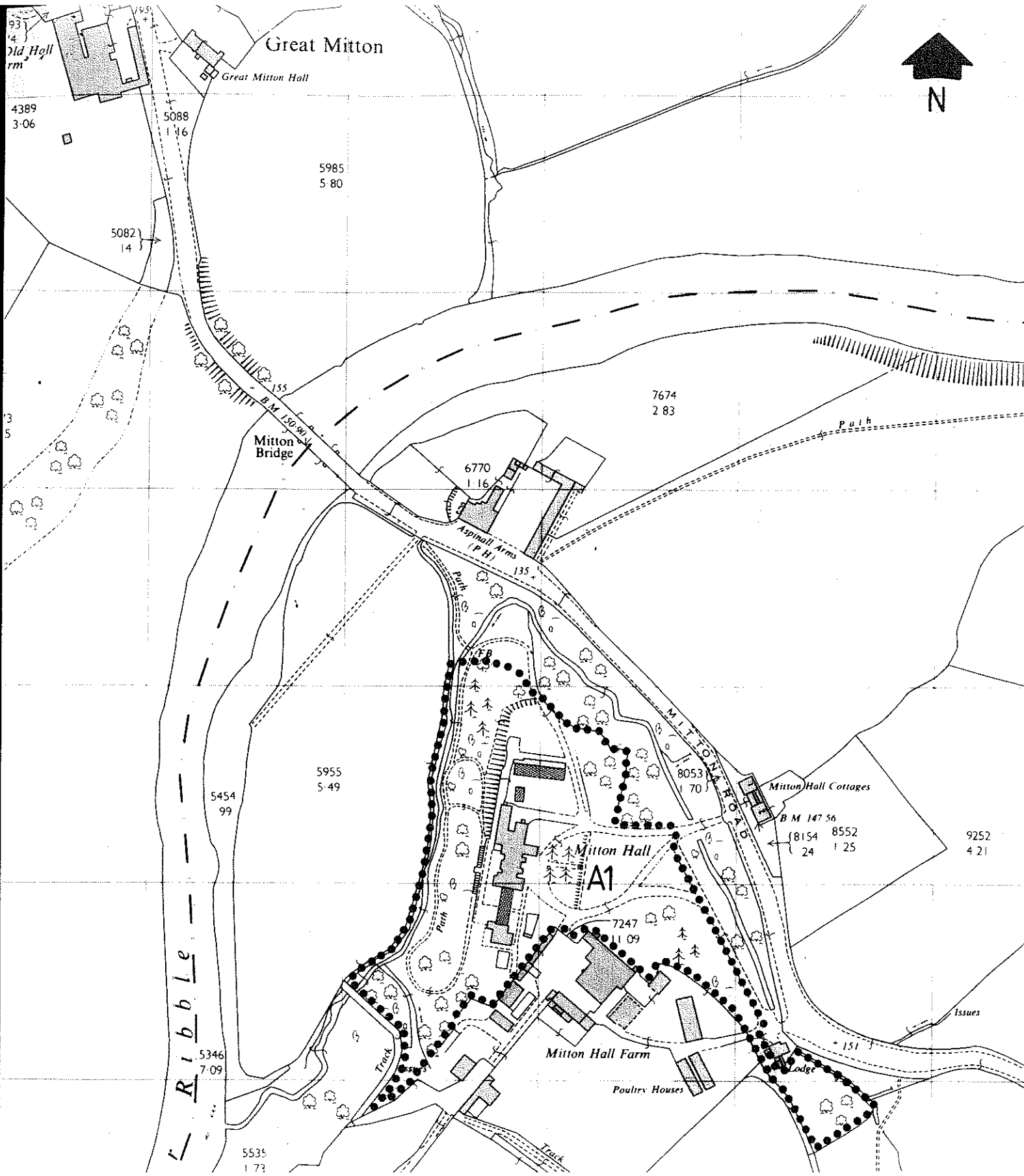
<i>No. on Map.</i>	<i>Description</i>	<i>Situation.</i>
A1	Area of trees consisting mainly of Beech Common Ash Sycamore Alder Yew Cypress Spruce Pine Holly	All trees located in area designated A1 in the order and within grounds of Mitton Hall, Mitton Road, Little Mitton.

GROUPS OF TREES*

(within a broken black line on the map)

<i>No. on Map.</i>	<i>Description.</i>	<i>Situation.</i>
--------------------	---------------------	-------------------

* The word "NONE" must be entered where necessary.



Ribble Valley Borough Council
 Tree Preservation Order 1991
 Mitton Hall, Little Mitton

11th February 1991

scale	1:2500
drawing number	8:77:1
reference	DH
date	January '91

Philip Bailey Dip. Arch. Dip. TP. RIBA MRTPI. AMBIM Director of Development & Client Services
 Ribble Valley Borough Council, Church Walk, Clitheroe BB7 2RA (STD 0200) 25111